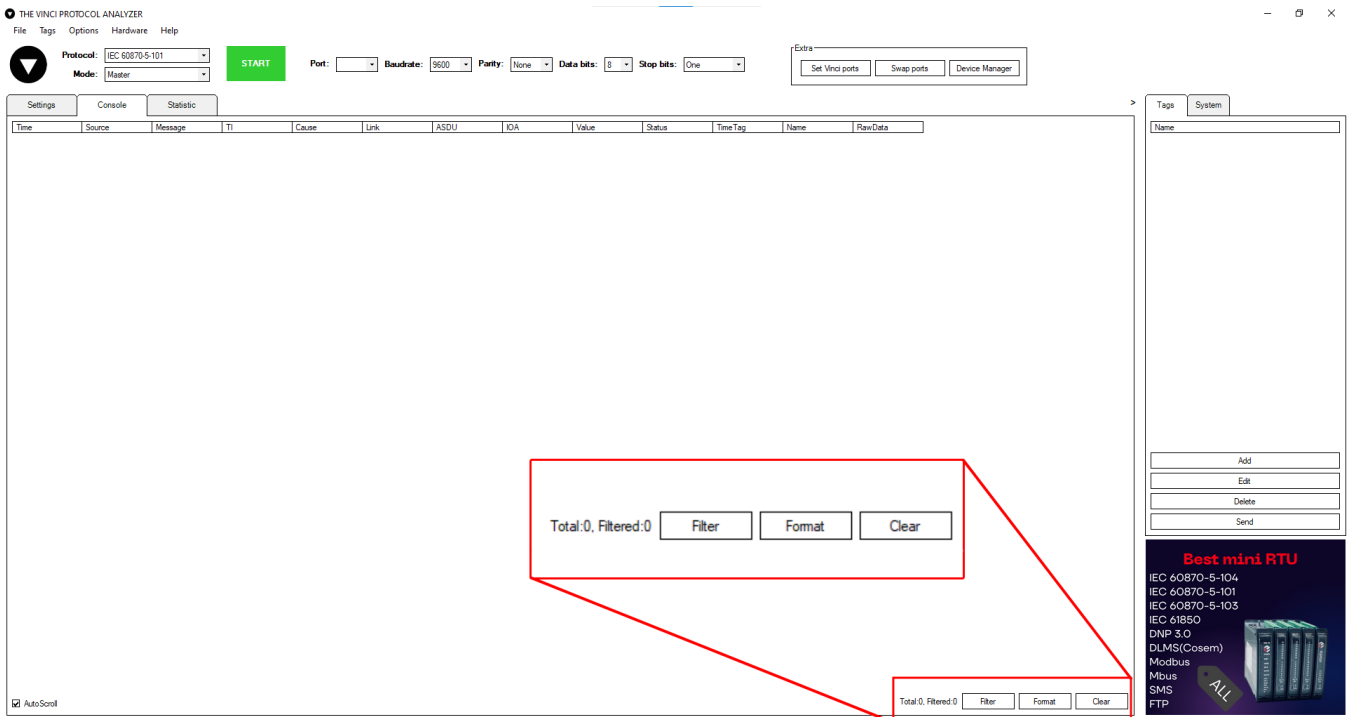


# Filter and Formatting

## Placement

Filter and Format buttons can be found at the bottom right side of the Console window, as demonstrated in the picture below



## Filter

Filtering refers to comparing a list of records against specific criteria and then hiding the records that don't match the criteria. It can be used simply to help find a record, or to create a subset of data that you can then format and copy without affecting the other records.

In the console window, you can filter the log messages by certain parameters of a protocol. To set up a filter you press the Filter button and select wanted options that are specific to the chosen protocol. The options are explained in their specific protocol page.

Only 2 main boxes are persistent through all protocols:

- Enabled - toggle if you want to enable the filter.
- Show system messages - toggle to filter out system messages. E.g. "Can't open serial port: COMx"

General

☐ Enabled
 ☐ Show system messages

IEC608705-101

☒ Show Data Layer
 ☒ Show Link Layer

ASDU

FUN

INFO

INDEX

Link

COT

TI

Save

Cancel

If the filter is enabled, the button will appear red.

Filter

Filter

## Formatting

Formatting refers to changing how data is displayed to the user. You can edit how much data is shown, what type of fields you want to see, how the date should be displayed. All the format options besides date time are specific to the chosen protocol.

Date Time pattern:

HH:mm:ss.fff

☒ Raw data

☒ Message
 ☒ Type Identification (TI)
 ☒ Cause
 ☒ Link
 ☒ Asdu

☒ Ioa
 ☒ Value
 ☒ Status
 ☒ Time Tag
 ☒ Name

Save

Cancel