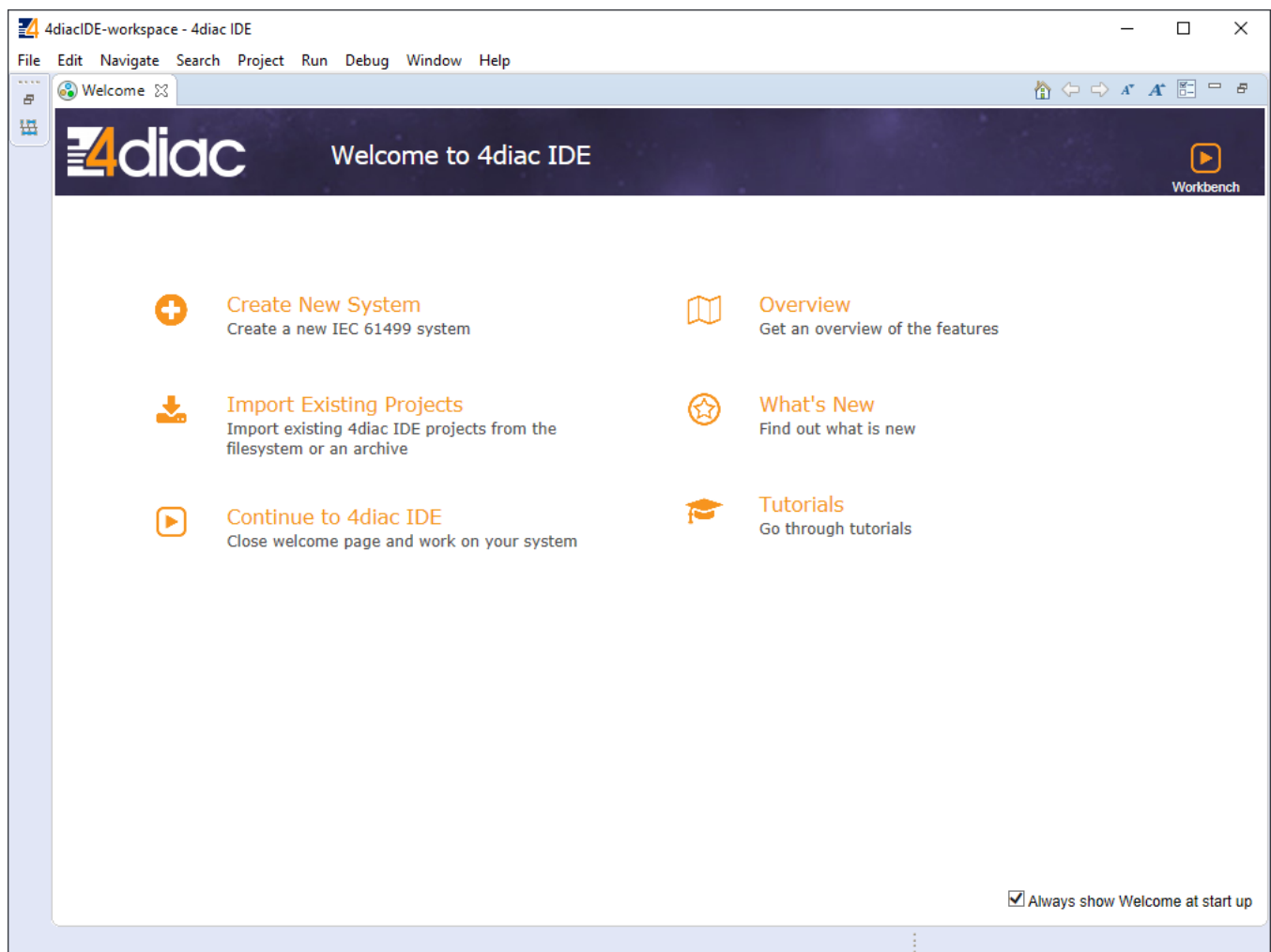
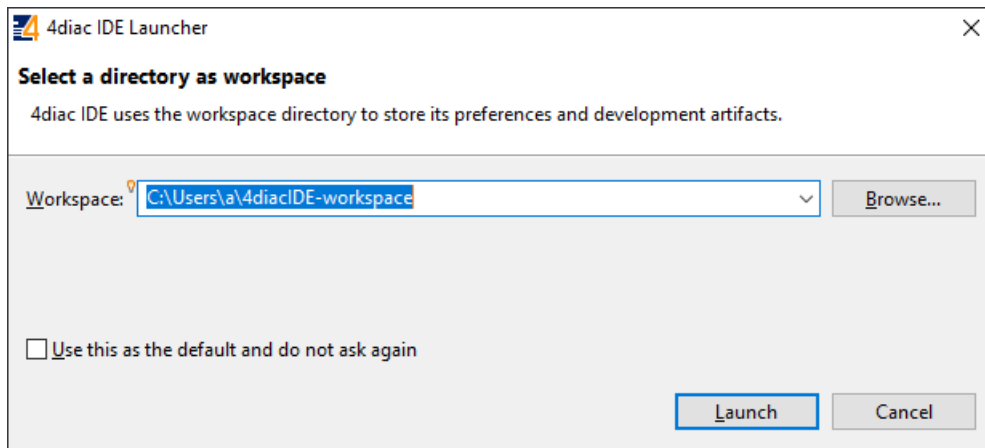


20.3 Example project

The best way to understand the basics of 4Diac and WCC Lite collaboration is through an example project. This user manual intends to show the pieces needed to run PLC applications on WCC Lite. It is not intended to be a definitive guide on how to use 4Diac IDE or how to interpret the IEC 61499 standard.

During (at least) the first start of the IDE user will be asked to select a directory for the workspace as in Figure. Workspace is used to save files needed for projects.

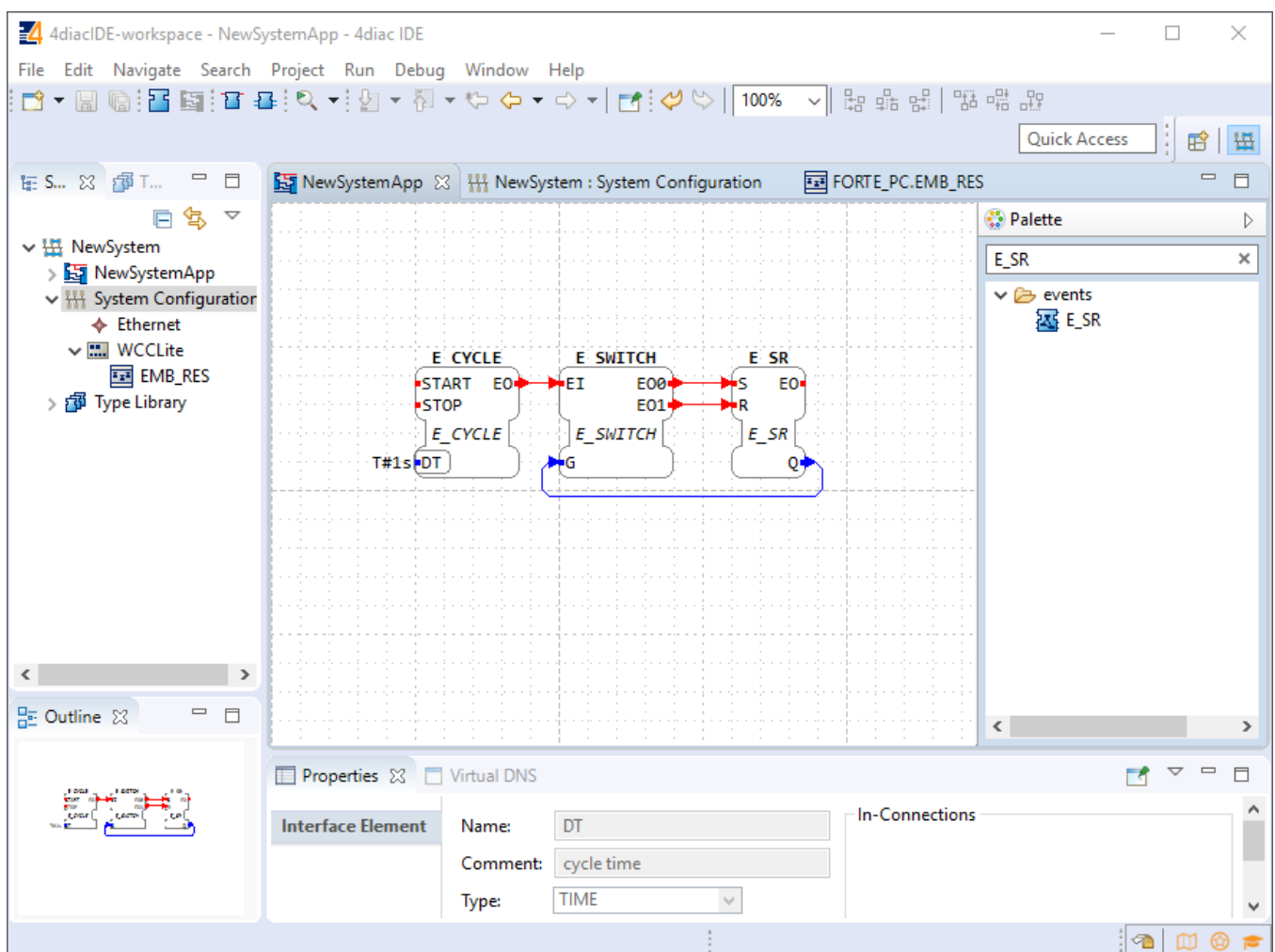
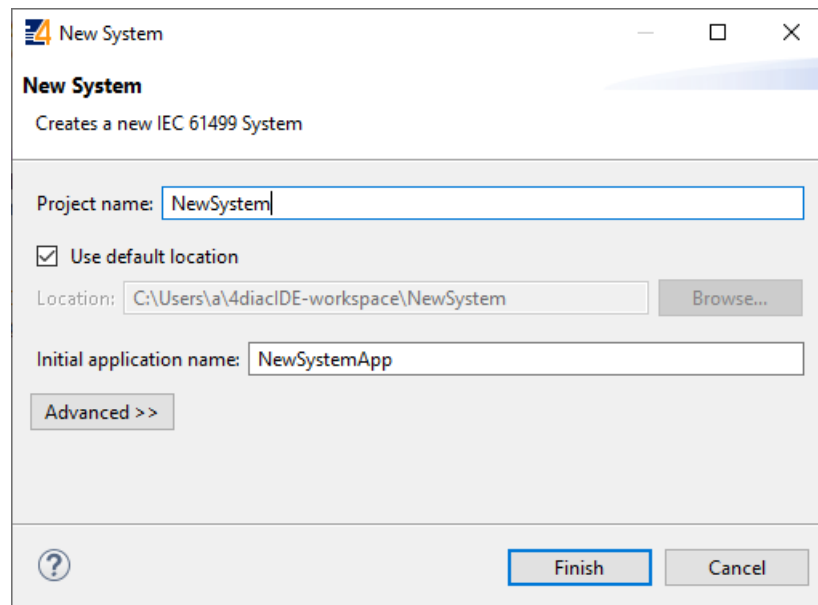


After that, a user should be met by the welcome window. If such a window is not shown, one can create a project by selecting File --> New --> Project and filling in the required fields.

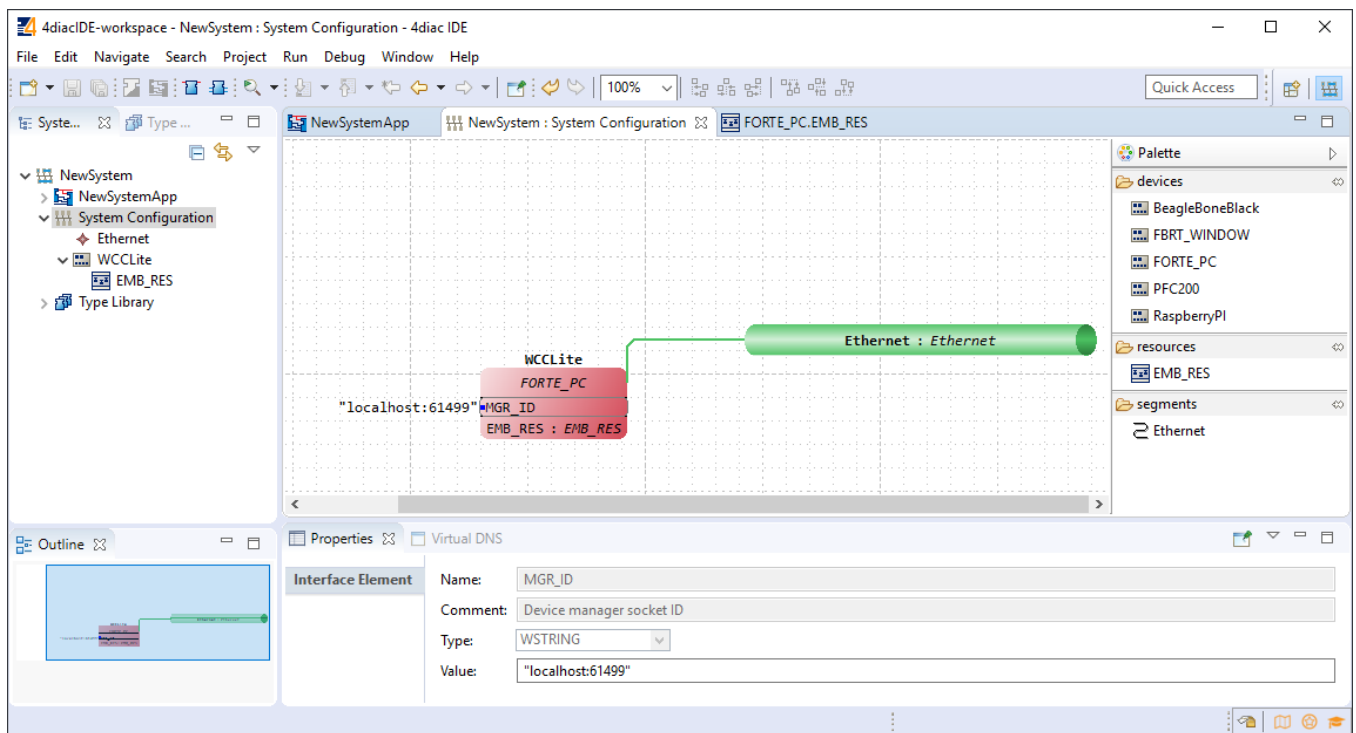
Here is a library of function blocks, which are working with the newest 4Diac version. [Elseta Library.zip](#). Upload the library to your project folder.

To create a simple application, simply drag and drop objects from the palette to the canvas and wire them accordingly. Event trigger and data pathways cannot be connected. Displayed below is an example of a simple blinker application.

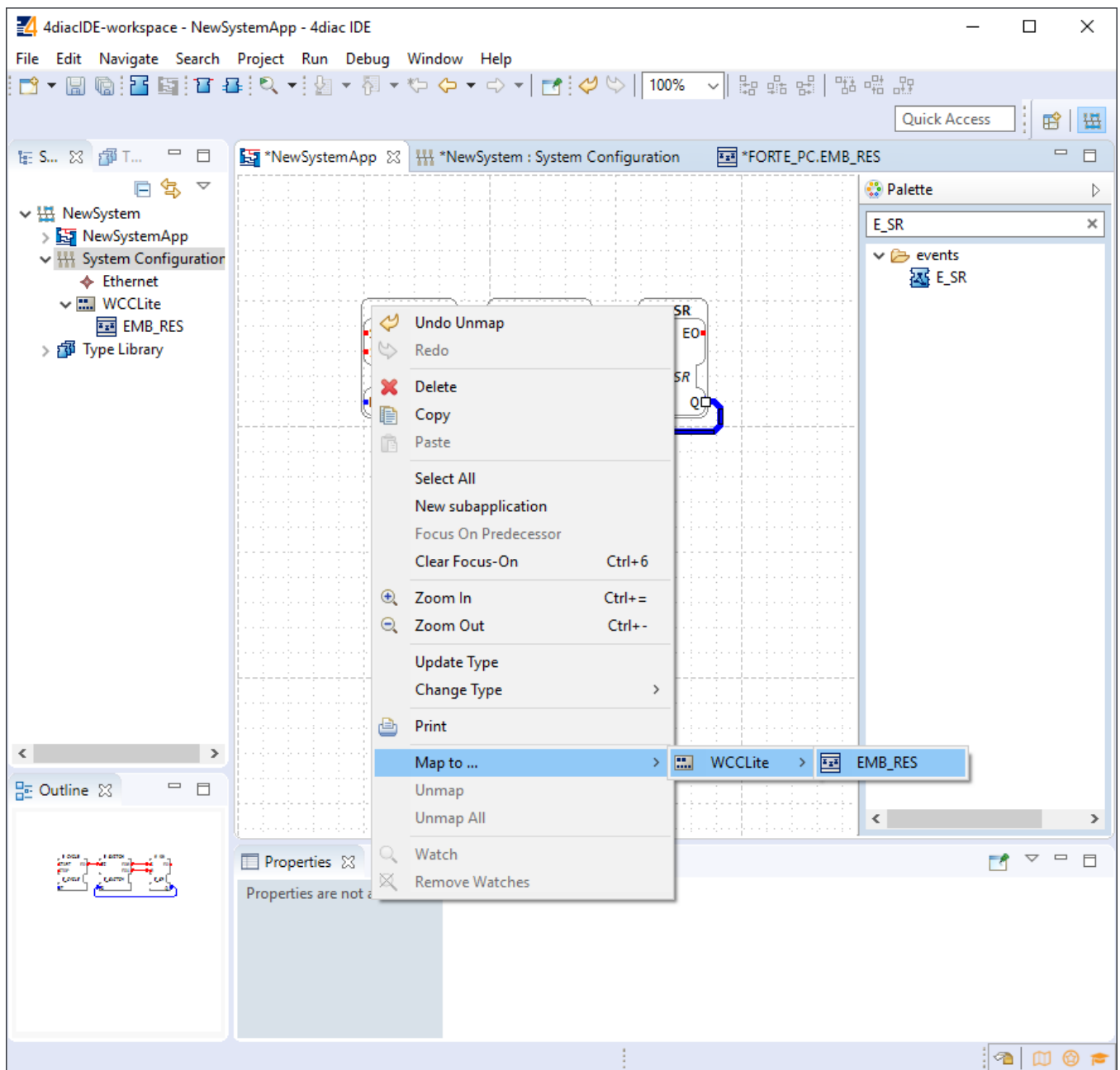
Having less wiring by connecting several signals to the same subnet as PCB designer (such as Altium Designer) as of 4Diac IDE 1.11.3 is not supported. However, if some parts are used frequently, it is highly advised to have less wiring by simply compiling several elements into a sub-application. For this, you would have to select elements to be grouped, press the right key and select New Sub application. You can later change the names of such elements and their pins.



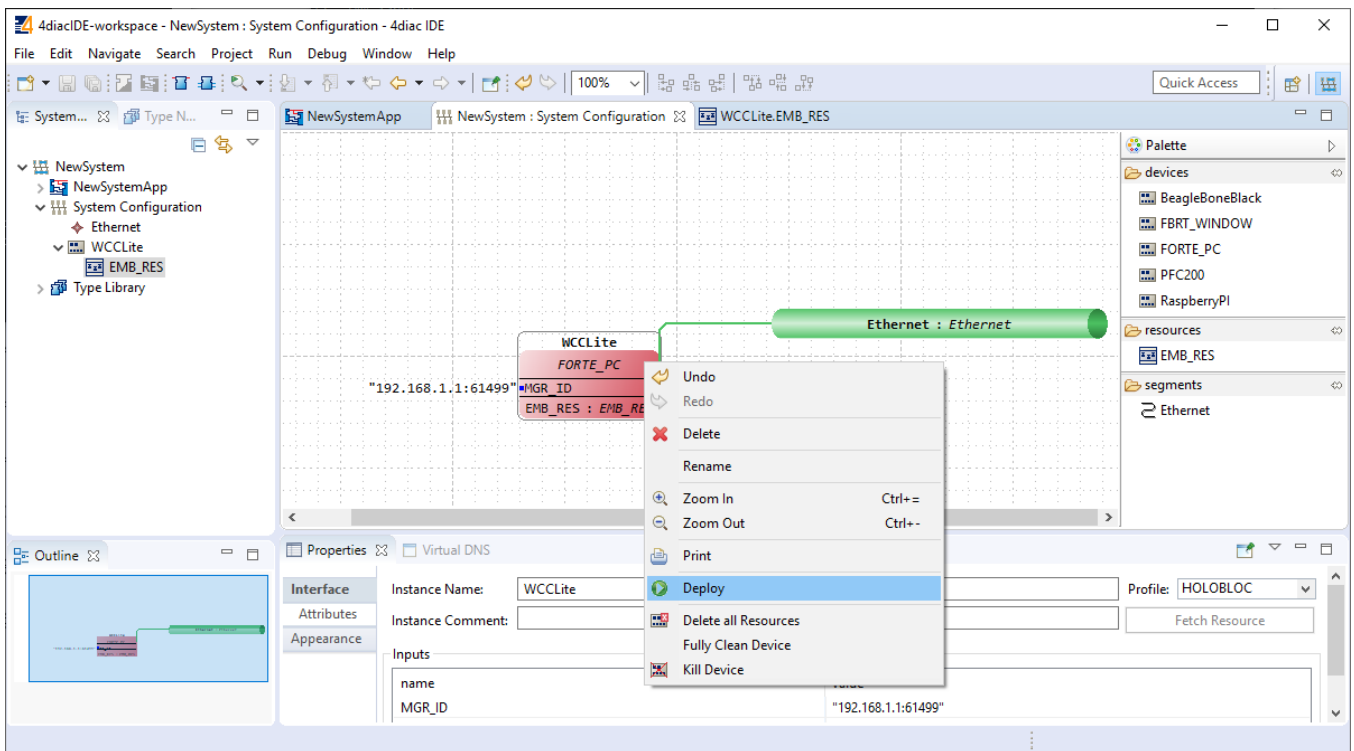
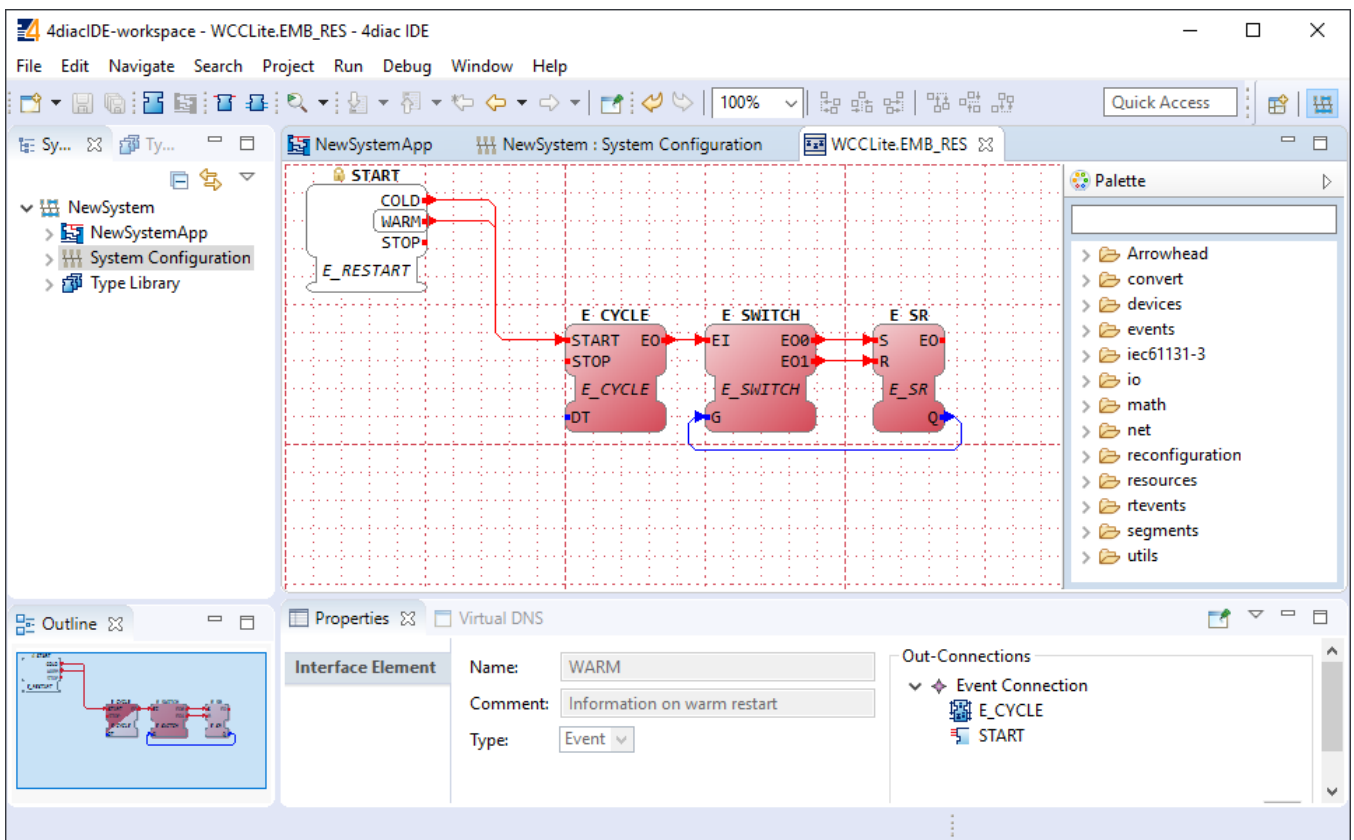
In the System Configuration section, drag and drop a FORTE_PC device, and an Ethernet segment and link them. For debugging in the local (PC) runtime, leave the address "localhost:61499". For testing on a WCC Lite, enter the IP address of the device, along with the port number (which by default is 61499 as well).



To deploy the application, the circuit needs to be mapped to the controller. For a non-distributed application (distributed application cases will not be discussed in this chapter), all the FBs of the application need to be selected and mapped to the configured controller as shown:



To start the application execution, an initial trigger needs to be present. For a non-distributed application, the initial event trigger needs to be wired from the START function block in the resource section as shown:



To deploy the application, go to the System Configuration tab and simply select "Deploy" from the right-click menu of the controller device. If a running application exists in the runtime, you may be asked whether you want to replace it. This will only overwrite the application in the memory and not the storage. If the controller is restarted, the old application will be loaded from the non-volatile memory of the controller.

🔄Revision #2

★Created 26 January 2024 13:13:05 by Gabriele

🔧Updated 17 June 2024 10:23:53 by Gabriele