

# 5 Installing the WCC Lite

- 5.1 Mounting
- 5.2 Power
- 5.3 SIM card slot
- 5.4 Dual-SIM card slot

# 5.1 Mounting

To mount the device:

1. Secure the top of the mounting clip onto a DIN rail.
2. Push the bottom of a device forward to fix the clip in place.

To dismount the device:

1. Pull the red-coloured clip downwards (found at the bottom side of the DIN rail).
2. Pull back the bottom of the device.
3. Pull the device upwards to dismount it.

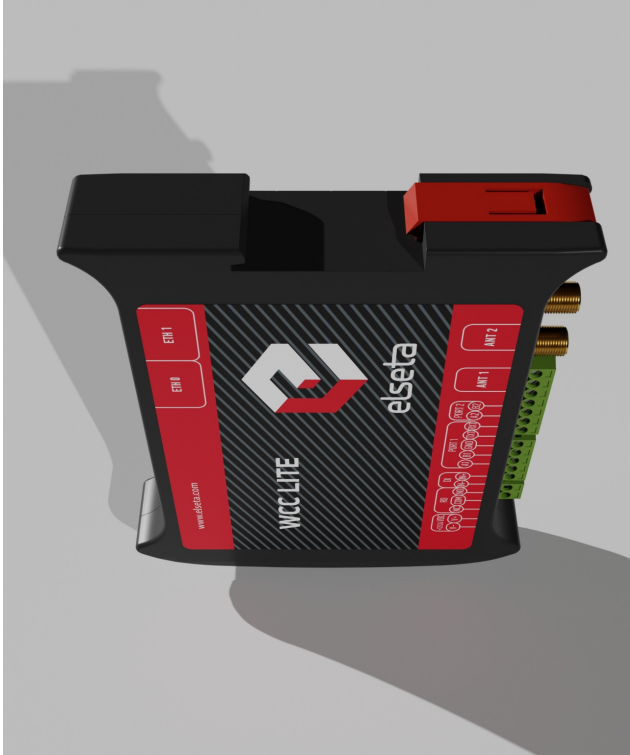


Figure 2: WCC Lite DIN rail mounting clip

## 5.2 Power

It is recommended to power WCC Lite from a 6W (minimum) 12-24V DC power supply. A full range is 5V to 36V.

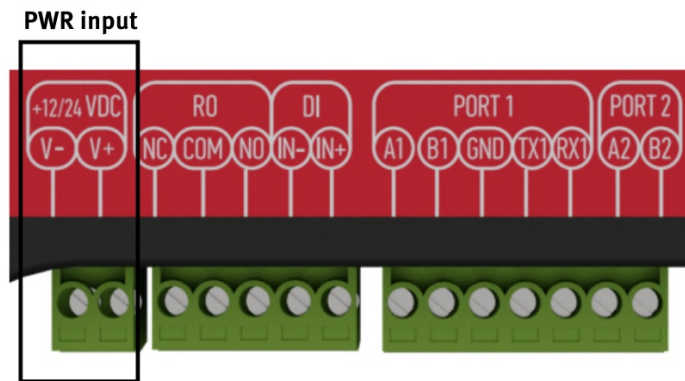


Figure 3: Power input connector



Note: Make sure that the device is compatible with your power source before proceeding! Check the label next to the power connector or on the side of the device.

## 5.3 SIM card slot

WCC Lite has an optional Dual-SIM card modem. To access both SIM cards, remove a transparent front panel cover and press through the marked hole with a small tool until the SIM holder pops out.



Figure 5: WCC Lite Dual-SIM card slot

## 5.4 Dual-SIM card slot

WCC Lite has an optional dual-SIM card modem. To access both SIM cards, remove a transparent front panel cover and press through the marked hole with a small tool until the SIM holder pops out.

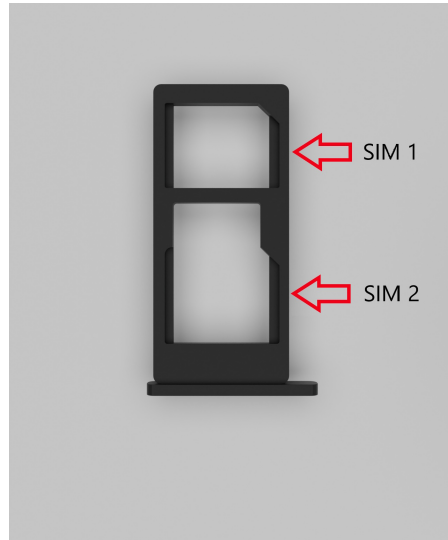


Figure 6: WCC Lite Dual-SIM card holder

To insert SIM cards, remove the Dual-SIM holder and fit SIM cards into it. Insert the holder with SIM cards into the slot.

**Note:** Be careful when removing or inserting a DUAL-SIM holder, as SIM cards can fall out.

**Note:** WCC Lite will automatically detect a SIM card insertion or removal.