

# 5.1 Mounting

To mount the device:

1. Secure the top of the mounting clip onto a DIN rail.
2. Push the bottom of a device forward to fix the clip in place.

To dismount the device:

1. Pull red-colored clip downwards (found at the bottom side of the DIN rail).
2. Pull back the bottom of the device.
3. Pull the device upwards to dismount it.

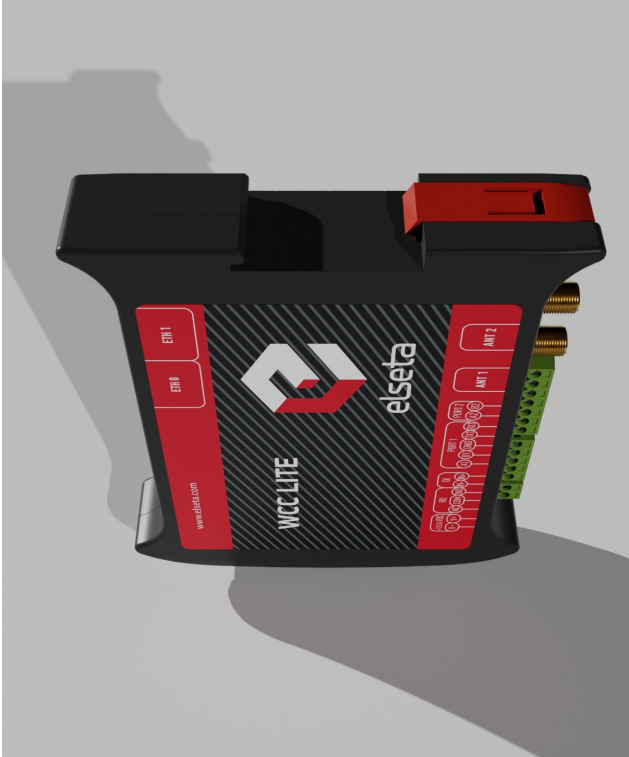


Figure 2: WCC Lite DIN rail mounting clip

---

🕒 Revision #1

★ Created 11 January 2024 09:21:54 by Gabriele

✎ Updated 11 January 2024 09:38:18 by Gabriele