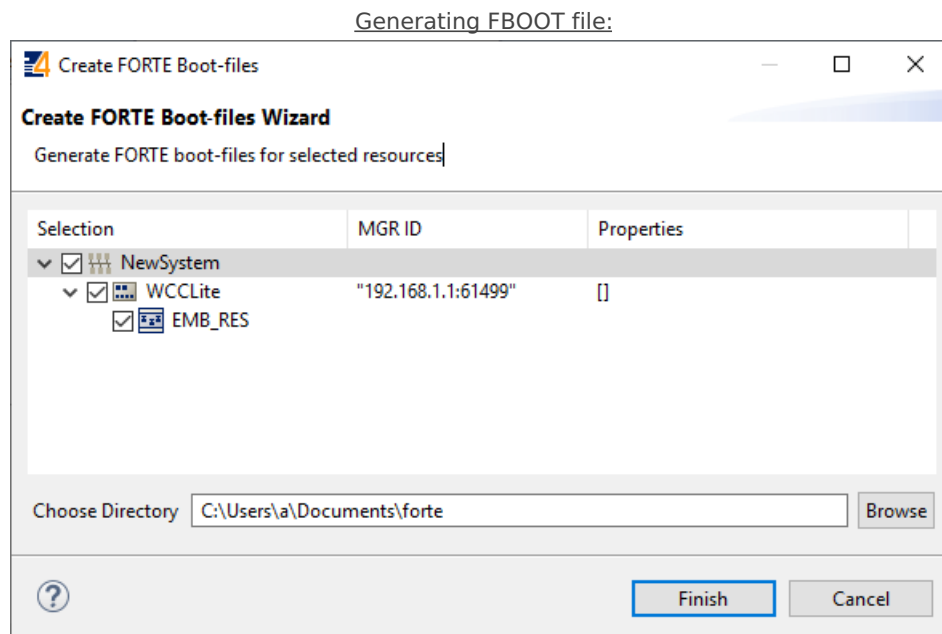


## 20.6 Generating and uploading FORTE logic file

After the PLC design is finished and debugged, such design can be compiled into FBOOT file and uploaded to one or multiple devices to be used in production. As application being debugged is not automatically considered as a default application, one should be uploaded explicitly via web interface.

To generate FORTE boot-files a user should select **Run->Create FORTE boot-file....** After that one should select devices which should have their boot files created as well as additional devices' properties and directory where these files should be stored as in picture below.



Upload button for FORTE file in web interface can be found in Protocol Hub tab, Configuration screen (FORTE boot file upload supported for versions v1.4.0 and above). You should see a view as in picture below.

WCC Lite Web interface. Upload and download of 4Diac configuration files:

PROTOCOL HUB

STATUS

SYSTEM

SERVICES

NETWORK

USERS

LOGOUT (ROOT)

CONFIGURATION

IMPORTED SIGNALS

EVENT LOG

PROTOCOL CONNECTIONS

SCRIPT-RUNNER

### Protocol configuration

**IMPORT PROTOCOL CONFIGURATION**

Here you can import Excel configuration file. Up to 1000 signals are allowed. All previous signals will be replaced.

Configuration file:	<input type="button" value="Choose File"/> No file chosen	<input type="button" value="Import configuration"/>
PLC (IEC-61499) Boot file:	<input type="button" value="Choose File"/> No file chosen	<input type="button" value="Import FBOOT file"/>
IEC61850 Client model file:	<input type="button" value="Choose File"/> No file chosen	<input type="button" value="Import client model file"/>
IEC61850 Server model file:	<input type="button" value="Choose File"/> No file chosen	<input type="button" value="Import server model file"/>

**DOWNLOAD CONFIGURATION**

Template configurations:

After the file has been imported one should be able to download it from the same screen as seen in the picture before.

Please note that only files with \*.fboot extension are allowed.



Uploading a file saves its name and shows it in the web interface. It is advised to carefully choose a filename to separate different versions of PLC application files.

🕒 Revision #1

★ Created 11 January 2024 09:21:45 by Gabriele

✎ Updated 11 January 2024 09:38:18 by Gabriele