

5.1 Mounting

To mount the device:

1. Secure the top of the mounting clip onto a DIN rail.
2. Push the bottom of a device forward to fix the clip in place.

To dismount the device:

1. Pull red-colored clip downwards (found at the bottom side of the DIN rail).
2. Pull back the bottom of the device.
3. Pull the device upwards to dismount it.

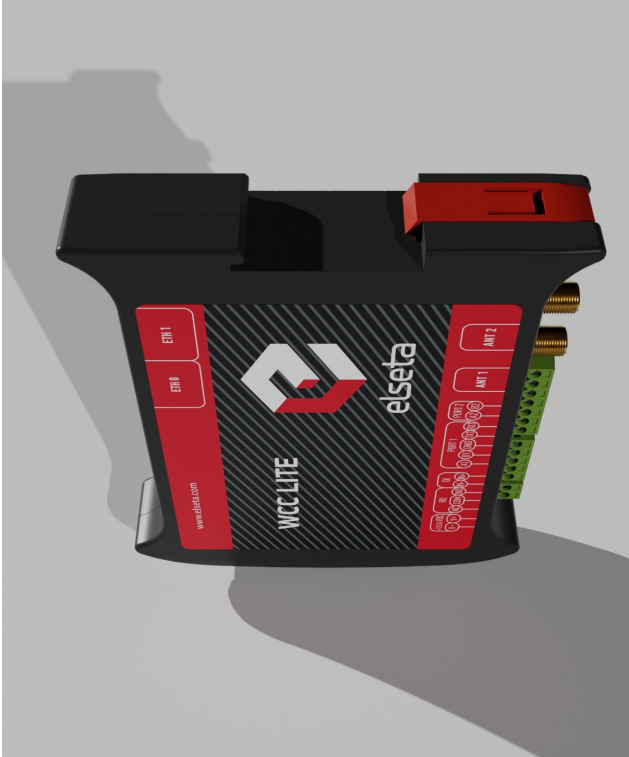


Figure 2: WCC Lite DIN rail mounting clip

🔄Revision #2

★Created 7 October 2022 10:35:33 by Lukas Taroza

✎Updated 23 November 2022 09:30:58 by Gabriele