

15.2 IEC 61850 Server

WCC Lite can act as a IEC 61850 server to serve data to remote SCADA systems. For example, WCC Lite can be used to acquire data from various protocols (Modbus, IEC 60870-5-103, etc.), this data can be redirected and propagated further to a single or multiple IEC 61850 clients. IEC 61850 Server supports TCP and TLS connection types. TCP connection can be secured with password authentication.

Commands

WCC Lite **IEC 61850 Server** implementation defines four command types which are described by their control model:

- **Case 1:** Direct control with normal security (direct-operate);
- **Case 2:** SBO control with normal security (operate-once or operate-many);
- **Case 3:** Direct control with enhanced security (direct-operate);
- **Case 4:** SBO control with enhanced security (operate-once or operate-many).

Normal security commands are considered for execution if the command signal is found in Excel configuration. There aren't any additional checks in command execution in any master protocol.

Enhanced security commands need feedback from master protocol to either to succeed or fail. If feedback is not received within **command_ack_timeout_ms** timeframe, the command is considered as failed.

Command value attributes (e.g. stVal) must be updated separately (if they need to be updated).



When using SBO commands, select is not routed to master protocol and select logic is performed only in IEC 61850 Server protocol.

Configuring datapoints

To use IEC 61850 Server in WCC Lite, it has to be configured via an Excel configuration and data model must be uploaded. This configuration contains two Excel sheets where parameters have to be filled in - Devices and Signals.

IEC 61850 Server parameters for Devices tab

Parameter	Type	Description	Required	Default value (when not specified)	Range	
					Min	Max
name	string	User-friendly name for a device	Yes			
description	string	Description of a device	No			
device_alias	string	Alphanumeric string to identify a device	Yes			
enable	boolean	Enabling/disabling of a device	No	1	0	1
protocol	string	Protocol to be used	Yes		IEC 61850 Server	
tls	string	Selecting if TLS should be used	No	0	0	1
bind_address	string (IP address format)	IP address of and interface to use with server	No	0.0.0.0		
host	string (IP address format)	IP address list of allowed IPs (separated with spaces)	Yes			
port	integer	TCP communication port	Yes			
tls_local_certificate	string	Local certificate for TLS connection	Yes (for TLS)			
tls_peer_certificate	string	Certificate authority file for TLS connection	Yes (for TLS)			

tls_private_key	string	File consisting of private key for TLS connection	Yes (for TLS)			
event_history_size	integer	Event log size	No			
ied_name	string	Name of an Intelligent Electronic Device	Yes			
authorization	string	Authorization type	No		password	
password	string	Authorization password for server device	Yes (if authorization is yes)			
model_filename	string	Filename of data model uploaded to WCC (with or without file extension)	Yes			
edition	string	Which IEC61850 edition to use.	No	2	1,2, 2.1	
command_ack_timeout_ms	integer	Timeframe (ms) in which enhanced-security commands must be acknowledged (Default: 3000)	No	3000		
report_buffered_size	integer	Report control blocks buffer size in bytes (Default: 65536)	No	65536		
report_unbuffered_size	integer	Unbuffered report control blocks buffer size in bytes (Default: 65513)	No	65513		

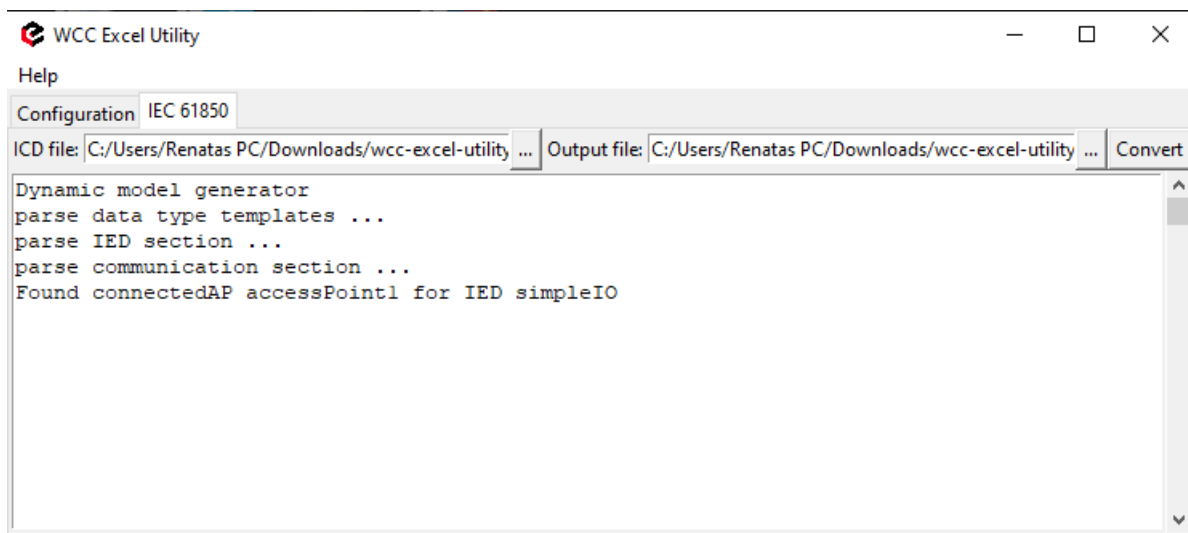
IEC 61850 Server parameters for Signals tab

Parameter	Type	Description	Required	Default value (when not specified)	Range	
					Min	Max
signal_name	string	User-friendly signal name	Yes			
device_alias	string	Device alias from a Devices tab	Yes			
signal_alias	string	Unique alphanumeric name of the signal to be used	Yes			
enable	boolean	Enabling/disabling of an individual signal	No	1	0	1
log	boolean	Allow signal to be logged. If log is 0 signal will not be logged. If log is more than 0 signal will be logged	No	0		
number_type	string	Number format type (BOOLEAN, FLOAT, INT16, etc.)	Yes			
Id_instance	string	Instance of a logical device	Yes			
In_class	string	Logical node class type	Yes			
In_instance	integer	Instance of a logical node	No			


In_prefix	string	Prefix of logical node string	No			
cdc	string	Common Data Class (CDC) name	Yes		SPS, DPS, INS, ENS, ACT, ACD, MV, CMV, SAV, SPC, DPC, INC, ENC, BSC, ISC, APC, BAC	
data_object	string	Name of data object in dataset	Yes			
da_value	string	Name of a data attribute value node	Yes			
da_time	string	Name of a data attribute time node	No			
da_quality	string	Name of a data attribute quality node	No			
da_fc	string	Functional constrain for data object	Yes		ST,MX, CO, SP	
control_model	string	Model of output control	No	status-only	status-only, direct-with-normal-security, sbo-with-normal-security, direct-with-enhanced-security, sbo-with-enhanced-security	

Converting and uploading data model

To use IEC61850 Server protocol in WCC Lite, user must upload a data model in specific format (file extension .cfg). These data models can be converted from SCL files (.icd or .cid files). To convert a data model, the user must use WCC Excel Utility. There's a separate tab for this operation as shown in picture below.



Converted file can be uploaded in WCC Lite web interface, Protocol Hub section. Current model can be also downloaded in the same page as shown in picture below.

PROTOCOL HUB	STATUS	SYSTEM	SERVICES	NETWORK	USERS	LOGOUT (ROOT)	
CONFIGURATION	IMPORTED SIGNALS	EVENT LOG					

Protocol configuration

IMPORT PROTOCOL CONFIGURATION

Here you can import Excel configuration file. Up to 1000 signals are allowed. All previous signals will be replaced.

Configuration file:	<input type="button" value="Choose File"/> No file chosen	<input type="button" value="Import configuration"/>
PLC (IEC-61499) Boot file:	<input type="button" value="Choose File"/> No file chosen	<input type="button" value="Import FBOOT file"/>
IEC61850 Server model file:	<input type="button" value="Choose File"/> No file chosen	<input type="button" value="Import server model file"/>

DOWNLOAD CONFIGURATION

Current configuration (IEC61850-server-test (1).xlsx):

Template configuration:

Current IEC 61850 Server model file (Elseta_SimpleIO.cfg):

Debugging an IEC 61850 server application

If the configuration for IEC 61850 Server is set up, a handler for the protocol will start automatically. If the configuration is missing or contains errors, the protocol will not start. It is done intentionally to decrease unnecessary memory usage.

⚠ If IEC 61850 Server does not work properly (e.g. no communication between devices, data is corrupted, etc.), a user can launch a debug session from command line interface and find out why the link is not functioning properly.

 To launch a debugging session, a user should stop `iec61850-server` process and run `iec61850-server` command with respective flags as you can see below:

```
iec61850-server
```

```
-h [--help] Show help message
-c [--config] arg Configuration file location
-V [--version] Show version
-d [--debug] arg Set Debug level
-r [--redis] Show Redis messages
-C [--commands] Show command messages
-R [--readyfile] arg Ready notification file
```

🔄Revision #4

★Created 7 October 2022 10:33:39 by Lukas Taroza

✎Updated 6 January 2023 12:09:06 by Tautvilis