

5 Installing the WCC Lite

- 5.1 Mounting
- 5.2 Power
- 5.3 SIM card slot
- 5.4 Dual-SIM card slot

5.1 Mounting

To mount the device:

1. Secure the top of the mounting clip onto a DIN rail.
2. Push the bottom of a device forward to fix the clip in place.

To dismount the device:

1. Pull the red-coloured clip downwards (found at the bottom side of the DIN rail).
2. Pull back the bottom of the device.
3. Pull the device upwards to dismount it.

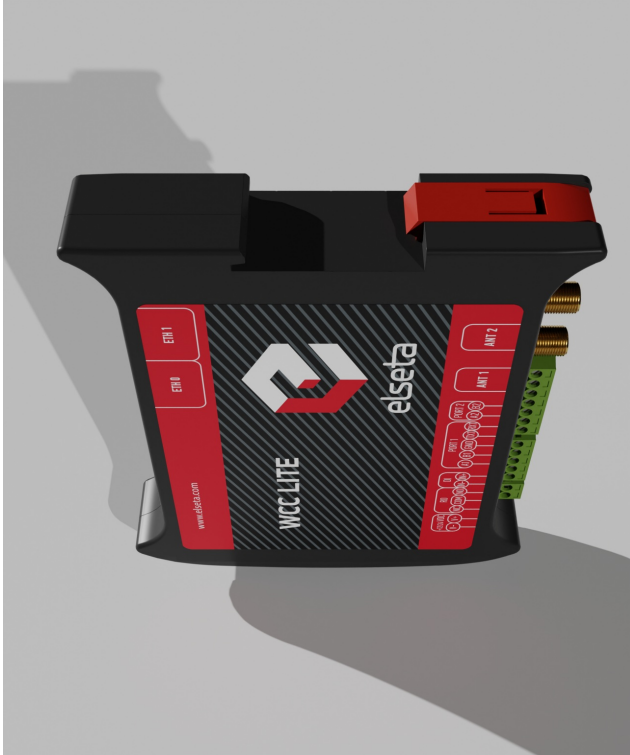


Figure 2: WCC Lite DIN rail mounting clip

5.2 Power

It is recommended to power WCC Lite from a 6W (minimum) 12-24V DC power supply. A full range is 5V to 36V.

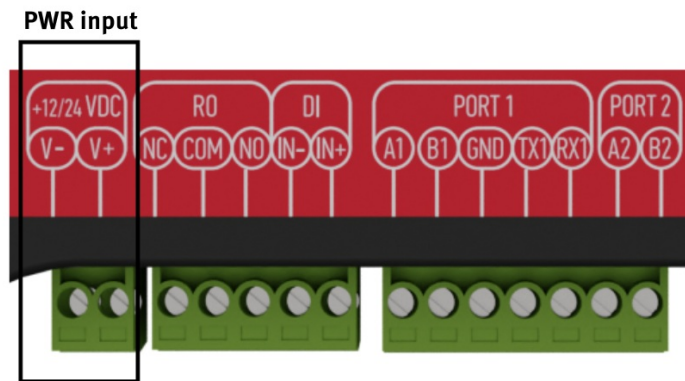


Figure 3: Power input connector



Note: Make sure that the device is compatible with your power source before proceeding! Check the label next to the power connector or on the side of the device.

5.3 SIM card slot

WCC Lite has an optional Dual-SIM card modem. To access both SIM cards, remove a transparent front panel cover and press through the marked hole with a small tool until the SIM holder pops out.



Figure 5: WCC Lite Dual-SIM card slot

5.4 Dual-SIM card slot

WCC Lite has an optional dual-SIM card modem. To access both SIM cards, remove a transparent front panel cover and press through the marked hole with a small tool until the SIM holder pops out.

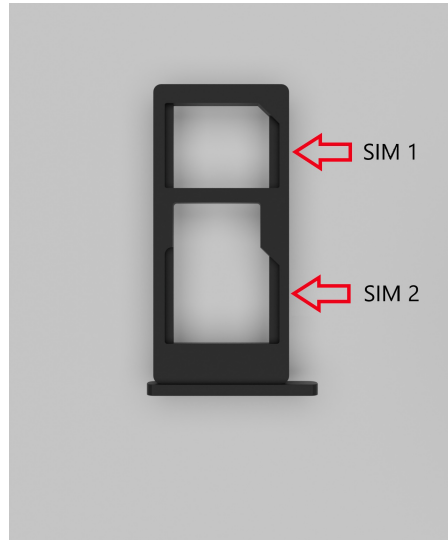


Figure 6: WCC Lite Dual-SIM card holder

To insert SIM cards, remove the Dual-SIM holder and fit SIM cards into it. Insert the holder with SIM cards into the slot.

Note: Be careful when removing or inserting a DUAL-SIM holder, as SIM cards can fall out.

Note: WCC Lite will automatically detect a SIM card insertion or removal.