

IOMOD 8DI8DO User Manual IEC 60870-5-101

Introduction

IOMod 8DI8DO is a small-size stand-alone Modbus RTU, IEC 60870-5-103 or IEC-60870-5-101 digital input and digital output controller (protocol depends on firmware). IOMod can be used for industrial applications, where digital signaling is used and robust communication is needed. IOMod is an ideal solution for applications such as data acquisition, control, and process monitoring at remote places. This user manual is written for IEC 60870-5-101 protocol firmware version.

Features

- 8 digital inputs;
- Configurable active input signal polarity or input inversion;
- 8 digital open collector outputs;
- Galvanically isolated inputs and outputs;
- Pulsed or latched mode for individual outputs;
- Possible output feedback measurement with inputs;
- Configuration over USB console;
- Values with data and time information;
- Drag and Drop firmware upgrade over USB mass storage;
- Modbus RTU, IEC-60870-5-103, IEC-60870-5-101 communication over RS485;
- Software-selectable line termination resistor on RS485;
- LED indication for input/output and data transmission;
- Easy integration with WCC Lite gateway and CloudIndustries.eu platform;

Operational information

IOMod 8DI8DO uses Modbus RTU, IEC 60870-5-103, or IEC 60870-5-101 protocol to communicate with the master device over the RS485 interface. Protocol used by the device can be changed by uploading the corresponding firmware. Default communication settings are 9600 baud rate, 8E1, Link address – 1.

IOMod 8DI8DO configuration can be changed over a USB interface with a terminal console like PuTTY or similar.

Status LED

Status LED can be in 3 colors :

Red - Missing power source to the outputs.

Blue - Device connected to USB.

Green - Normal operation.

Rx/Tx LED

The RX/TX LED on the IOMod flashes when data is either being transmitted or received via the RS485 port.

IEC 60870-5-101 working information

Initialization

IOMod uses a standard IEC-60870-5-101 communication scheme. Initiation, control messages, and queries are initiated by the master (controlling station), while the IOMod device (controlled station) only answers these requests. Therefore, the first message should be sent by the master to request status of link (function code = 9). This message is answered by IOMod with the status of link (function code = 11) if link is available. Otherwise there is going to be no response. After receiving the status of link the master will send Reset of remote link command (function code = 0) to restart the communication. The IOMod can respond with either acknowledgment (function code = 0, ACK) or Negative Acknowledgment (function code = 1, NACK). If IOMod respond is ACK then the initialization procedure is finished. The described procedure enables the master to proceed with sending other messages defined by the IEC-60870-5-101 protocol.

Data polling

When initialization is complete, the master may request data from the IOMod device with general interrogation. Although according to the protocol specification IOMod will send data on value change. The 8DI8DO IOMod responds with type 30 (M_SP_TB_1) a single point value with a time tag.

Output control

To control device outputs master (controlling station) sends a command conforming to the IEC-60870-5-101 protocols. The IOAs for outputs are [1,8]. By sending the 45-type command (C_SC_NA_1, single point command) with the selected IOA you can either turn ON or OFF outputs, just make sure you have the power cable connected to the output power at the top of the IOMod. Negative acknowledge is returned if the sent command isn't configured. For example wrong IOA address or Type.

Input messages

When input status changes, IOMod device filters input glitches through filters with a user-configurable filter time. When the filter is passed device sends a "Spontaneous" message with the 30 data types (M_SP_TB_1), and "IOA" as the input pin number shifted by 8.

Time synchronization

To initiate the time synchronization between devices the master must send a Clock Sync command. The command type is C_CS_NA_1 (103) and the Cause of Transmission (COT) has to be 6. The command has to be sent to the correct link address and CASDU, which is the same as the link address by default. If the sent frame is correct the IOMod will respond with a C_CS_NA_1 (103) type command with the COT (cause of transmission) of 7 and the **p/n** bit will be positive (0) also the command will be time-tagged with the **device** time. If the time synchronization feature is disabled or the command is sent to an undefined CASDU the response is the same except the **p/n** bit will be negative (1).

General interrogation

General Interrogation (GI) is initiated by the master sending the General Interrogation command. The command type is C_IC_NA_1 (100) and the Cause of Transmission (COT) has to be 6. The command has to be sent to the correct link address and CASDU, which is the same as the link address by default. If the sent frame is correct the IOMod will respond with a C_IC_NA_1 (103) type command with the COT (cause of transmission) of 7 and the **p/n** bit will be positive (0). Otherwise, it will respond with the same command just that the **p/n** bit will be negative (1). Then the device will begin to send all of its data. After that's done the IOMOD will also send another 100 type command with the COT (cause of transmission) of 10 (ActTerm) meaning the general interrogation is over.

IOAs [1,8] are outputs [9,16] - inputs

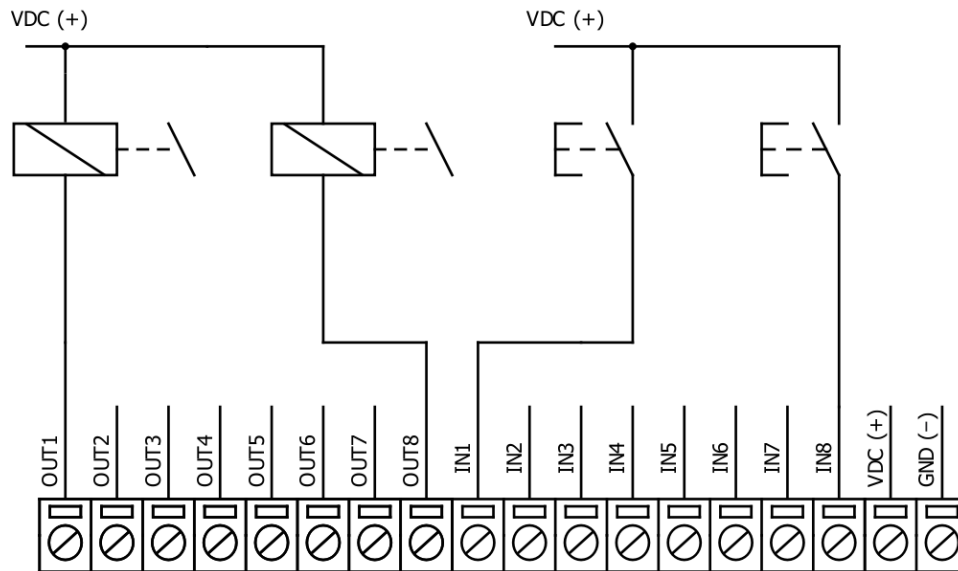
Device configuration

Input inversion and polarity selection

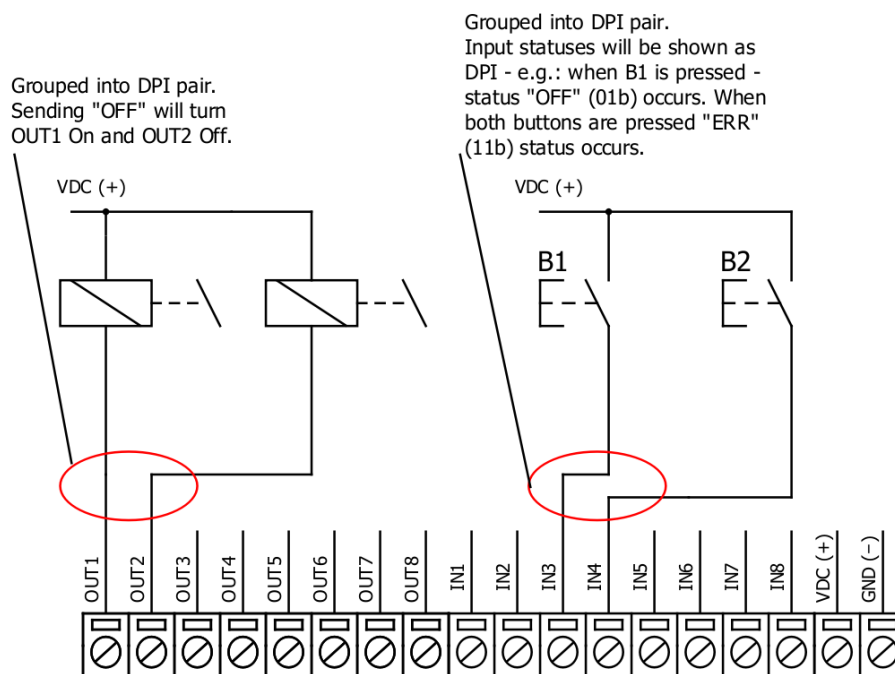
When active low signaling is needed, the user can configure input polarity. When internal pull-up resistors are turned on, all input statuses are turned on. When low signal is connected to input, status of that input is turned off. If user desires to turn input status on, when that input signal is low, user then inverts inputs logically. All input indication LED's stay the same (are not inverted).

Input / Output grouping

Sometimes two inputs or two outputs must be captured as one DPI input or output. Inputs and outputs can be grouped into the pairs of two. This allows outputs to be controlled by one DPI command (of address of first output in the group). Only two neighbor pins can be grouped into pair, while first pin in pair must be an odd number pin. When grouped, second pin in the pair is not used anymore – all requests for this pin generate an error. For example – OUT1 and OUT2 can be grouped, after that OUT2 is not used; OUT2 and OUT3 cannot be grouped; OUT3 and OUT4 can be grouped, but OUT4 is not used, etc.



Picture shows outputs and inputs ungrouped and controlled independently. In this mode, General Interrogation will be composed of 8 output states and 8 input states.



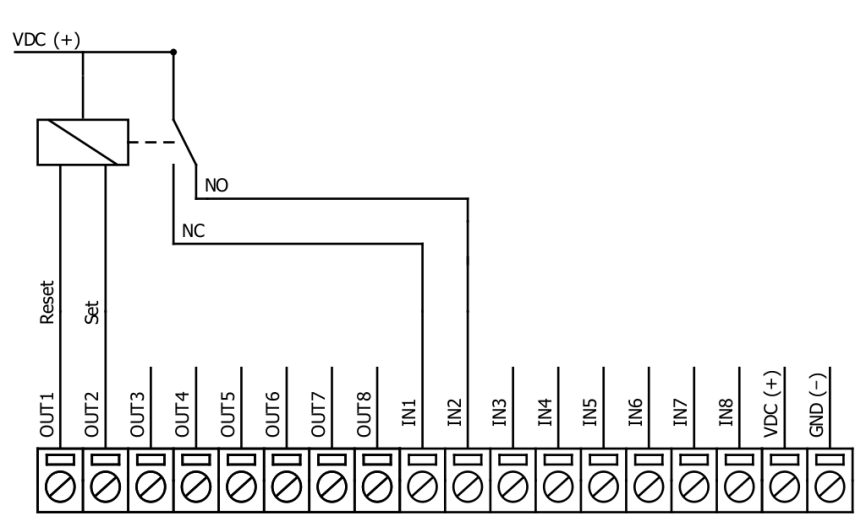
In addition to this, picture shows first two outputs grouped into pair, while 3rd and 4th inputs are grouped into pair. Now, General interrogation will be composed of 7 output states (with OUT2 missing), and 7 input states (with IN4 missing). Output and input numbers is represented by "Info number" in protocol.

Input filter

Input filter is a simple glitch filter with time input. This filter time corresponds to stable time that input must achieve before sending a status change.

Output pulse time

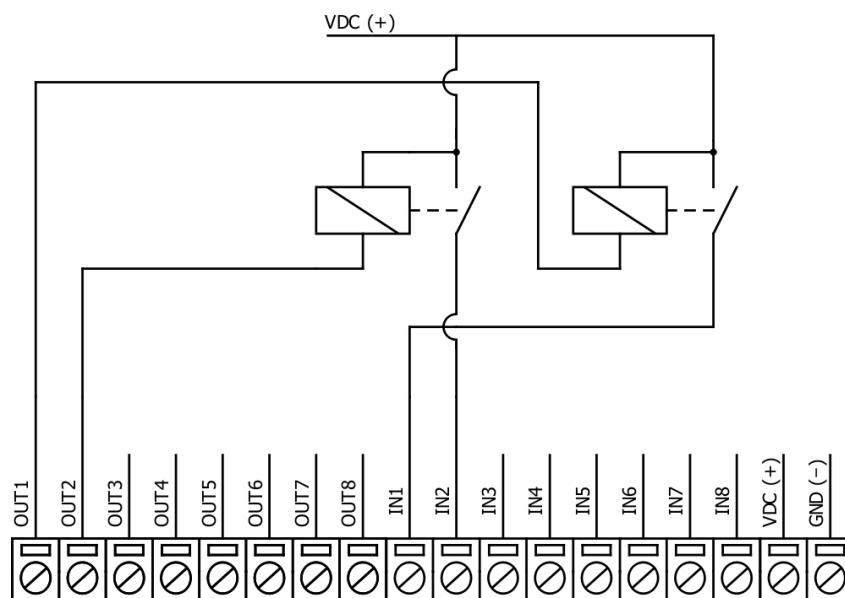
User can configure outputs to be pulse controlled - it means that output will be turned on for configured amount of time. When this time runs out, output is turned off. This is useful when pulse toggle relays are used. Output pulse is independent from output grouping option and can be used on both grouped and ungrouped outputs. When output is grouped, device will allow only one command completion at a time - when output is already turned ON, other "turn ON" requests will be responded with NACK. If user desires latching outputs to be used, output pulse time is set to 0.



Picture shows example of pulse output usage. In this example inputs and outputs are grouped, and output pulse time is set to 1s. When user sends ON command, OUT2 is pulsed for 1s, and relay is set. This will connect NO contact and IN2 will turn on (assuming it is not inverted). When user sends OFF command, OUT1 is pulsed, and relay is reset, turning IN1 on.

Output detection with inputs

Users can detect an output change with inputs.



To find out if relays are turned on, user can connect relay outputs to IMod inputs (maximum allowed voltage must be taken into account). When relays are turned on, device responds with IEC-60870-5-101 protocol message "Remote Operation". If inputs are never turned on or off, device will send "Remote Operation" message after time-out period, with current input statuses. Time-out period is configured by user as a Feedback Time.

Technical information

	System	
1.	Dimensions	101 x 119 x 17.5, mm
2.	Case	IP20, blend PC/ABS self-extinguishing, black
3.	Working environment	Indoors

4.	Operating temperature	-40 , +85°C
5.	Humidity	5-95% RH (non-condensing)
6.	Configuration	USB – serial console
7.	Firmware upgrade	USB – mass storage device
	Electrical specifications	
8.	Inputs	8 x 2kV RMS (1 minute) isolated 12-24VDC; Selectable inversion.
9.	Outputs	8 x 3kV isolated open collector outputs (300mA each, Max 50V);
	Power	
10.	Power Supply	9V to 33V
11.	Current consumption	70 mA

Mounting and installation guide

IOmod 8DI8DO RS485 interface

IOmod 8DI8DO has an integrated 120Ω termination resistor which can be enabled or disabled over USB configuration. It is recommended to use termination at each end of the RS485 cable. See typical connection diagram on Fig. 1.

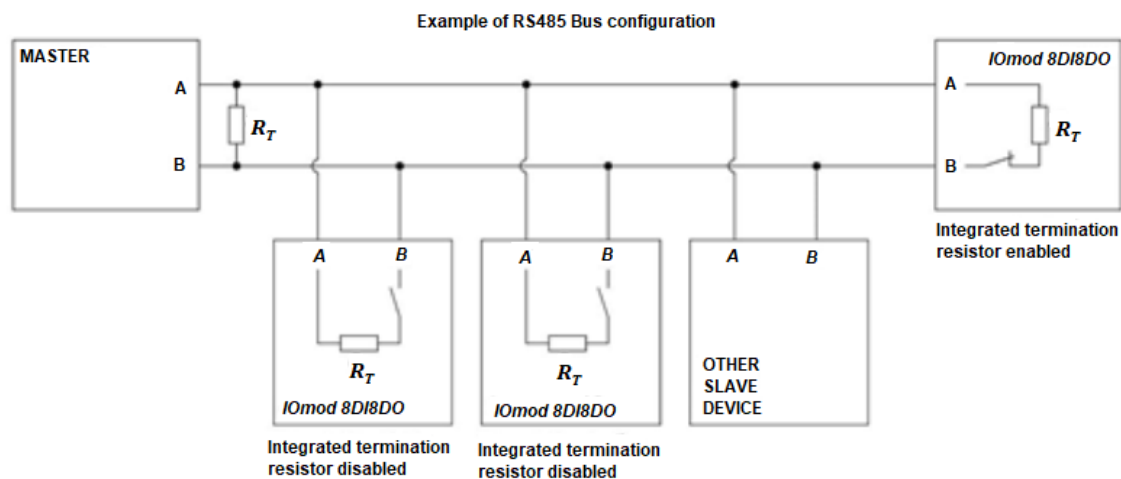


Fig. 1.

IOmod 8DI8DO has 1/8 Unit load receiver which allows to have up to 256 units on line (compared to standard 32 units). To reduce reflections, keep the stubs (cable distance from main RS485 bus line) as short as possible when connecting device.

IOmod 8DI8DO inputs

Typical application of IOmod 8DI8DO inputs is shown on Fig. 2. When default configuration for inputs is applied, user will see inputs connected to +12-24V as “high” or state “1” and input status LED will glow.

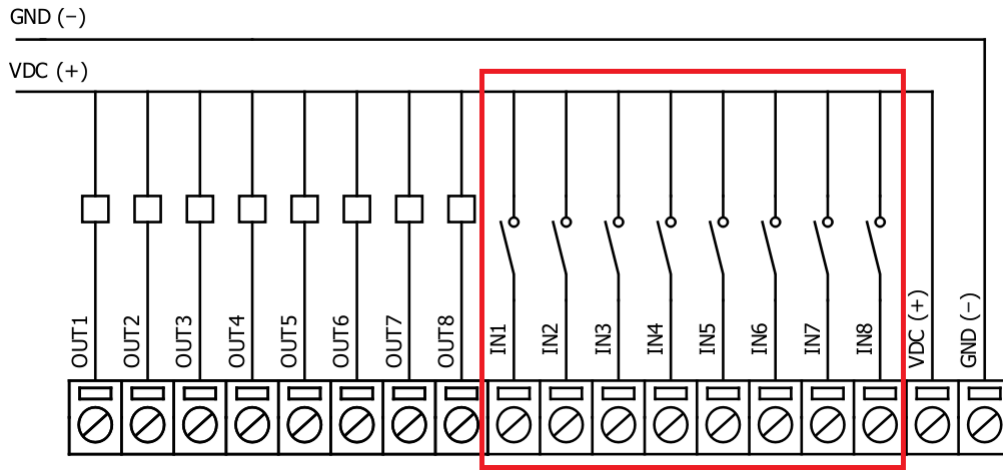


Fig. 2.

User also can configure to enable pull-up resistors (function is applied for all inputs) and software input inversion. With this configuration, user will see inputs connected to 0V (see Fig. 3.) as “high” or state “1”, input status LED will NOT glow.

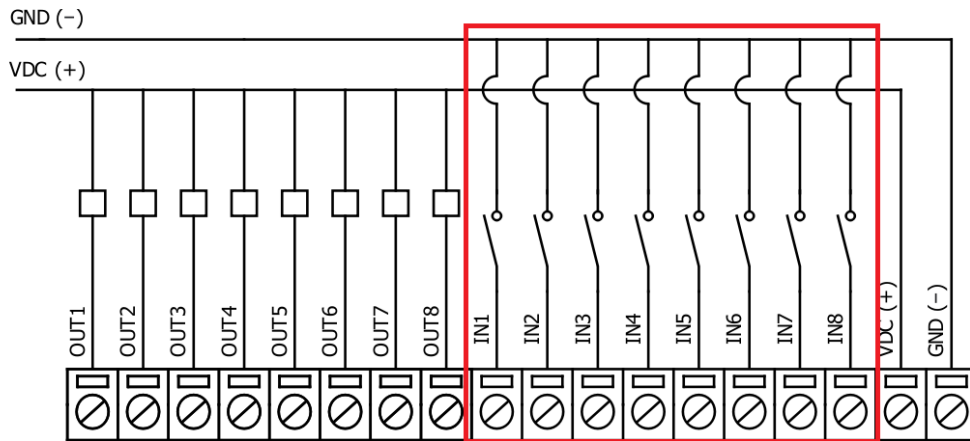


Fig. 3.

IOmod 8DI8DO outputs

IOmod 8DI8DO has 8 open collector digital outputs. Internal clamp diodes are connected to each output which makes IOmod 8DI8DO ideal for driving inductive loads like relays. Maximum 300mA per output is allowed. For higher loads outputs can be connected in parallel. Make sure your power supply can provide enough power. Typical application of outputs is shown on Fig. 4.

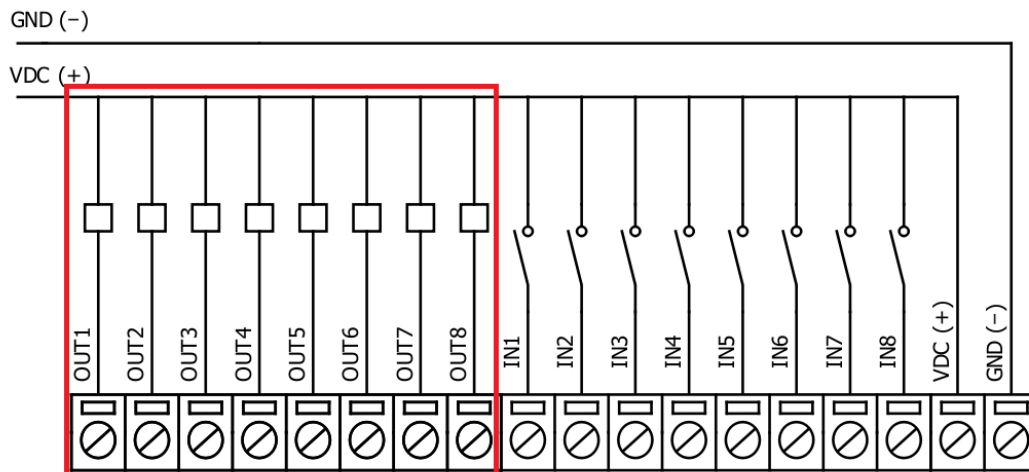


Fig. 4.

Configuration over USB

Driver installation

Device requires USB drivers to work as a Virtual COM port. First-time connection between device and computer could result in “Device driver software was not successfully installed” error (Fig. 5.).

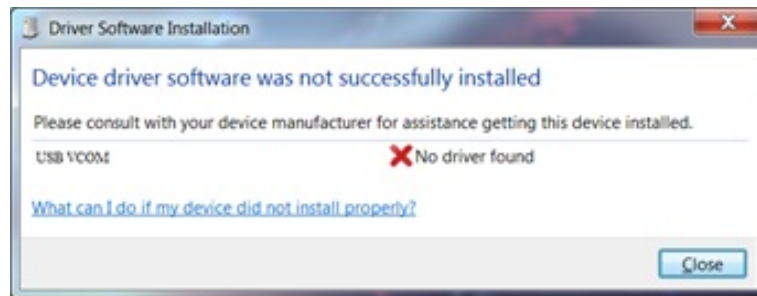


Fig. 5.

User then manually installs drivers by selecting downloaded driver folder:
Go to Control Panel -> Device Manager;
Select failed device;
Press “Update driver software”; screen in Fig. 6. should appear:

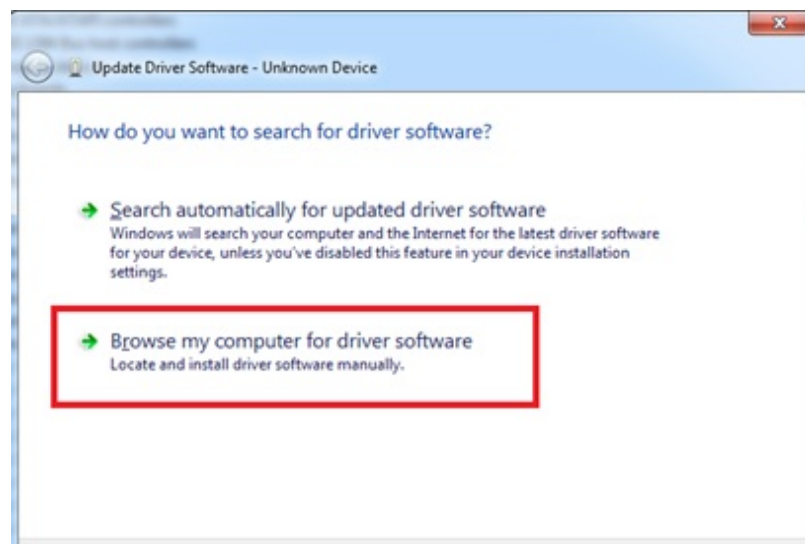
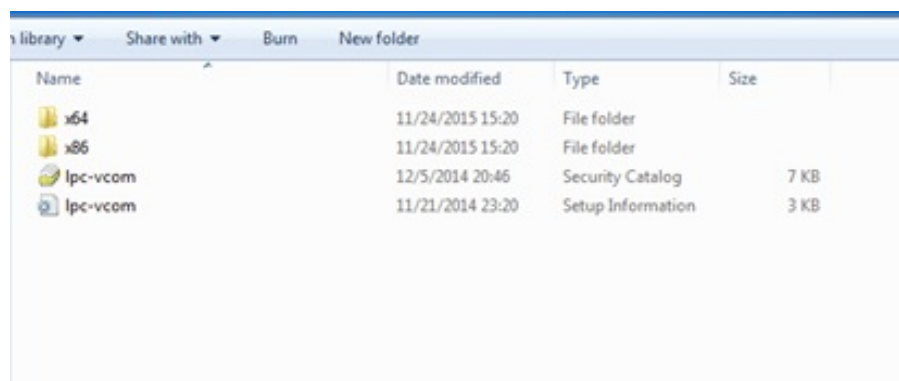


Fig. 6.

Select “x86” driver for 32-bit machine, or x64 for 64-bit machine. If not sure, select root folder (folder in which x64 and x86 lays inside).



IOmod configuration with PuTTY terminal

Configuration of IOmod device is done through CLI (Command Line Interface) on a virtual COM port. Drivers needed for MS Windows to install VCOM will be provided. To open up CLI simply connect to specific V-COM port with terminal software (it is advised to use PuTTY terminal software. If other software is being used, user might need to send <return> symbol after each command). When connected user should immediately see main screen. Accidental close of the terminal window doesn't stop USB connection, user can connect terminal program again, and press any key on keyboard to show up main menu again.

User can select the link address of the device as shown on Fig. 7.

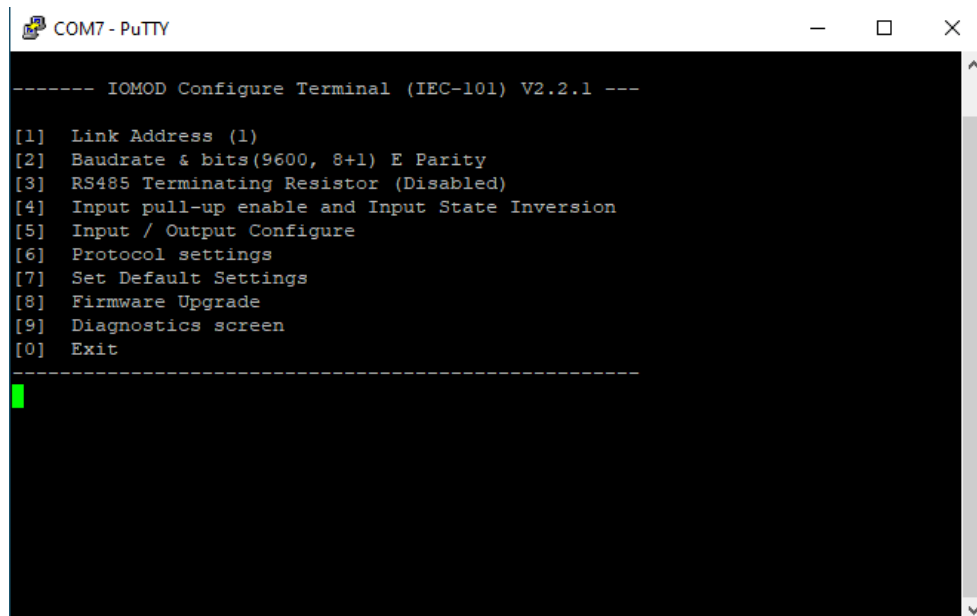


Fig. 7.

Navigation is performed by sending number to terminal. User then proceeds by following further on-screen instructions. For example, to set Baud rate, press [2] to enter baud rate screen; press [3] to edit; enter new configuration; press [RETURN] to save, or [ESC] to cancel changes. When done, press [0] (exit) before disconnecting device. Default values is set by pressing [7] on main screen and confirming changes [1]. Baud rate window is shown in Fig. 8.

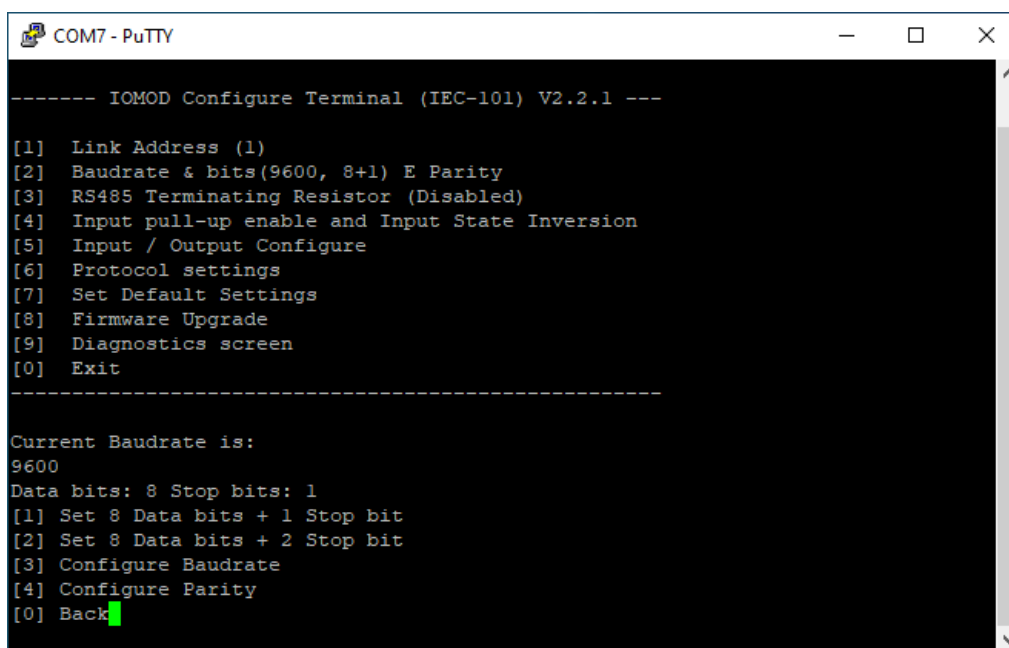


Fig. 8.

A lot of options can be changed after entering Input / Output configure screen (Fig. 9.). These include filter time, output pulse time, input and output configuration, output detection with inputs screens.

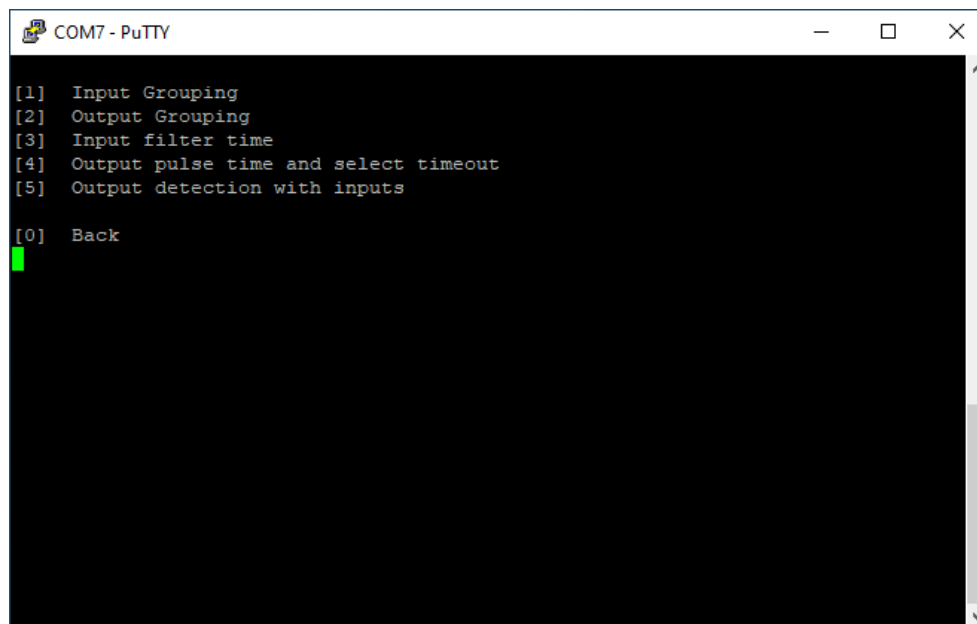


Fig. 9.

Input (Fig. 10.) and output grouping screen show the connection between neighbor pins. Straight pins show that input or outputs are not grouped. Grouped inputs or outputs contain fold slashes in direction of another pin in the pair.

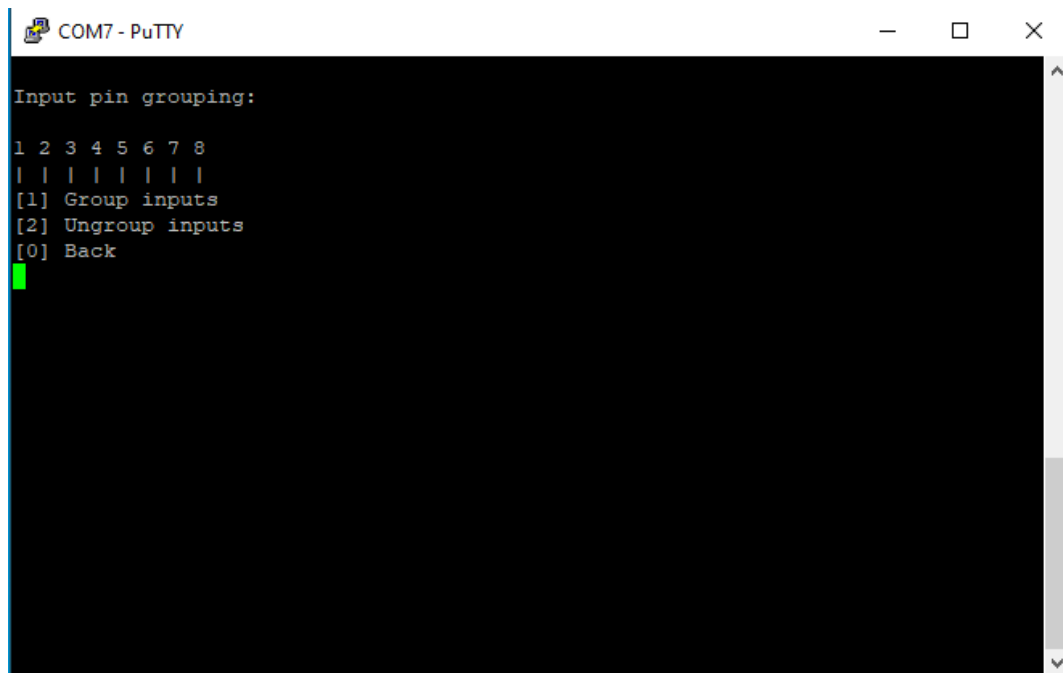


Fig. 10.

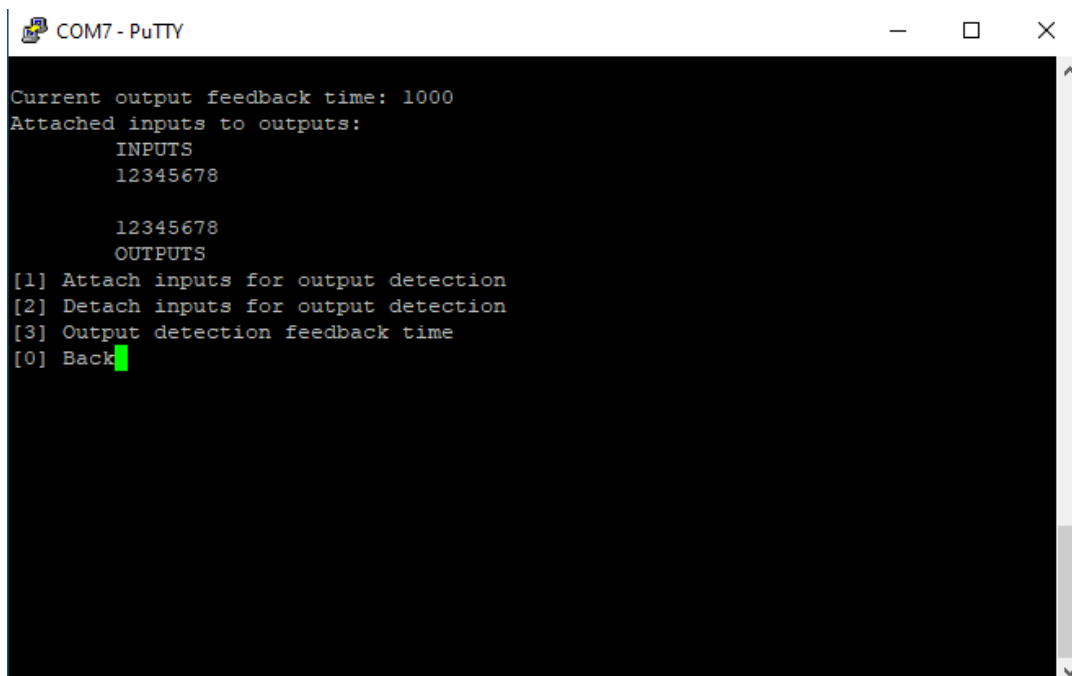


Fig. 11.

Input / Output Configure screen lets user to configure Output detection with input (Fig. 11.). This screen contains feedback time and connection between inputs and outputs. Connection between inputs and outputs is noted with straight pins. Attached pins are automatically grouped to conform to IEC-60870-5-101 protocol

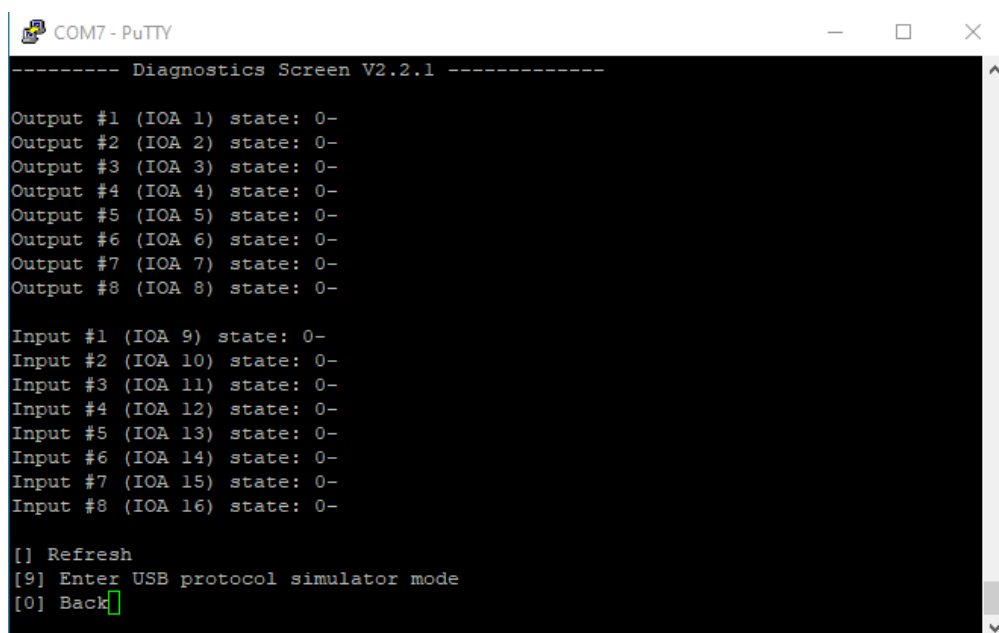


Fig. 12.

Changes in the device and firmware version are shown in a Diagnostics Screen. Such diagnostics screen for IOMod 8DIDO is shown in Fig. 12.

Main Menu

	Menu name	Function	Values	Default values
1.	Link Address	Setts Link address	1-255	1
2.	Baudrate, Parity and stop bits	Enters configuring screen for communication settings	8+1 or 8+2 (Data + Stop), None, Odd, Even, Mark, Space (Parity)	9600, 8+1, Parity -Even

3.	RS485 Terminating Resistor	RS485 120 Ohms Terminating Resistor	0 – 1 (off/on)	Disabled
4.	Input pull-up enable and state inversion	Enables input pull-up resistor. Inputs then activated by low signal; Input inversion (Inverts input states in protocol logic)	0 – 1 (off/on)	0 (both off)
5.	Input / Output configure	Enters screen for configuring (see 6.1 – 6.5 rows below)	-	-
5.1	Input grouping;	Groups or ungroups inputs	8 inputs ungrouped / 4 pairs grouped	All inputs ungrouped by default
5.2	Output grouping;	Groups or ungroups outputs	8 outputs ungrouped / 4 pairs grouped	All outputs ungrouped by default
5.3	Input filter time;	Input glitch filter – minimum stable time to detect input	1 – 60000 milliseconds	100
5.4	Output pulse time and select timeout;	Sets output pulse time	0 – 60000 milliseconds (0 if not used)	0
5.5	Output detection with inputs;	Attach and detach inputs to outputs for detection; Set detection timeout (timeout to send “Remote Operation” if inputs not triggered)	0 – 60000 milliseconds (0 if not used)	0
6.	Protocol settings;	Protocol settings;	-	-
6.1	Toggle 24/56 bit time	Changes toggle bit time either to 24 or to 56	24/56	56
6.2	Change IOA size	Changes IOA size	1-3	1
6.3	Toggle use of command qualifier	Enables or disables toggle use of command qualifier	Disabled/Enabled	Enabled
7.	Set default settings;	Sets Default Settings	(1 to confirm, 0 to cancel)	-
8.	Firmware update;	Mass Storage Device Firmware Upgrade	(1 to confirm, 0 to cancel)	-
9.	Diagnostics screen;	Input / Output states	-	-
0.	Exit;	Exit and disconnect	-	-

Protocol simulator

When entered diagnostics screen, user can turn on protocol simulator by pressing [9]. When protocol simulator is turned on, device will communicate through USB port rather than RS-485 line. Communication on RS-485 line is closed and all IEC-101 commands will be accepted only from USB. To exit this mode user must restart device.

Firmware upgrade over USB

To update device firmware user must enter main configuration menu and enter Firmware upgrade screen by pressing [8] is shown in Fig. 13.

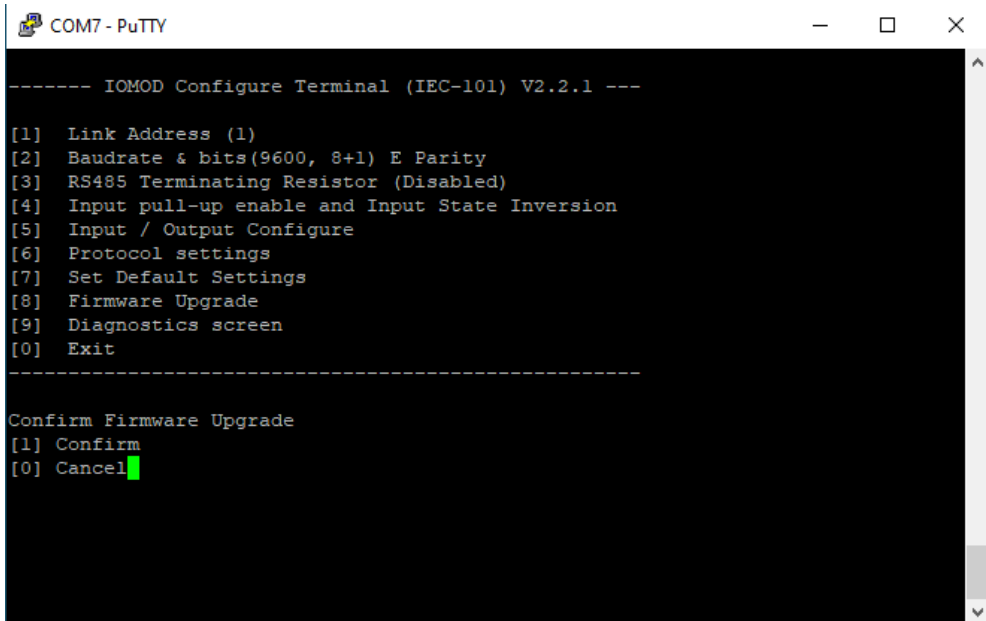


Fig. 13.

Confirm upgrade by pressing [1];

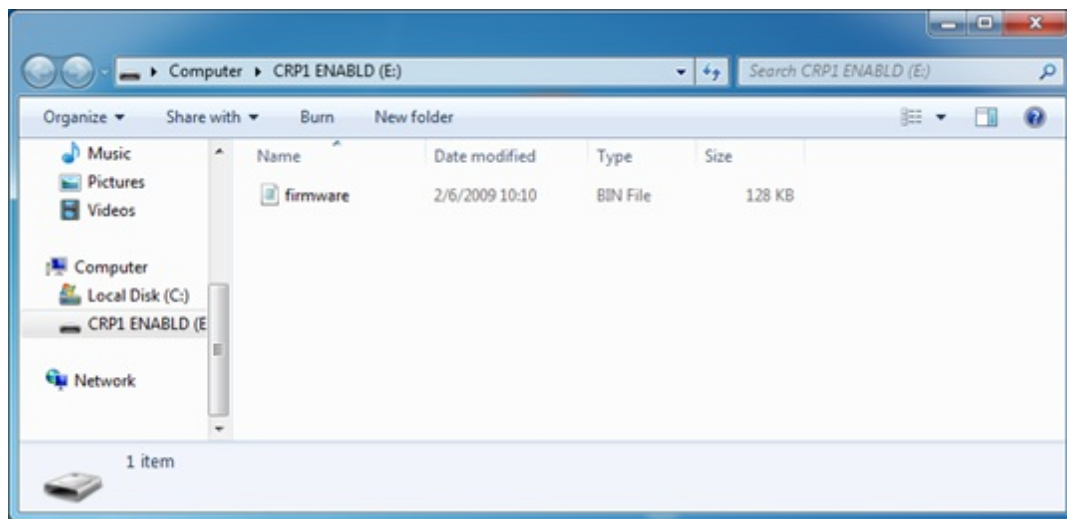
Device should enter a Firmware Upgrade mode. It means that device switches from USB Console mode into Mass storage device and computer recognize it as USB Storage.

	It is recommended to close terminal window when entered firmware upgrade mode.
---	--

Device should the reconnect as a Mass Storage Device:



User then must **delete** existing file “firmware.bin”, and simply drag and drop new firmware file.



Reconnect device, set default settings and check firmware version in Diagnostics screen.

⌚ Revision #19

★ Created 1 December 2021 13:46:57 by Tautvilis

✎ Updated 21 August 2023 08:01:04 by Gabriele