

# Firmware version 1

- IOMOD 16DI User Manual Modbus
- IOMOD 16DI User Manual IEC 60870-5-103
- IOMOD 16DI User Manual IEC 60870-5-101

# IOMOD 16DI User Manual Modbus

## Introduction

IOMOD 16DI is small sized stand-alone Modbus (RTU) or IEC 60870-5-103 digital input controller. IOMOD is used for industrial applications, where digital signaling is used and robust communication is needed. IOMOD is ideal solution for applications such as data acquisition, observation, process monitoring, testing and measurement at remote places. It is controlled over Modbus or IEC 60870-5-103 protocol, and can be used with any SCADA system.

## Features

- 16 digital inputs with configurable active signal polarity, or input inversion; Pulse count and ON time count
- Galvanically isolated inputs
- Configurable over USB
- Drag And Drop firmware upgrade over USB
- RS485 communication
- LED input indications, + Data transmission (Rx and Tx) indication.
- Small sized case with removable front panel
- DIN rail mount
- Operating temperature: from -30 to +70°C
- Power Requirements: 12-24 VDC

## Device operational information

IOMOD 16DI uses Modbus (RTU) or IEC 60870-5-103 protocol over the RS485 interface. The protocol used by the device can be changed by uploading the corresponding firmware. Default communication settings are: 9600 baudrate, 8N1, Slave address - 1.

### Status LED

Status LED can be in 2 colors :

Blue - Device connected to USB.

Green - Normal operation.

### Rx/Tx LED

The RX/TX LED on the IOMod flashes when data is either being transmitted or received via the RS485 port.

## MODBUS operational information

To read all input statuses, send 02 Modbus command (Read Discrete Inputs) 03 Modbus command with resolution of first register (0) and a size of 16. Returned value will show 16 input states.

To read all input registers' values, send 04 Modbus command (Read input registers) with resolution of first register (0) and size of 80. Returned data will show pulse count (first register) and ON time (2<sup>nd</sup> and 3<sup>rd</sup> registers) for each input - pulse count of input #2 will be at register 4<sup>th</sup>, and so on. ON time will be shown as seconds. ON time and pulse count will increase when input pulse is longer than Filter time, which is configured by user in USB terminal menu. Shorter pulses will be ignored in both pulse and ON time registers. From software version 1.10, as capacity of input counter expanded to 32-bits, additional 32 registers depict such wider values in registers 00048-00079. All these registers can be set by using 06 Modbus command.

To invert input states by software, configure device over USB terminal. Modbus commands one may use are shown in table below.

## Supported MODBUS functions

### 02 (0x02) Read Discrete Inputs

Reads status of digital inputs (Off or On). IOMOD 16DI has 16 digital inputs from address 0 to address 0xF; These inputs are active-high or active-low according to supply given to reference input. User can turn on logical input inversion (through USB).

### 03 (0x03) Read Holding Registers

Lets user read counter/timer values dedicated to digital inputs. There are 80 MODBUS registers. Values held in these registers are explained in a table below. There are two types of values - Pulse Counter and On Timer, the latter calculating the time that respective input was held in its active state.

#### 04 (0x04) Read Input Registers

Lets user read counter/timer values dedicated to digital inputs. There are 80 MODBUS registers. Values held in these registers are explained in a table below. There are two types of values - Pulse Counter and On Timer, the latter calculating the time in seconds that respective input was held in its active state. This function is deprecated and mirrors function 0x03 to conform to past versions of IOMOD 16DI.

#### 06 (0x06) Preset Single Register

Sets single register. Register addresses are identical to “*Read Input Registers*” addresses.

## Modbus register mapping table

Register	Description	Value range
<b>Read discrete inputs (02)</b>		
00000-00015	Reading digital inputs DI1-DI16	0-65535
<b>Read holding register (03), Read input register (04), Preset Single Register (06)</b>		
00000	Pulse count for DI1, Least Significant Word	0-65535
00001-00002	On time, in seconds, for DI1, Least Significant Word first	0-65535
...	...	...
00045	Pulse count for DI16, Least Significant Word	0-65535
00046-00047	On time, in seconds, for DI16, Least Significant Word first	0-65535
00048-00079	Pulse count for DI1-DI16, Least Significant Word First	0-65535

\*It is advised to set most significant word of counter/timer first

## Testing With “THE VINCI” software

To test IOMOD with default settings, user connects device through RS485 to Modbus master. Example using “The Vinci Expert” device as serial interface converter and adapter to PC with “The Vinci” software. Default settings for Modbus – 9600 baudrate; 8 data, no parity, 1 stop bit. When opening “The Vinci” software, choose Modbus serial – Master mode. In settings tab, choose station number (default – 1); configure tags (as described in section 2. Device working information); Press start and go to “Statistic” tab:

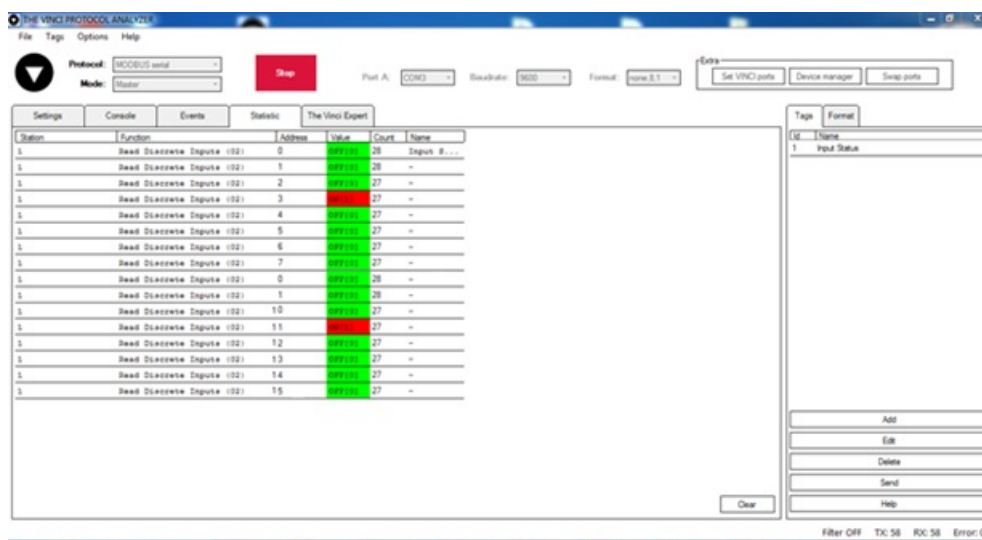


Fig. 3.1. Statistic tab in “The Vinci” application for Modbus communication

As seen in Fig. 3.1, Inputs are shown with info numbers 1-16, and function type - 160.

GI, time synchronization options can be found at right side of the program, in “System” tab.

Fig. 3.2 shows 1<sup>st</sup> + 2<sup>nd</sup> , 5<sup>th</sup> + 6<sup>th</sup> and 11<sup>th</sup> + 12<sup>th</sup> Inputs grouped (notice order of info numbers). These pairs is shown INTERM (00) because both inputs of pair are off (giving binary representation of 00b).

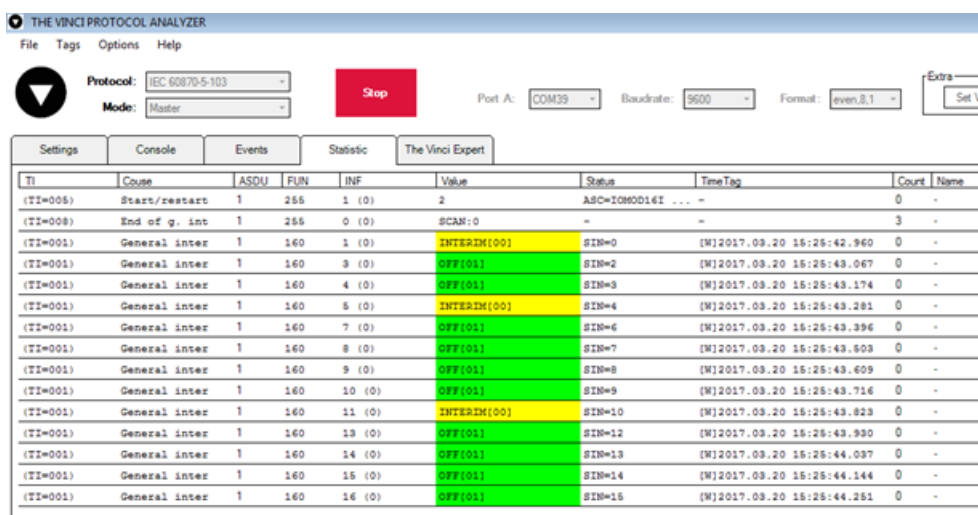


Fig.3.2. Statistic tab in “The Vinci” application for IEC-60870-5-103

## Technical information

	System	
1.	Dimensions	101 x 119 x 17.5, mm
2.	Case	ABS, black
3.	Working environment	Indoors
4.	Working temperature	-30   +70°C
5.	Recommended operating conditions	5 – 60°C and 20 – 80%RH;
6.	Configuration	USB

7.	Firmware upgrade	USB – mass storage device
	<b>Electrical specifications</b>	
8.	Inputs	16 X 2kV isolated 12-24VDC; ESD protected; Selectable inversion.
	<b>Power</b>	
9.	Power Supply	9V to 33V
10.	Current consumption	50mA @ 12VDC, 25mA @ 24VDC

## Mounting and installation guide

### IOMOD 16DI RS485 interface

IOMOD 16DI has integrated  $120\Omega$  termination resistor which can be enabled or disabled over USB configuration. It is recommended to use termination at each end of the RS485 cable. See typical connection diagram on Fig. 5.1.

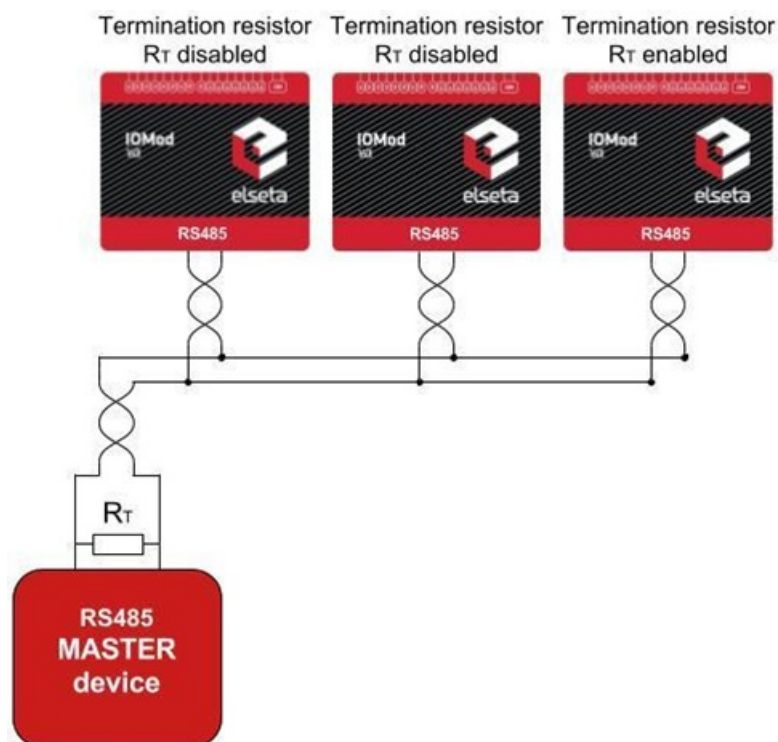


Fig. 5.1. Connection example

IOMOD 16DI has 1/8 Unit load receiver which allows to have up to 256 units on line (compared to standard 32 units). To reduce reflections, keep the stubs (cable distance from main RS485 bus line) as short as possible when connecting device.

### IOMOD 16DI inputs

Typical application of IOMOD 16DI inputs is shown on Fig. 5.2. When default configuration for inputs is applied, user will see inputs connected to +12/24V as "high" or state "1" and input status LED will glow.

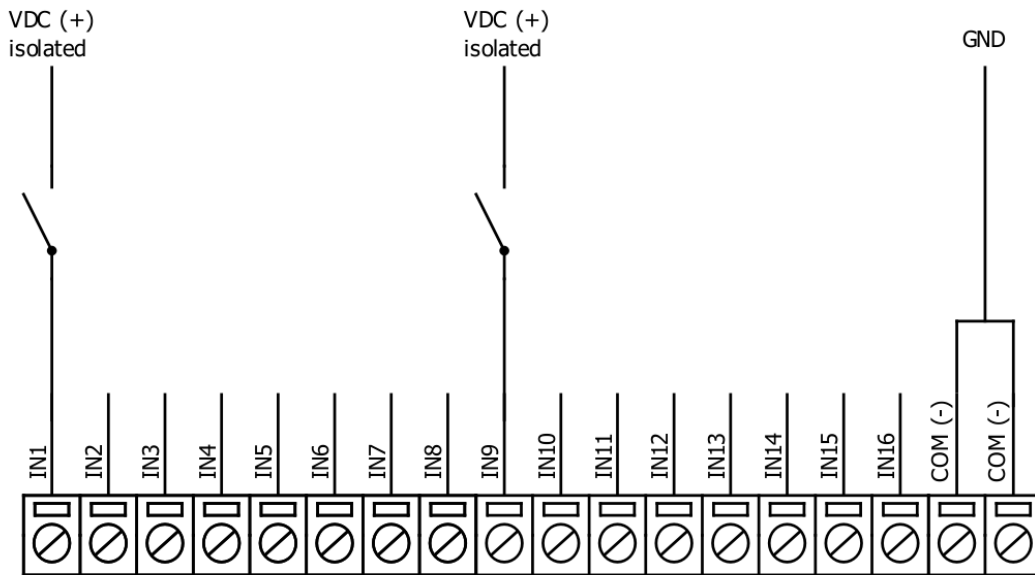


Fig. 5.2. Input configuration example

User can setup inputs to be driven by 0V (active low) signal (see Fig. 5.3). With this configuration, user will see inputs connected to 0V as “high” or state “1”, input status LED will glow.

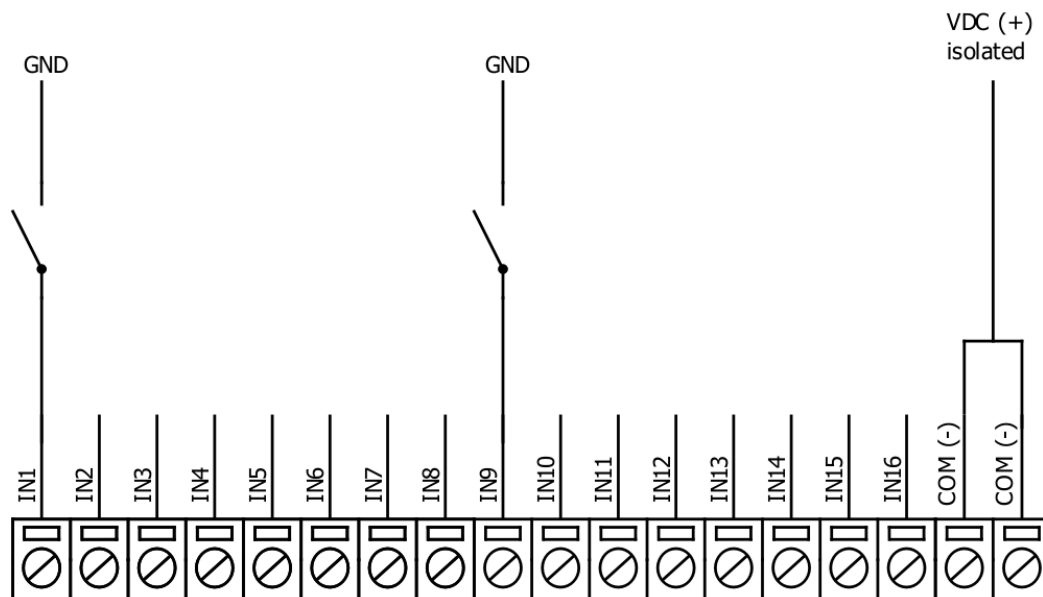


Fig. 5.3. Configuration of inverted inputs

## Configuration over USB

### Driver installation

Device requires USB drivers to work as virtual com port. First-time connection between device and computer could result in “Device driver software was not successfully installed” error (Fig. 6.1).

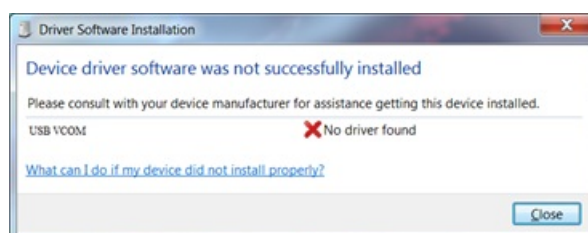


Fig. 6.1. Device driver error message

User then manually installs drivers by selecting downloaded driver folder:

Go to Control Panel -> Device Manager;  
Select failed device;  
Press "Update driver software"; following screen should appear (Fig 6.2).

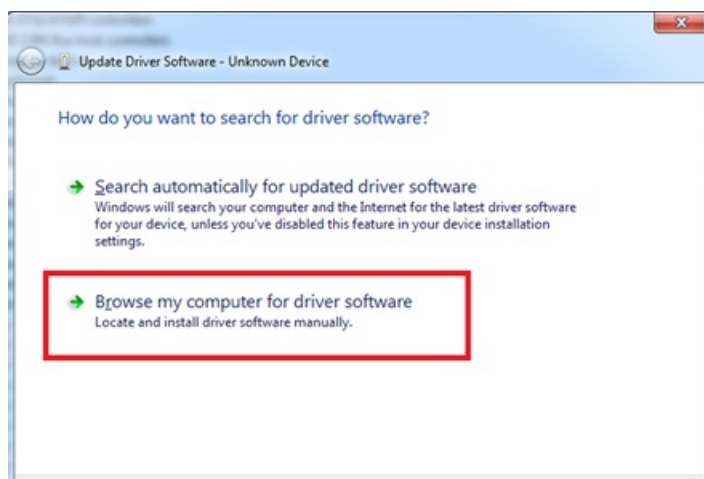


Fig. 6.2. Manually searching for device drivers

Select "x86" driver for 32bit machine, or x64 for 64bit machine. If not sure, select root folder (folder in which x64 and x86 lays inside).

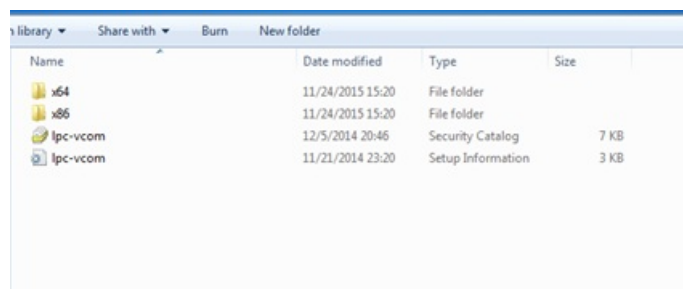


Fig. 6.3. Contents of device drivers' folder

## IOMOD configuration with PuTTY terminal

Configuration of IOMOD device is done through CLI (Command Line Interface) on virtual COM port. Drivers needed for MS Windows to install VCOM will be provided. To open up CLI simply connect to specific V-COM port with terminal software (advised to use PuTTY terminal software. If other software is being used, user might need to send <return> symbol after each command). When connected user should immediately see main screen:

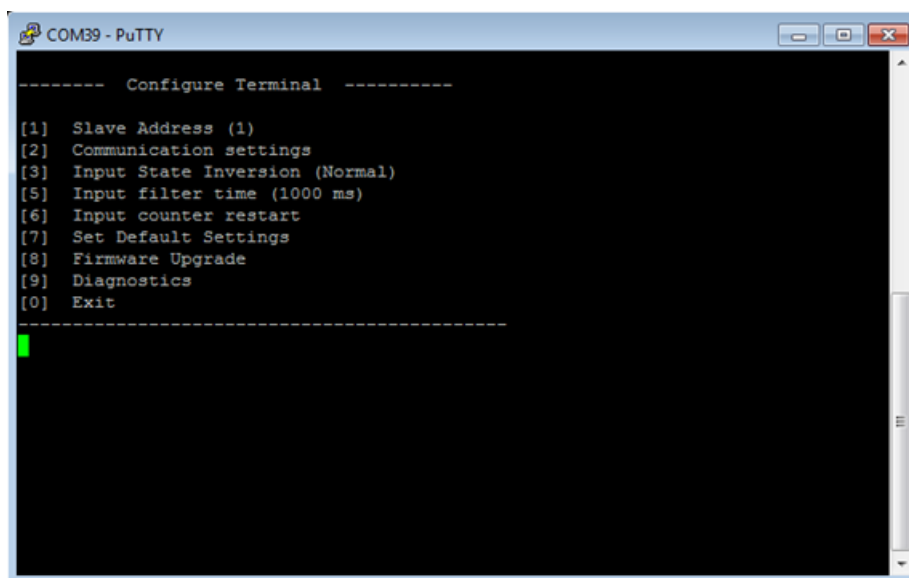


Fig. 6.4. Main menu example of configuration program via CLI

Navigation is performed by sending number to terminal. User then proceeds by following further on-screen instructions. For example, to set Baudrate, press [2] to enter Baudrate screen; press [1] to edit; enter new configuration; press [RETURN] to save, or [ESC] to cancel changes. When done, press [0] (exit) before disconnecting device. Default values is set by pressing [6] on main screen, and confirming changes [1].

If accidentally closed the terminal window, user can connect terminal program again, and press any key on keyboard to show up main menu.

## Main Menu

### Modbus

	Menu Name	Function	Values	Default Values
1.	Slave Address	Modbus Slave address / ID	1-247	(default: 1)
2.	Communication settings	Enters baudrate, data and parity bit, termination resistor screen	-	(default: 9600; 8+1+N; termination resistor - on)
3.	Input State Inversion	Input inversion (Inverts input states in modbus)	0 - 1 (off/on)	(default: 0)
5.	Input Filter time	Configures input pulse filter time	0 - 256000 (milliseconds)	(default: 100)
6.	Input counter restart	Restarts all input counter registers to 0	(1 to confirm, 0 to cancel)	-
7.	Set Default Settings	Sets Default Settings	(1 to confirm, 0 to cancel)	-
8.	Firmware Upgrade	Mass Storage Device Firmware Upgrade	(1 to confirm, 0 to cancel)	-
9.	Diagnostics	Input states	-	-
0.	Exit	Exit and disconnect	-	-

## Protocol simulator

After entering diagnostics screen, user can turn on protocol simulator by pressing [9]. When protocol simulator is turned on, device will communicate through USB port rather than RS-485 line. Communication on RS-485 line is closed and all Modbus commands will be accepted only from USB. To exit this mode user must restart device.

## Firmware upgrade over USB



It is recommended to close terminal window when entered firmware upgrade mode.



Fig. 6.5. Reconnecting as a mass storage device

User then must delete existing file “firmware.bin”, and simply upload new firmware file by drag and drop.



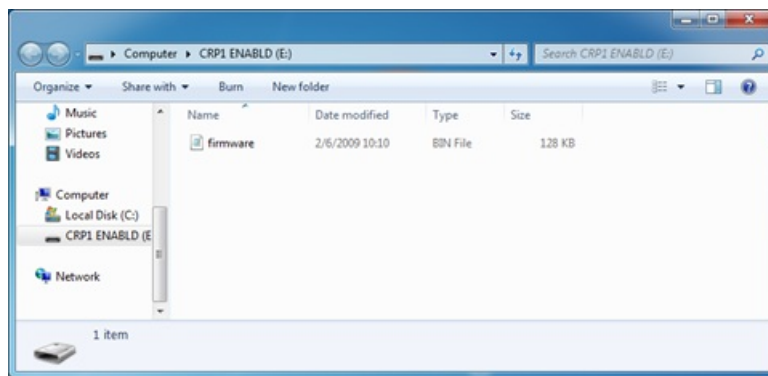


Fig. 6.6

Reconnect device, check firmware version and **set default settings**.

# IOMOD 16DI User Manual IEC 60870-5-103

## Introduction

IOMOD 16DI is small sized stand-alone Modbus (RTU) or IEC 60870-5-103 digital input controller. IOMOD is used for industrial applications, where digital signaling is used and robust communication is needed. IOMOD is an ideal solution for applications such as data acquisition, observation, control, process monitoring, testing and measurement at remote places. It is controlled over Modbus or IEC 60870-5-103 protocol, and can be used with any SCADA system.

## Features

- 16 digital inputs;
- Configurable active input signal polarity or input inversion;
- Galvanically isolated inputs;
- Configuration over USB console;
- Drag and Drop firmware upgrade over USB mass storage;
- Modbus, IEC-60870-5-103 communication over RS485;
- Values with data and time information;
- Time synchronization over IEC-60870-5-103;
- Software selectable termination resistor on RS485;
- LED indication for input and data transmission;
- Easy integration with WCC Lite gateway and CloudIndustries.eu platform

## Operational information

IOMOD 16DI uses Modbus (RTU) or IEC 60870-5-103 protocol over RS485 interface. Protocol used by device can be changed by uploading a corresponding firmware. Default communication settings are: 9600 baud rate, 8N1, Slave address - 1.

### Status LED

Status LED can be in 2 colors :

Blue - Device connected to USB.

Green - Normal operation.

### Rx/Tx LED

The RX/TX LED on the IOMod flashes when data is either being transmitted or received via the RS485 port.

## IEC 60870-5-103 description

### Initialization:

IOMOD uses a standard IEC-60870-5-103 communication scheme. Initiation, control messages and queries are initiated by the master (controlling station), while IOMOD device (controlled station) only answers these requests. Therefore, the first message should be sent by master to start/restart communication (RESET CU or LINK RESET FCB). This message is answered by IOMOD with an acknowledgement (ACK) to enable master to proceed with sending other messages defined by IEC-60870-5-103 protocol. Other messages are ignored until a successful initialization has taken place.

IOMOD 8DI8DO configuration can be changed over USB interface with terminal console like PuTTY or similar.

### Data polling:

When initialization is complete, master may poll IOMOD device with both Class 1 and Class 2 requests. Class 2 is used when master polls for a cyclic data. Controlled device answers with a message containing Access Demand flag when spontaneous data exists and master then sends request for Class 1. IOMOD would then respond with time-tagged message.

On first Class 1 request IOMOD device always asks for the Access Demand to send an identification string. However, if there are spontaneous messages to be sent, they will be sent before the identification string.

### Input messages:

When input status changes, IOMOD device filters input glitches through filters with a user configurable filter time. When the filter is passed device sends “Spontaneous” message with “Function type” as input address (default function type of inputs – 160), and “Info number” as input pin number. Please note that spontaneous messages are answered with a four-byte time structure not containing date info. Controlling station should therefore be able to handle the signals sent before the start of a new day.

### Time synchronization:

To initiate the time synchronization between devices master must send variable frame, with function code “User data with ACK”, ASDU type “6” and Cause of Transmission “8”. Info elements must contain the 7-byte time structure.

As per IEC-60870-5-103 protocol specification time synchronization can be completed for multiple devices using broadcasting messages. It is included in IEC-60870-5-103 firmware since version 1.7.3. To broadcast time synchronization message, link address should be equal to 255.

### General interrogation:

General Interrogation (GI) is initiated by the master with variable frame, including function code “3” (User data with ACK), ASDU type “7” and Cause of Transmission “9”. Slave device then responds with an acknowledgement (ACK). Master gets GI data by polling with Class 2 request till slave transmits “End of GI” (Cause of Transmission – “10”). IOMOD device responds with a time-tagged message, including DPI states of inputs and outputs (Outputs are sent first). Output and input numbers are represented by “Info number” in protocol.

## Device configuration

### Input inversion and polarity selection:

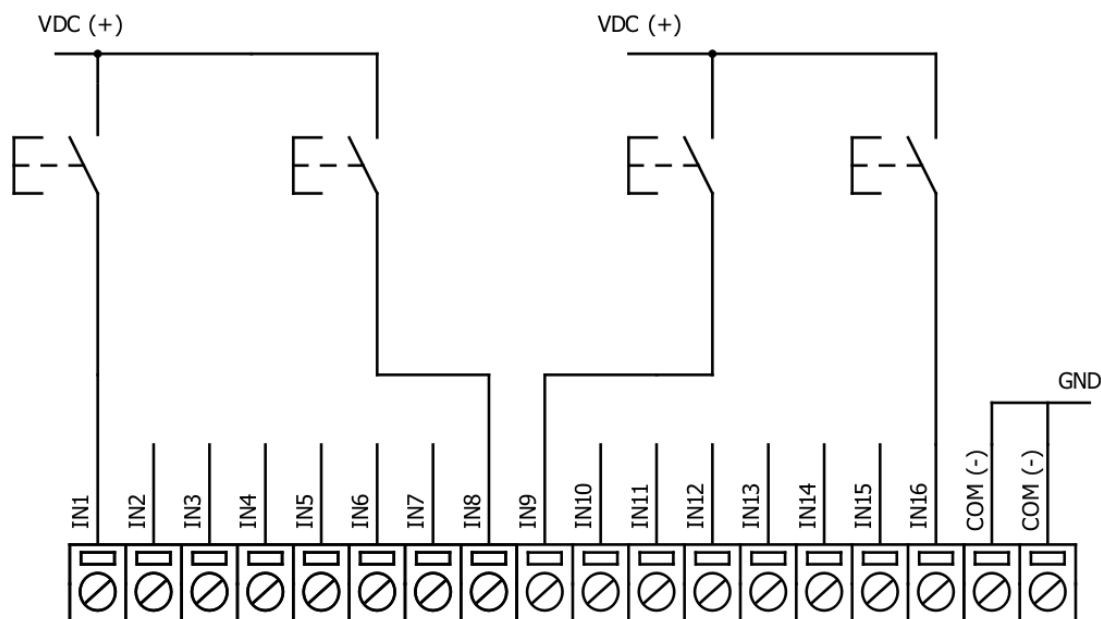
Input polarity selection (active signal selection) is done by connecting appropriate supply to COM pin. Further explained in section 5: Mounting and installation guide.

Input inversion does logical inversion of signals.

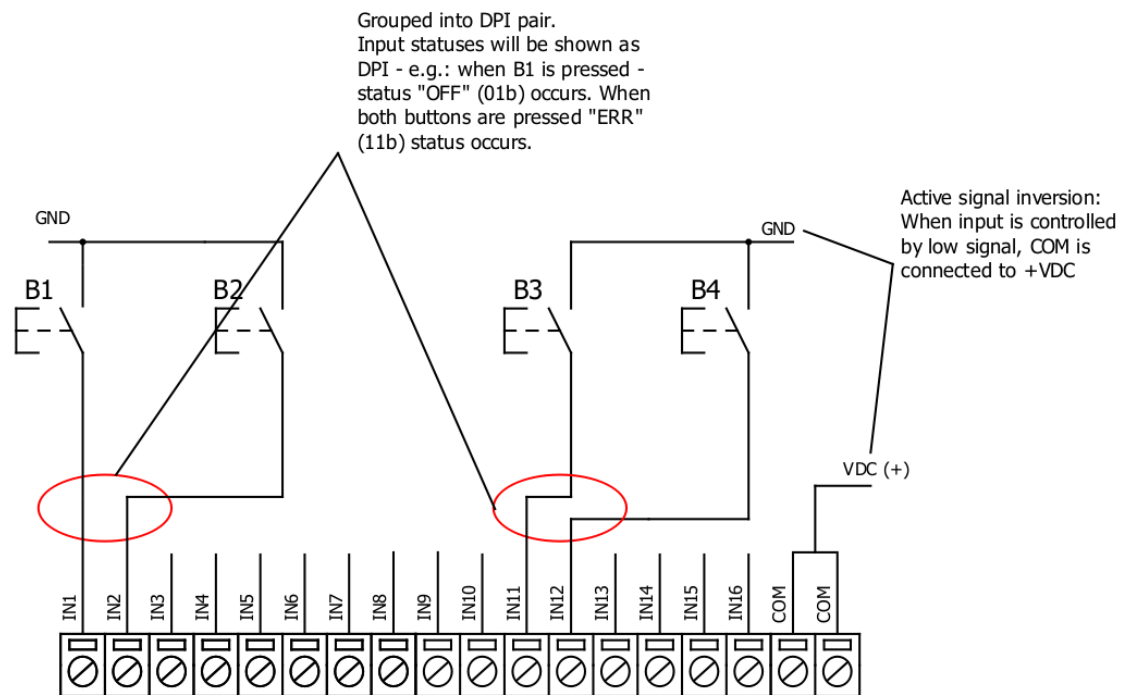
### Input grouping:

Sometimes two inputs must be captured as one DPI input. Inputs can be grouped into pairs of two. Only two neighbour pins can be grouped into pair, while first pin in pair must be an odd number pin. When grouped, second pin in the pair is not used anymore – all request to this pin generate an error. For example – IN1 and IN2 can be grouped, after that IN2 is not used; IN2 and IN3 *cannot* be grouped; IN3 and IN4 can be grouped, but IN4 is not used, etc.

Fig. 3.1 shows inputs ungrouped and controlled independently. In this mode, General Interrogation will be composed of 16 input states. Notice  $+V_{IO}$  and  $-V_{IO}$  connection: when COM is connected to negative power supply voltage, inputs are controlled by positive voltage.



In addition to this, Fig. 3.2 shows  $I^t + 2^{nd}$  and  $11^{th} + 12^{th}$  inputs are grouped into pair. Now, General Interrogation will be composed of 14 input states (with IN2 and IN12 missing). Input numbers is represented by “Info number” in protocol. Here, COM is connected to positive voltage of power supply and inputs are controlled by negative voltage.



### Input filter:

Input filter is a simple input glitch filter with a time input. This filter time corresponds to time that input must achieve without changing state before sending status change.

### Addressing configuration:

Devices Input address is configurable. This addresses in IEC 60870-5-103 protocol is considered as "Function Type". Input address is 160 by default.

Device is addressed in the line as "Link address", which is 1 by default.

## Testing With "THE VINCI" software

To test IOMOD with default settings, user connects device through RS485 to IEC 60870-5-103 master. Example using "The Vinci Expert" as serial interface converter and adapter to PC with "The Vinci" software. When opening "The Vinci" software, choose IEC 60870-5-103 - Master mode. Initial settings - 9600 baud rate; 8 data, no parity, 1 stop bit. Press Start, send Time synchronization, General interrogation and go to the "Statistic" tab:

As seen in Fig. 3.3, Inputs are shown with info numbers 1-16, function type - 160.

General Interrogation, Time Synchronization options can be found at right side of the program, in the "System" tab.



THE VINCI PROTOCOL ANALYZER									
File Tags Options Help									
<div>  <div> Protocol: IEC 60870-5-103 Mode: Master </div> <div>Stop</div> <div> Port A: COM39 Baudrate: 9600 Format: even,8,1 </div> <div> Extra Set VINCI ports </div> </div>									
Settings	Console	Events	Statistic	The Vinci Expert					
TI	Cause	ASDU	FUN	INF	Value	Status	TimeTag	Count	Name
(TI=005)	Start/restart	1	255	1 (0)	2	ASC=IOMOD16I ... -		0	-
(TI=008)	End of g. int	1	255	0 (0)	SCAN:0	-	-	3	-
(TI=001)	General inter	1	160	1 (0)	OFF[01]	SIN=0	[W]2017.03.20 15:21:53.973	0	-
(TI=001)	General inter	1	160	2 (0)	OFF[01]	SIN=1	[W]2017.03.20 15:21:54.082	0	-
(TI=001)	General inter	1	160	3 (0)	OFF[01]	SIN=2	[W]2017.03.20 15:21:54.189	0	-
(TI=001)	General inter	1	160	4 (0)	OFF[01]	SIN=3	[W]2017.03.20 15:21:54.296	0	-
(TI=001)	General inter	1	160	5 (0)	OFF[01]	SIN=4	[W]2017.03.20 15:21:54.403	0	-
(TI=001)	General inter	1	160	6 (0)	OFF[01]	SIN=5	[W]2017.03.20 15:21:54.510	0	-
(TI=001)	General inter	1	160	7 (0)	OFF[01]	SIN=6	[W]2017.03.20 15:21:54.617	0	-
(TI=001)	General inter	1	160	8 (0)	OFF[01]	SIN=7	[W]2017.03.20 15:21:54.724	0	-
(TI=001)	General inter	1	160	9 (0)	OFF[01]	SIN=8	[W]2017.03.20 15:21:54.831	0	-
(TI=001)	General inter	1	160	10 (0)	OFF[01]	SIN=9	[W]2017.03.20 15:21:54.938	0	-
(TI=001)	General inter	1	160	11 (0)	OFF[01]	SIN=10	[W]2017.03.20 15:21:55.045	0	-
(TI=001)	General inter	1	160	12 (0)	OFF[01]	SIN=11	[W]2017.03.20 15:21:55.152	0	-
(TI=001)	General inter	1	160	13 (0)	OFF[01]	SIN=12	[W]2017.03.20 15:21:55.259	0	-
(TI=001)	General inter	1	160	14 (0)	OFF[01]	SIN=13	[W]2017.03.20 15:21:55.367	0	-
(TI=001)	General inter	1	160	15 (0)	OFF[01]	SIN=14	[W]2017.03.20 15:21:55.475	0	-
(TI=001)	General inter	1	160	16 (0)	OFF[01]	SIN=15	[W]2017.03.20 15:21:55.583	0	-

Fig. 3.4 shows 1<sup>st</sup> + 2<sup>nd</sup>, 5<sup>th</sup> + 6<sup>th</sup> and 11<sup>th</sup> + 12<sup>th</sup> inputs grouped (notice order of info numbers). These pairs are shown INTERM (00) because both inputs of pair are off (giving binary representation of 00b).

THE VINCI PROTOCOL ANALYZER									
File Tags Options Help									
<div>  <div> Protocol: IEC 60870-5-103 Mode: Master </div> <div>Stop</div> <div> Port A: COM39 Baudrate: 9600 Format: even,8,1 </div> <div> Extra Set VIN </div> </div>									
Settings	Console	Events	Statistic	The Vinci Expert					
TI	Cause	ASDU	FUN	INF	Value	Status	TimeTag	Count	Name
(TI=005)	Start/restart	1	255	1 (0)	2	ASC=IOMOD16I ... -		0	-
(TI=008)	End of g. int	1	255	0 (0)	SCAN:0	-	-	3	-
(TI=001)	General inter	1	160	1 (0)	INTERIM[00]	SIN=0	[W]2017.03.20 15:25:42.960	0	-
(TI=001)	General inter	1	160	3 (0)	OFF[01]	SIN=2	[W]2017.03.20 15:25:43.067	0	-
(TI=001)	General inter	1	160	4 (0)	OFF[01]	SIN=3	[W]2017.03.20 15:25:43.174	0	-
(TI=001)	General inter	1	160	5 (0)	INTERIM[00]	SIN=4	[W]2017.03.20 15:25:43.281	0	-
(TI=001)	General inter	1	160	7 (0)	OFF[01]	SIN=6	[W]2017.03.20 15:25:43.396	0	-
(TI=001)	General inter	1	160	8 (0)	OFF[01]	SIN=7	[W]2017.03.20 15:25:43.503	0	-
(TI=001)	General inter	1	160	9 (0)	OFF[01]	SIN=8	[W]2017.03.20 15:25:43.609	0	-
(TI=001)	General inter	1	160	10 (0)	OFF[01]	SIN=9	[W]2017.03.20 15:25:43.716	0	-
(TI=001)	General inter	1	160	11 (0)	INTERIM[00]	SIN=10	[W]2017.03.20 15:25:43.823	0	-
(TI=001)	General inter	1	160	13 (0)	OFF[01]	SIN=12	[W]2017.03.20 15:25:43.930	0	-
(TI=001)	General inter	1	160	14 (0)	OFF[01]	SIN=13	[W]2017.03.20 15:25:44.037	0	-
(TI=001)	General inter	1	160	15 (0)	OFF[01]	SIN=14	[W]2017.03.20 15:25:44.144	0	-
(TI=001)	General inter	1	160	16 (0)	OFF[01]	SIN=15	[W]2017.03.20 15:25:44.251	0	-

# Technical information

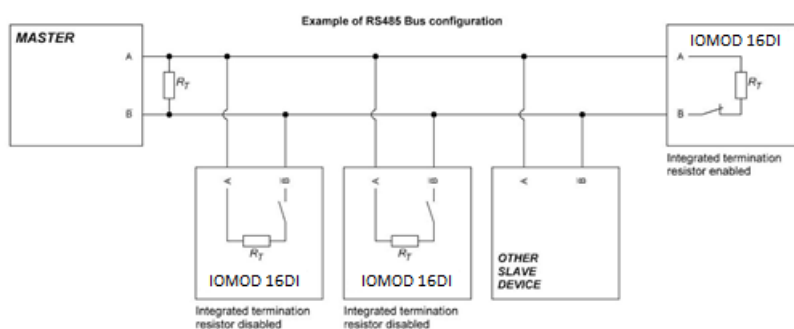
System	
Dimensions	101 x 119 x 17.5, mm
Case	IP20, blend PC/ABS self-extinguishing, black

Working environment	Indoors
Operating temperature	-40 , +85°C
Humidity	5-95% RH (non-condensing)
Configuration	USB – serial console
Firmware upgrade	USB – mass storage device
<b>Electrical specifications</b>	
Inputs	16 X 3kV isolated 12-24VDC; Selectable inversion.
<b>Power</b>	
Power Supply	9V to 33V
Current consumption	130 mA

# Mounting and installation guide

## IOMOD 16DI RS485 interface

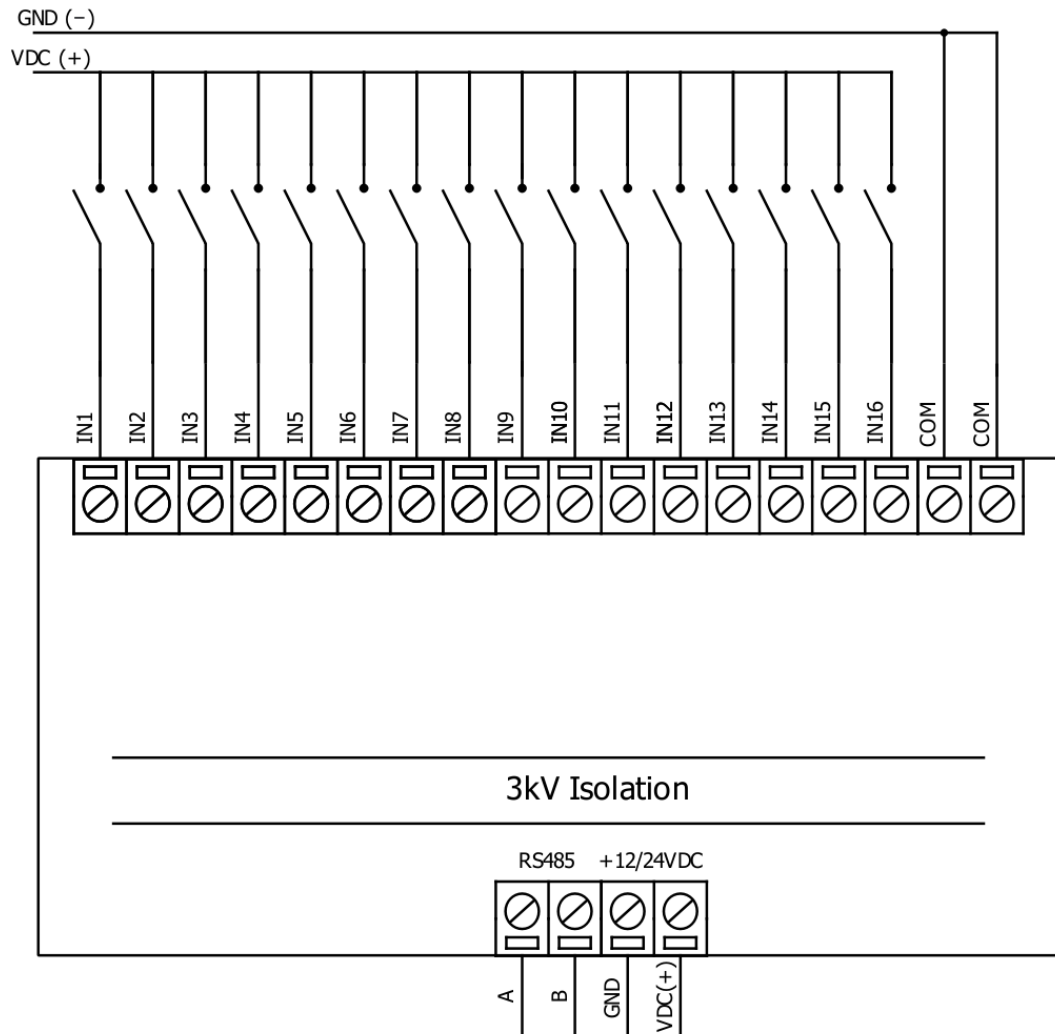
IOMOD 16DI has an integrated 120Ω termination resistor which can be enabled or disabled over USB configuration. It is recommended to use termination at each end of the RS485 cable. See typical connection diagram on Fig. 5.1.



IOMOD 16DI has 1/8 Unit load receiver which allows to have up to 256 units on line (compared to standard 32 units). To reduce reflections, keep the stubs (cable distance from main RS485 bus line) as short as possible when connecting device.

## IOMOD 16DI inputs

Typical application of IOMOD 16DI inputs is shown on Fig. 5.2. When default configuration for inputs is applied, user will see inputs connected to +12-24V as “high” or state “1” and input status LED will glow.

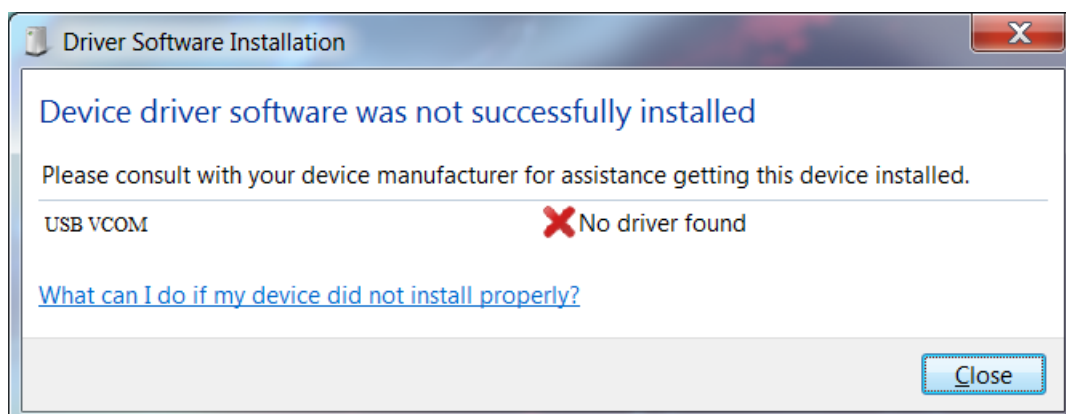


User also can configure to enable pull-up resistors (function is applied for all inputs) and software input inversion. With this configuration, user will see inputs connected to 0V (see Fig. 5.3) as “high” or state “1”, input status LED will NOT glow

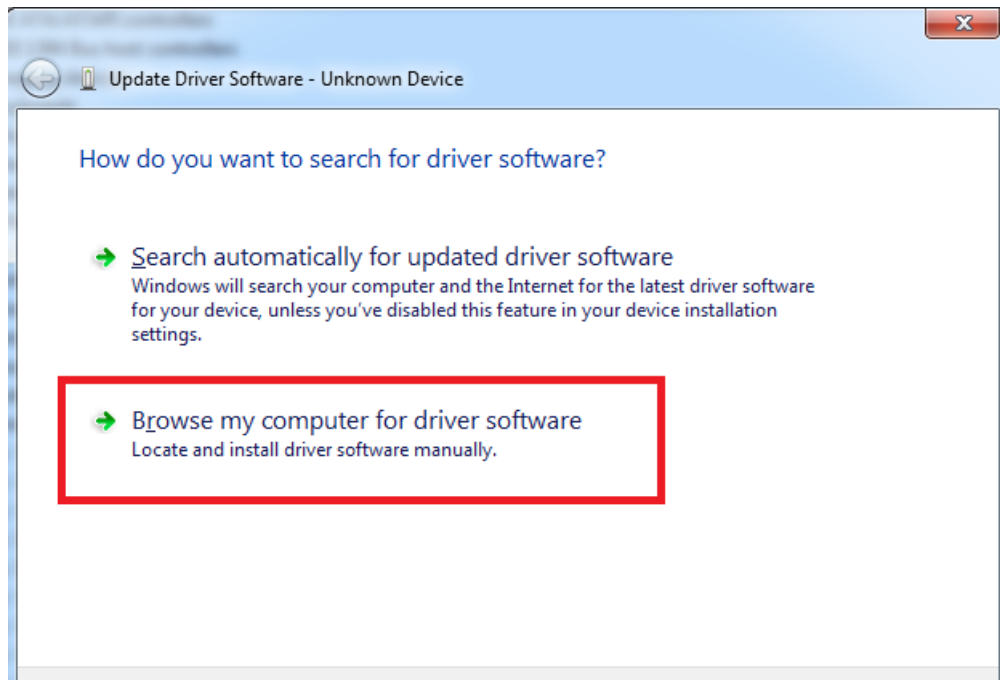
# Configuration over USB

## Driver installation

Device requires USB drivers to work as a Virtual COM port. First-time connection between device and computer could result in “Device driver software was not successfully installed” error.



User then manually installs drivers by selecting downloaded driver folder:  
Go to Control Panel -> Device Manager;  
Select failed device;  
Press "Update driver software"; following screen should appear:



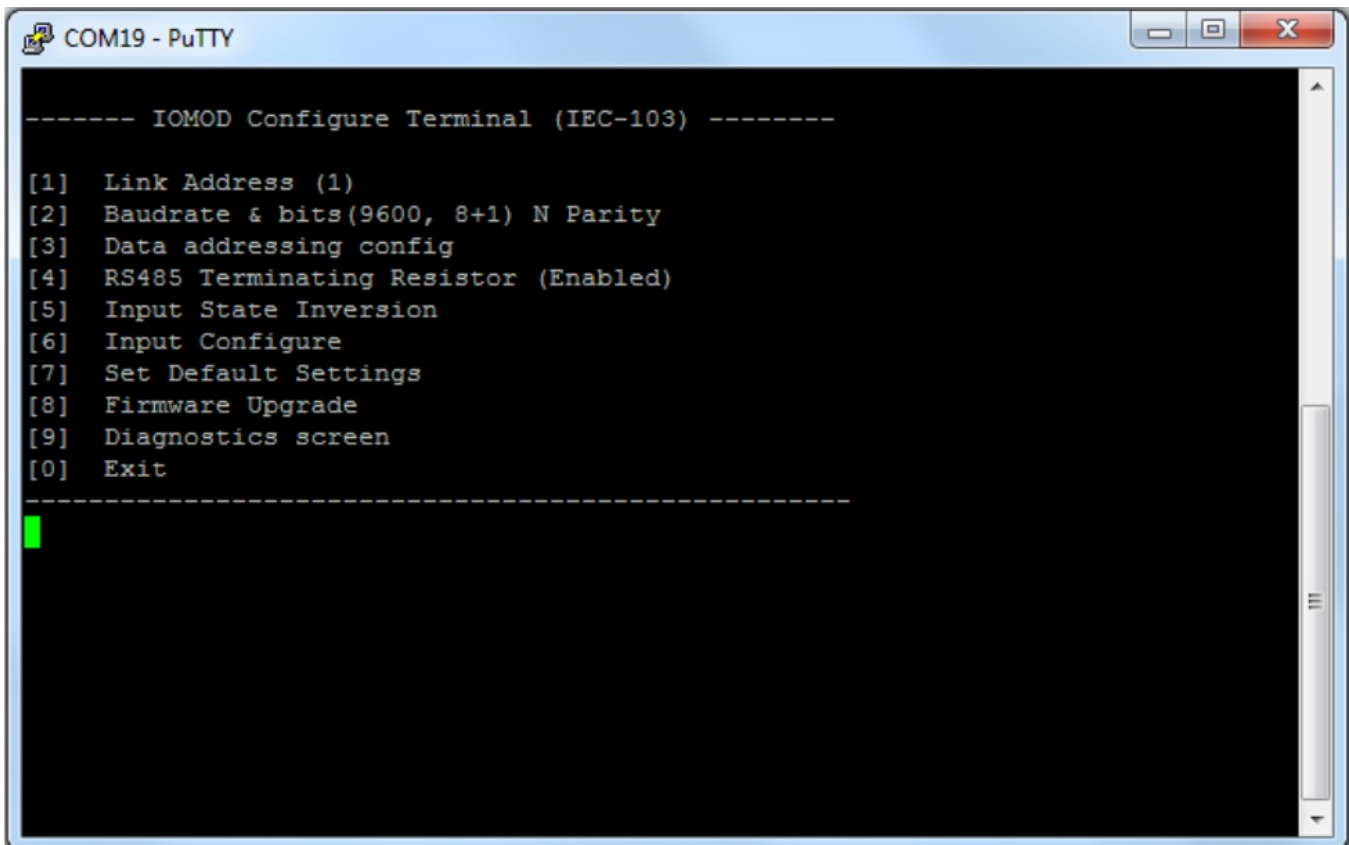
Select "x86" driver for 32bit machine, or x64 for 64bit machine. If not sure, select root folder (folder in which x64 and x86 lays inside).

Library ▾ Share with ▾ Burn New folder				
Name	Date modified	Type	Size	
x64	11/24/2015 15:20	File folder		
x86	11/24/2015 15:20	File folder		
lpc-vcom	12/5/2014 20:46	Security Catalog	7 KB	
lpc-vcom	11/21/2014 23:20	Setup Information	3 KB	

## IOMOD configuration with PuTTY terminal

Configuration of IOMOD device is done through CLI (Command Line Interface) on virtual COM port. Drivers needed for MS Windows to install VCOM will be provided. To open up CLI simply connect to specific V-COM port with terminal software (advised to use PuTTY terminal software. If other software is being used, user might need to send <return> symbol after each command). When connected user should immediately see main screen as in Fig. 6.4.

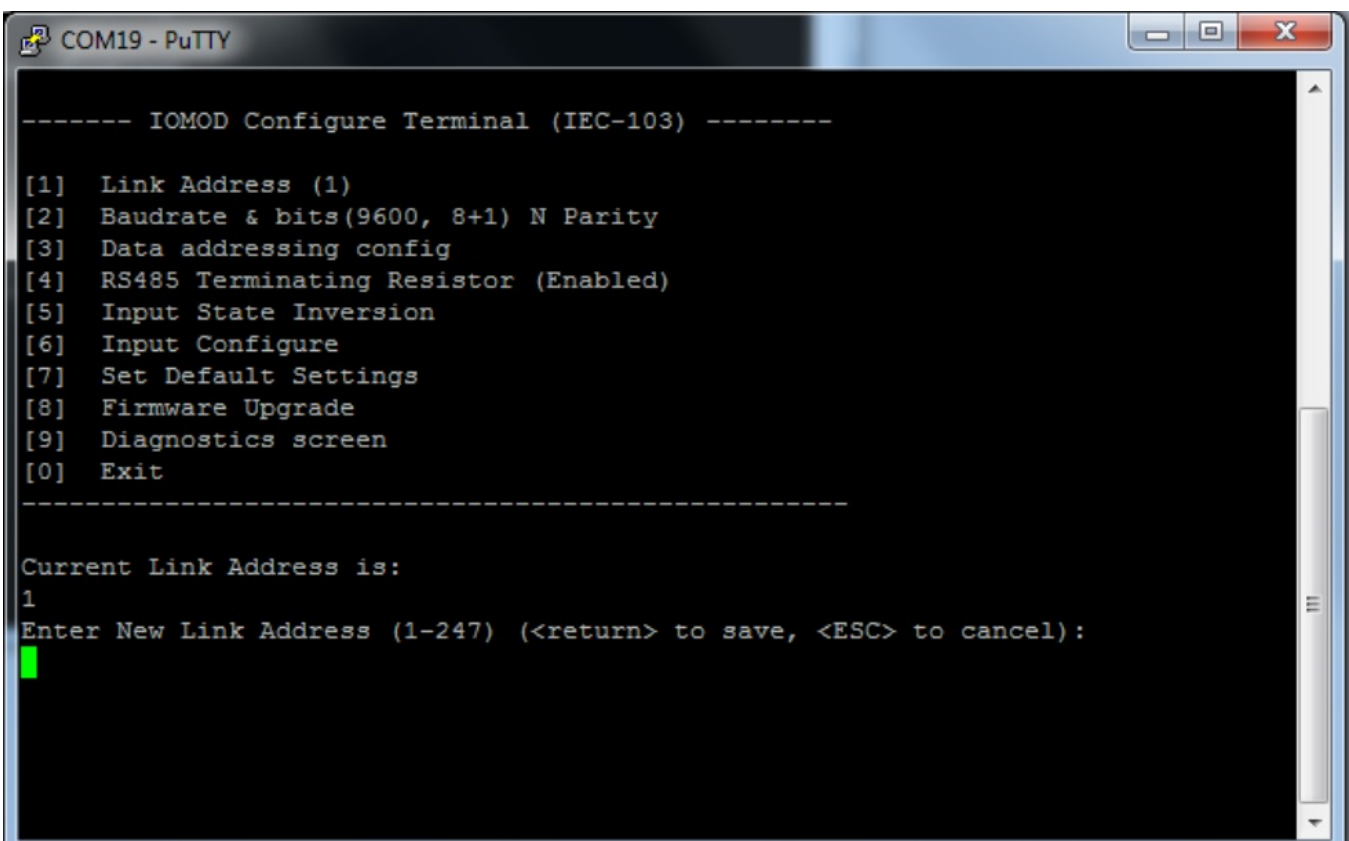




Navigation is performed by sending number to terminal. User then proceeds by following further on-screen instructions. For example, to set baud rate, press [2] to enter Baudrate screen; press [1] to edit; enter new configuration; press [RETURN] to save, or [ESC] to cancel changes. When done, press [0] (exit) before disconnecting device. Default values is set by pressing [6] on main screen, and confirming changes [1].

If accidentally closed the terminal window, user can connect terminal program again, and press any key on keyboard to show up main menu.

Main menu contains various possibilities of device configuration. A user can configure Link Address (Fig. 6.5), set communication settings (Fig. 6.6), change the input type (address) for input values (Fig. 6.7), change which input values are inverted (Fig. 6.8).



```
COM19 - PuTTY

----- IOMOD Configure Terminal (IEC-103) -----

[1] Link Address (1)
[2] Baudrate & bits(9600, 8+1) N Parity
[3] Data addressing config
[4] RS485 Terminating Resistor (Enabled)
[5] Input State Inversion
[6] Input Configure
[7] Set Default Settings
[8] Firmware Upgrade
[9] Diagnostics screen
[0] Exit

-----

Current Baudrate is:
9600
Data bits: 8 Stop bits: 1
[1] Set 8 Data bits + 1 Stop bit
[2] Set 8 Data bits + 2 Stop bit
[3] Configure Baudrate
[4] Configure Parity
[0] Back
```

```
COM19 - PuTTY

----- IOMOD Configure Terminal (IEC-103) -----

[1] Link Address (1)
[2] Baudrate & bits(9600, 8+1) N Parity
[3] Data addressing config
[4] RS485 Terminating Resistor (Enabled)
[5] Input State Inversion
[6] Input Configure
[7] Set Default Settings
[8] Firmware Upgrade
[9] Diagnostics screen
[0] Exit

-----

[1] Configure digital inputs' address [160]
[0] Back
```

```
COM19 - PuTTY

----- IOMOD Configure Terminal (IEC-103) -----

[1] Link Address (1)
[2] Baudrate & bits(9600, 8+1) N Parity
[3] Data addressing config
[4] RS485 Terminating Resistor (Enabled)
[5] Input State Inversion
[6] Input Configure
[7] Set Default Settings
[8] Firmware Upgrade
[9] Diagnostics screen
[0] Exit

-----

Input state inversion for individual pins.
Choose option and pin for which to apply it.
NOTE: Input inversion shall be set for individual pins
where grouped inputs are being used
[3] Choose pin
[0] Back

Write input number (1-16):
```

```
COM19 - PuTTY

----- Diagnostics Screen V1.7.3 -----

Input #1 state: 0-
Input #2 state: 0-
Input #3 state: 0-
Input #4 state: 0-
Input #5 state: 0-
Input #6 state: 0-
Input #7 state: 0-
Input #8 state: 0-
Input #9 state: 0-
Input #10 state: 0-
Input #11 state: 0-
Input #12 state: 0-
Input #13 state: 0-
Input #14 state: 0-
Input #15 state: 0-
Input #16 state: 0-

[] Refresh
[9] Enter USB protocol simulator mode
[0] Back
```

## Main Menu

	Menu Name	Function	Values	Default Values
--	-----------	----------	--------	----------------

	Menu Name	Function	Values	Default Values
1.	Link Address	Setts Link address	1-255	1
2.	Baudrate, Parity and stop bits	Enters configuring screen for communication settings	8+1 or 8+2 (Data+Stop), None, Odd, Even, Mark, Space (Parity)	9600, 8+1, Parity -None
3.	Data addressing config	Enters configuring screen for Input address (function type)	1 - 255	160
4.	RS485 Terminating Resistor	RS485 120 Ohms Terminating Resistor	0 - 1 (off/on)	1
5.	Input state inversion	Input inversion (Inverts input states in protocol logic)	0 - 1 (off/on)	0 (not inverted)
6.	Input configure	Enters screen for configuring (see 6.1 - 6.5 rows below)	-	-
6.1	Input grouping;	Groups or ungroups inputs	16 inputs ungrouped / 8 pairs grouped	All inputs ungrouped by default
6.2	Input filter time;	Input glitch filter - minimum stable time to detect input	1 - 60000 milliseconds	100

	Menu Name	Function	Values	Default Values
7.	Set Default Settings	Sets Default Settings	(1 to confirm, 0 to cancel)	-
8.	Firmware Upgrade	Mass Storage Device Firmware Upgrade	(1 to confirm, 0 to cancel)	-
9.	Diagnostics	Input states	-	-
0.	Exit	Exit and disconnect	-	-

## Protocol simulator

When entered diagnostics screen, user can turn on protocol simulator by pressing [9]. When protocol simulator is turned on, device will communicate through USB port rather than RS-485 line. Communication on RS-485 line is closed and all IEC-103 commands will be accepted only from USB. To exit this mode user must restart device.

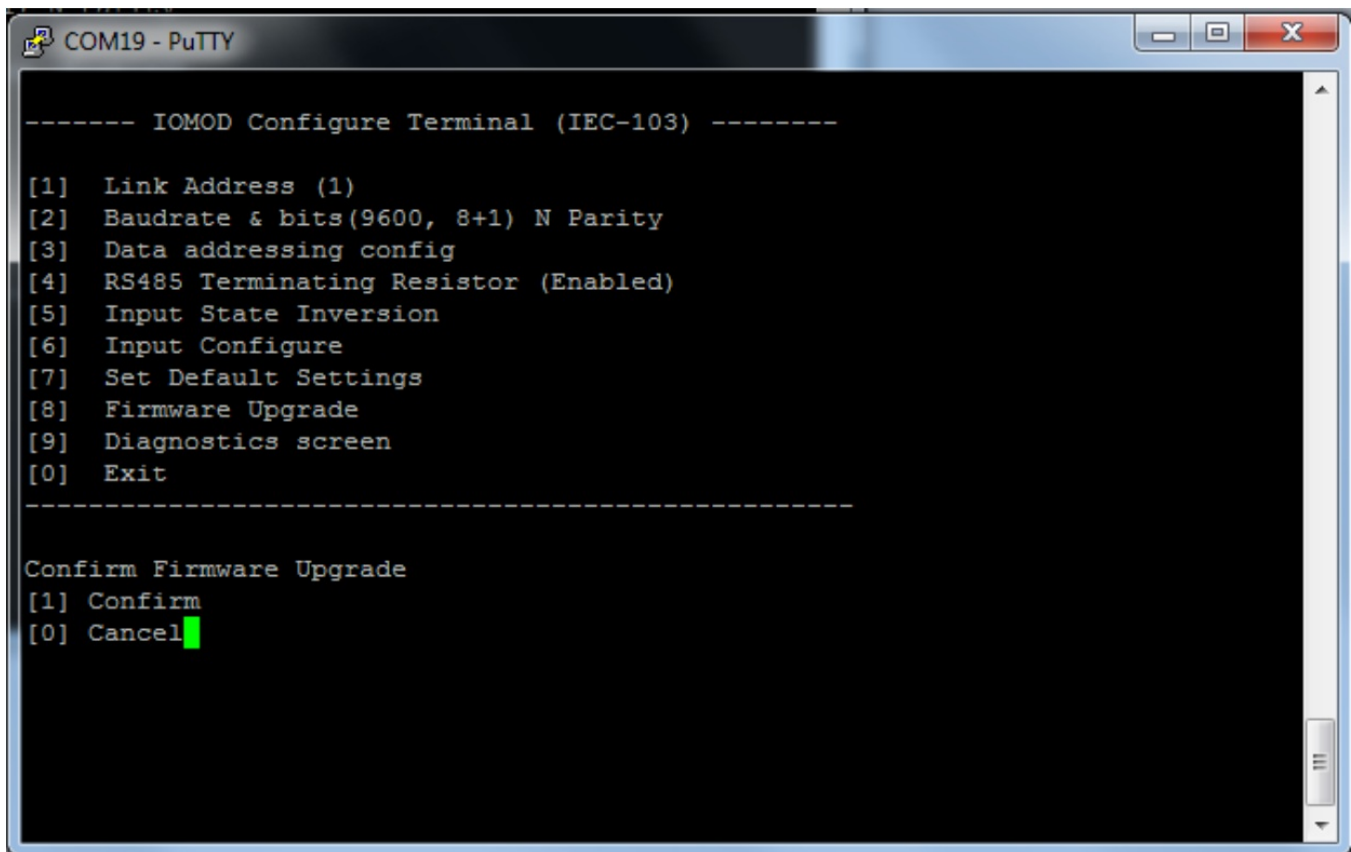
## Firmware upgrade over USB

To update device firmware user must enter main configuration menu.

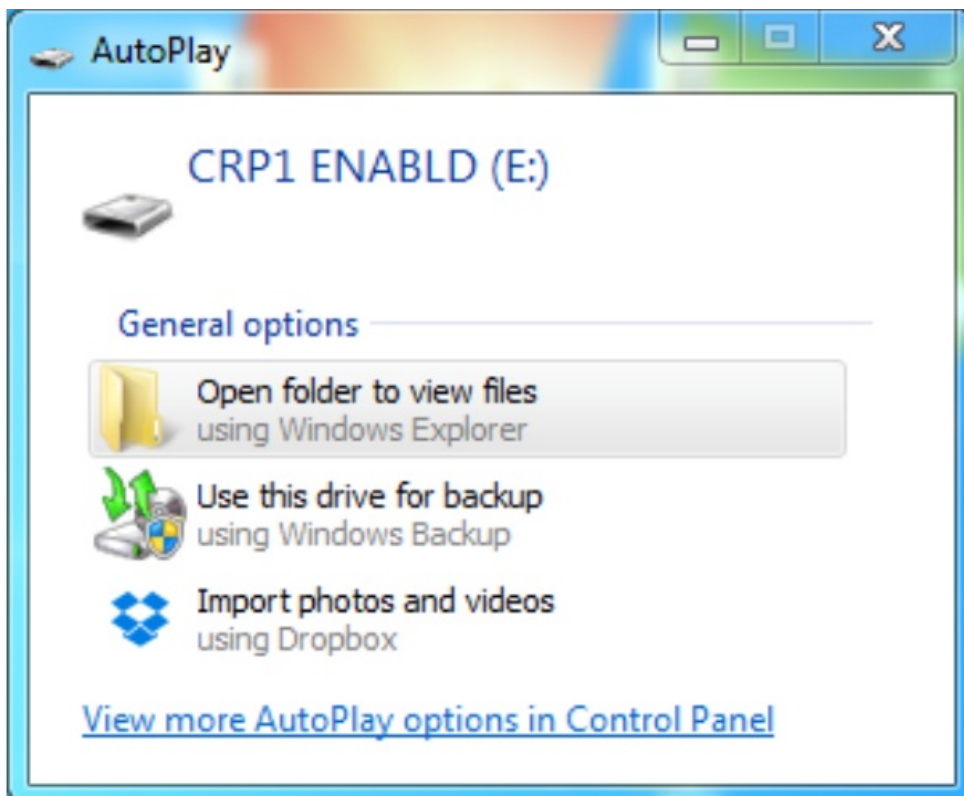
Enter Firmware update screen by pressing [4];

Confirm update by pressing [1];

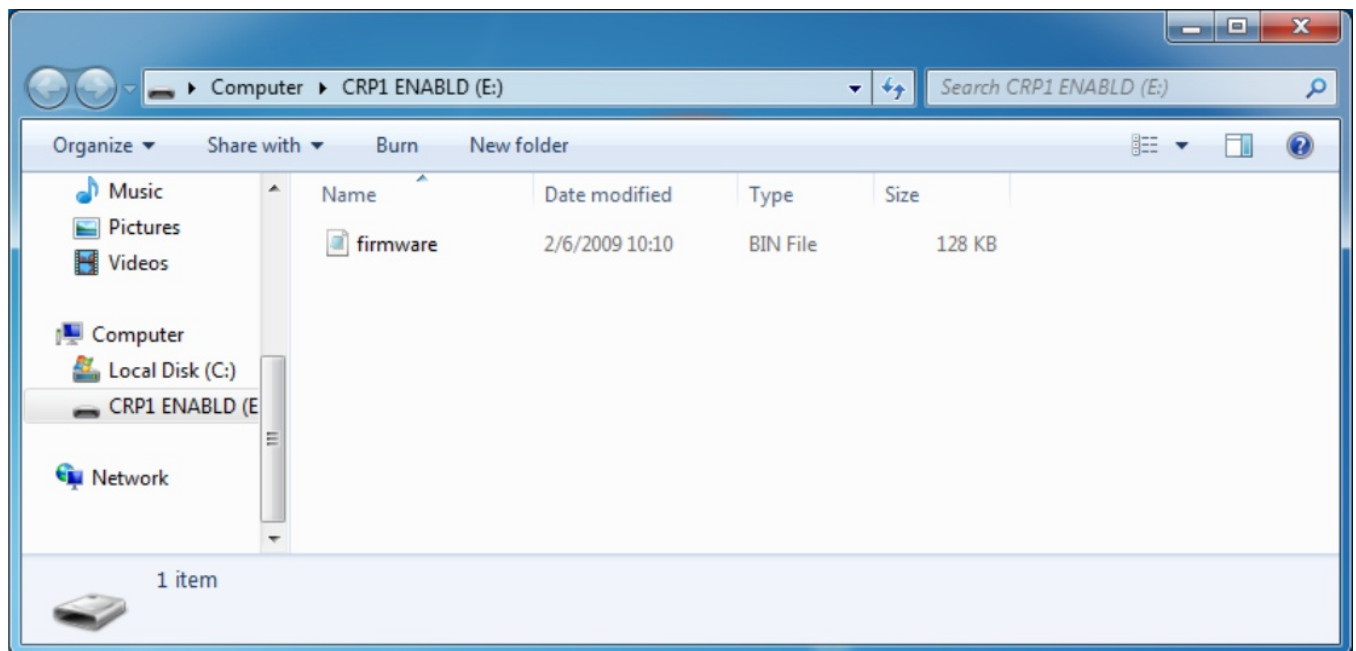
Device now enters Firmware Upgrade mode.



Device reconnects as mass storage device:



User then must delete existing file "firmware.bin", and simply drag and drop new firmware file.



Reconnect device, set default settings and check firmware version in Diagnostics screen.

# IOMOD 16DI User Manual IEC 60870-5-101

## Introduction

IOMOD 16DI is small sized stand-alone Modbus (RTU) or IEC 60870-5-101 digital input controller. IOMOD is used for industrial applications, where digital signaling is used and robust communication is needed. IOMOD is an ideal solution for applications such as data acquisition, observation, control, process monitoring, testing and measurement at remote places. It is controlled over Modbus or IEC 60870-5-101 protocol, and can be used with any SCADA system.

## Features

- 16 digital inputs;
- Configurable active input signal polarity or input inversion;
- Galvanically isolated inputs;
- Configuration over USB console;
- Drag and Drop firmware upgrade over USB mass storage;
- Modbus, IEC-60870-5-101 communication over RS485;
- Values with data and time information;
- Time synchronization over IEC-60870-5-101;
- Software selectable termination resistor on RS485;
- LED indication for input and data transmission;
- Easy integration with WCC Lite gateway and CloudIndustries.eu platform

## Operational information

IOMOD 16DI uses Modbus (RTU) or IEC 60870-5-101 protocol over RS485 interface. Protocol used by device can be changed by uploading a corresponding firmware. Default communication settings are: 9600 baud rate, 8E1, Link address - 1.

### Status LED

Status LED can be in 2 colors :

Blue - Device connected to USB.

Green - Normal operation.

### Rx/Tx LED

The RX/TX LED on the IOMod flashes when data is either being transmitted or received via the RS485 port.

## IEC 60870-5-101 description

### Initialization

IOMod uses a standard IEC-60870-5-101 communication scheme. Initiation, control messages, and queries are initiated by the master (controlling station), while the IOMod device (controlled station) only answers these requests. Therefore, the first message should be sent by the master to request status of link (function code = 9). This message is answered by IOMod with the status of link (function code = 11) if link is available. Otherwise there is going to be no response. After receiving the status of link the master will send Reset of remote link command (function code = 0) to restart the communication. The IOMod can respond with either acknowledgment (function code = 0, ACK) or Negative Acknowledgment (function code = 1, NACK). If IOMod respond is ACK then the initialization procedure is finished. The described procedure enables the master to proceed with sending other messages defined by the IEC-60870-5-101 protocol.

### Data polling

When initialization is complete, the master may request data from the IOMod device with general interrogation. Although according to the protocol specification IOMod will send data on value change. The 16DI IOMod responds with type 30 (M\_SP\_TB\_1) a single point value with a time tag.

### Input messages

When input status changes, IOMod device filters input glitches through filters with a user-configurable filter time. When the filter is passed device sends a "Spontaneous" message with the 30 data types (M\_SP\_TB\_1), and "IOA" as the input



pin number shifted by 16.

## Time synchronization

To initiate the time synchronization between devices the master must send a Clock Sync command. The command type is C\_CS\_NA\_1 (103) and the Cause of Transmission (COT) has to be 6. The command has to be sent to the correct link address and CASDU, which is the same as the link address by default. If the sent frame is correct the IOMod will respond with a C\_CS\_NA\_1 (103) type command with the COT (cause of transmission) of 7 and the **p/n** bit will be positive (0) also the command will be time-tagged with the **device** time. If the time synchronization feature is disabled or the command is sent to an undefined CASDU the response is the same except the **p/n** bit will be negative (1).

## General interrogation

General Interrogation (GI) is initiated by the master sending the General Interrogation command. The command type is C\_IC\_NA\_1 (100) and the Cause of Transmission (COT) has to be 6. The command has to be sent to the correct link address and CASDU, which is the same as the link address by default. If the sent frame is correct the IOMod will respond with a C\_IC\_NA\_1 (103) type command with the COT (cause of transmission) of 7 and the **p/n** bit will be positive (0). Otherwise, it will respond with the same command just that the **p/n** bit will be negative (1). Then the device will begin to send all of its data. After that's done the IOMOD will also send another 100 type command with the COT (cause of transmission) of 10 (ActTerm) meaning the general interrogation is over.

IOAs [1,16] - inputs

## Device configuration

### Input inversion and polarity selection:

Input polarity selection (active signal selection) is done by connecting appropriate supply to COM pin. Further explained in section 5: Mounting and installation guide.

Input inversion does logical inversion of signals.

### Input grouping:

Sometimes two inputs must be captured as one DPI input. Inputs can be grouped into pairs of two. Only two neighbor pins can be grouped into pair, while first pin in pair must be an odd number pin. When grouped, second pin in the pair is not used anymore – all request to this pin generate an error. For example – IN1 and IN2 can be grouped, after that IN2 is not used; IN2 and IN3 *cannot* be grouped; IN3 and IN4 can be grouped, but IN4 is not used, etc.

Fig. 1. shows inputs ungrouped and controlled independently. In this mode, General Interrogation will be composed of 16 input states. Notice  $+V_{IO}$  and  $-V_{IO}$  connection: when COM is connected to negative power supply voltage, inputs are controlled by positive voltage.

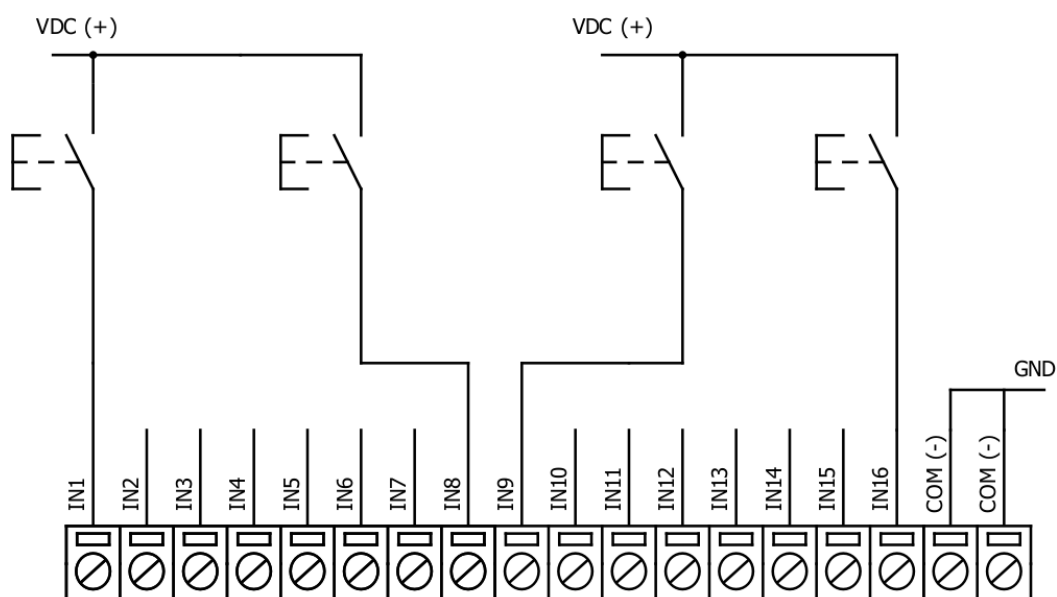


Fig. 1.

In addition to this, Fig. 2. shows  $1^{st} + 2^{nd}$  and  $11^{th} + 12^{th}$  inputs are grouped into pair. Now, General Interrogation will be composed of 14 input states (with IN2 and IN12 missing). Input numbers is represented by "Info number" in protocol. Here, COM is connected to positive voltage of power supply and inputs are controlled by negative voltage.

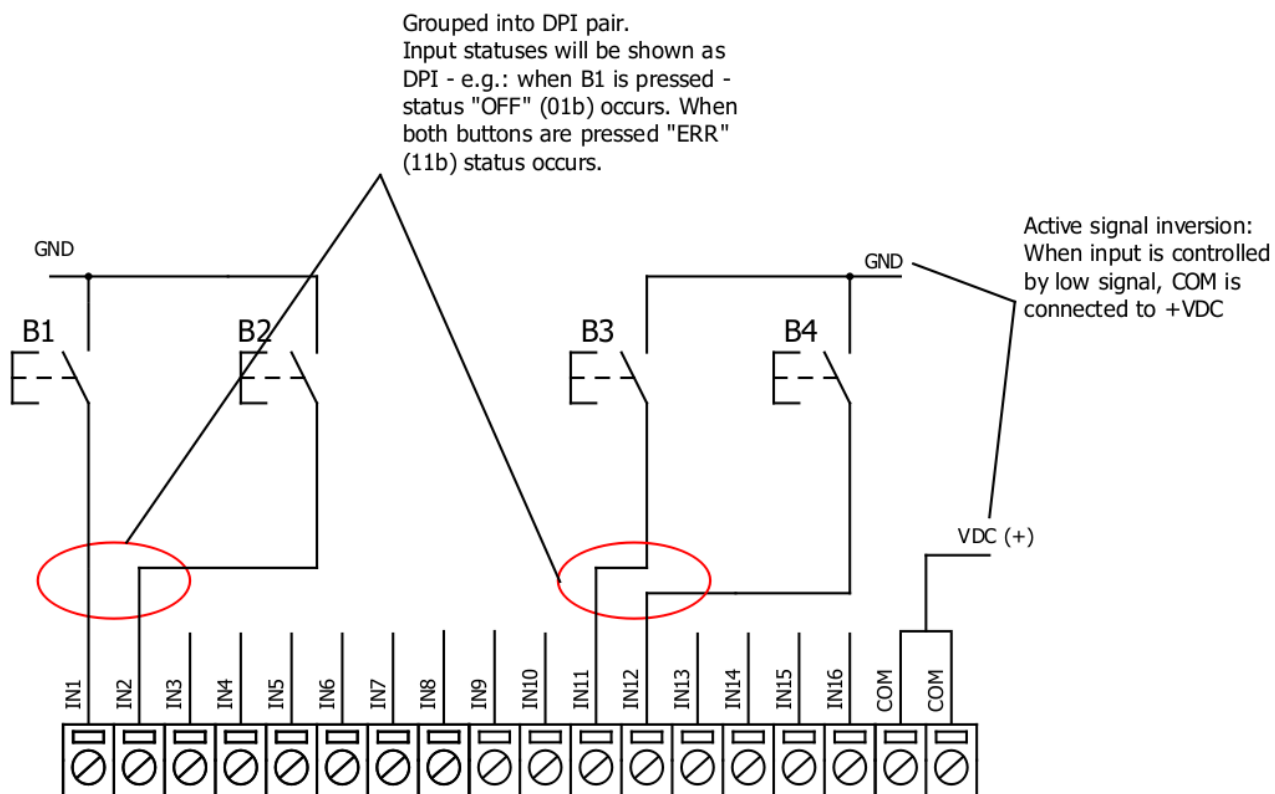


Fig. 2.

#### Input filter:

Input filter is a simple input glitch filter with a time input. This filter time corresponds to time that input must achieve without changing state before sending status change.

#### Addressing configuration:

Devices Input address is configurable. This addresses in IEC 60870-5-101 protocol is considered as "Function Type". Input address is 160 by default.

Device is addressed in the line as "Link address", which is 1 by default.

## Technical information

System	
Dimensions	101 x 119 x 17.5, mm
Case	IP20, blend PC/ABS self-extinguishing, black
Working environment	Indoors
Operating temperature	-40 , +85°C
Humidity	5-95% RH (non-condensing)
Configuration	USB – serial console
Firmware upgrade	USB – mass storage device
Electrical specifications	
Inputs	16 X 3kV isolated 12-24VDC; Selectable inversion.
Power	
Power Supply	9V to 33V
Current consumption	130 mA

## Mounting and installation guide

# IOMOD 16DI RS485 interface

IOMOD 16DI has an integrated 120Ω termination resistor which can be enabled or disabled over USB configuration. It is recommended to use termination at each end of the RS485 cable. See typical connection diagram on Fig. 3.

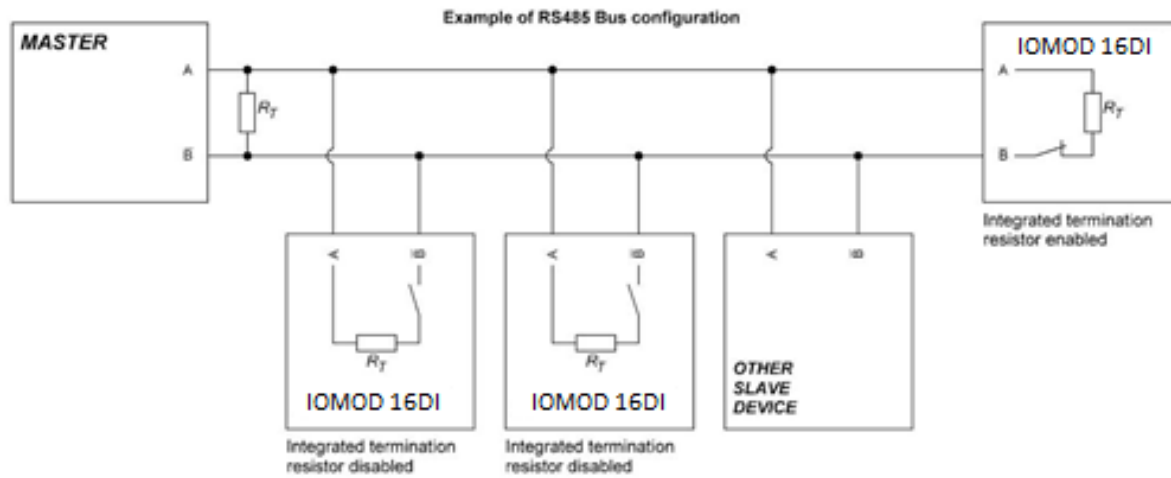


Fig. 3.

IOMOD 16DI has 1/8 Unit load receiver which allows to have up to 256 units on line (compared to standard 32 units). To reduce reflections, keep the stubs (cable distance from main RS485 bus line) as short as possible when connecting device.

## IOMOD 16DI inputs

Typical application of IOMOD 16DI inputs is shown on Fig. 4. When default configuration for inputs is applied, user will see inputs connected to +12-24V as "high" or state "1" and input status LED will glow.

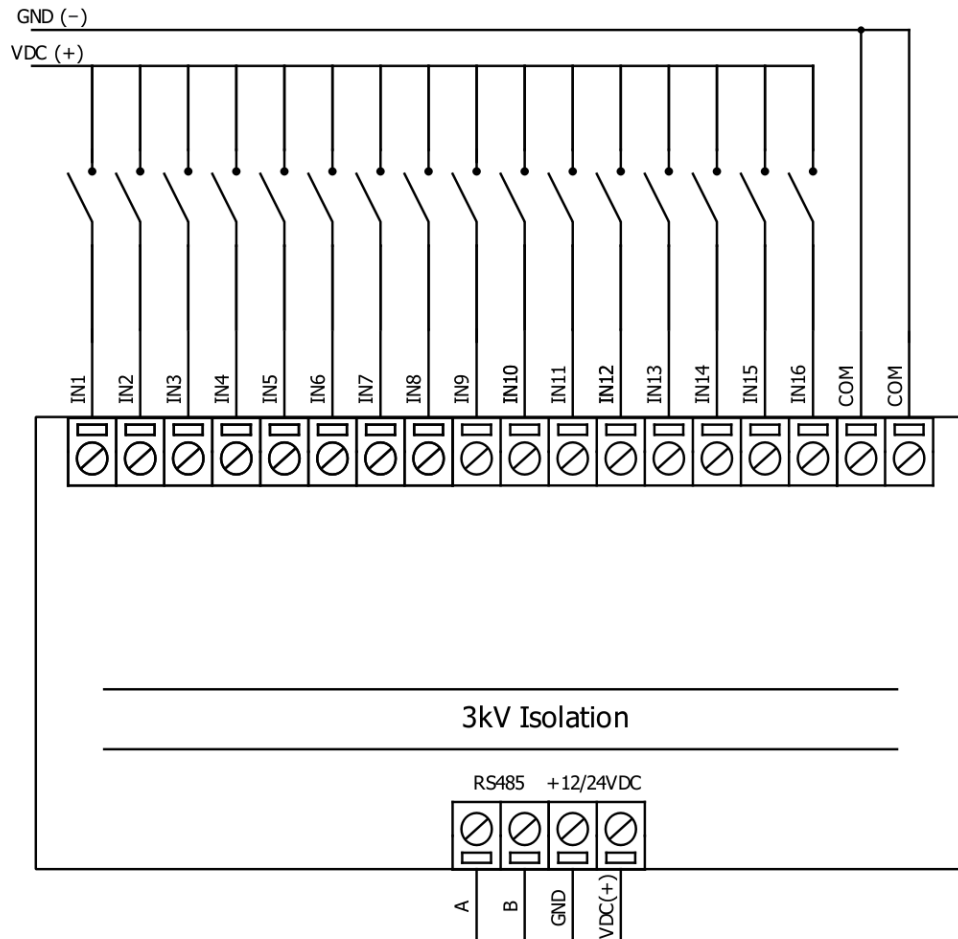


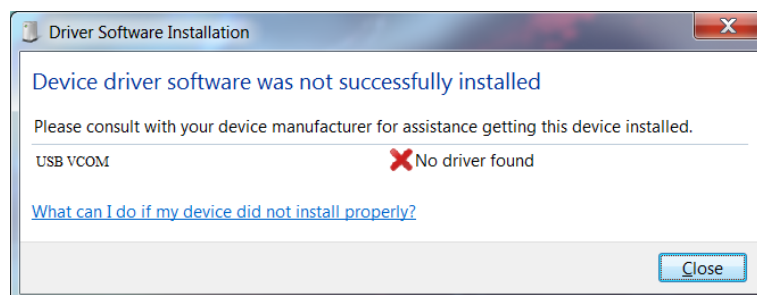
Fig. 4.

User also can configure to enable pull-up resistors (function is applied for all inputs) and software input inversion. With this configuration, user will see inputs connected to 0V as “high” or state “1”, input status LED will NOT glow

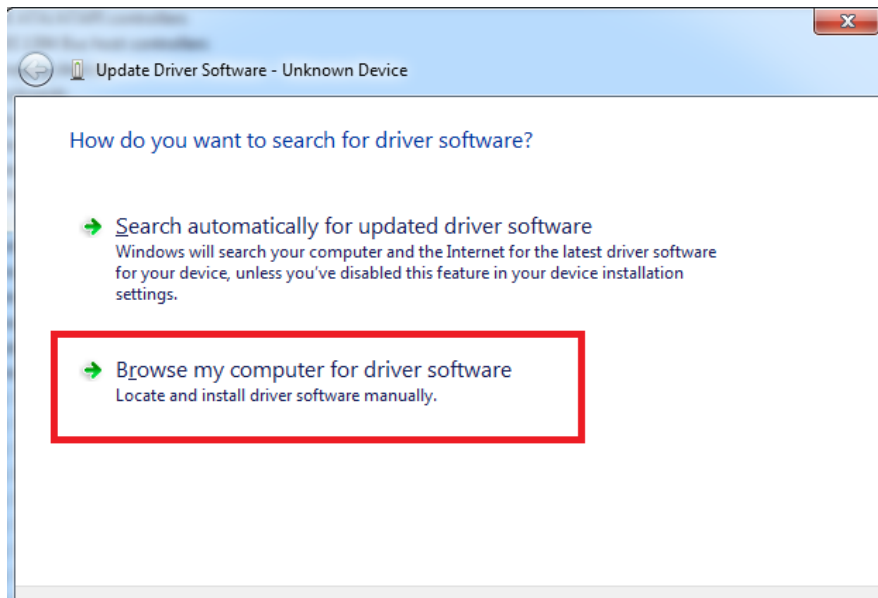
# Configuration over USB

## Driver installation

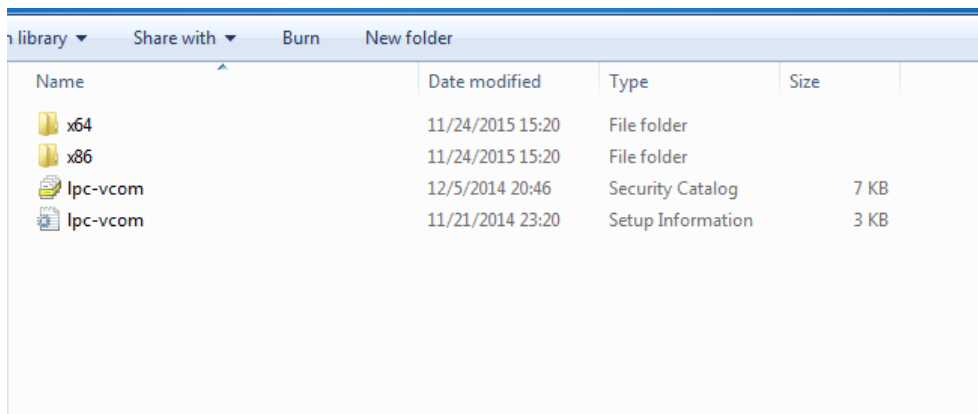
Device requires USB drivers to work as a Virtual COM port. First-time connection between device and computer could result in “Device driver software was not successfully installed” error.



User then manually installs drivers by selecting downloaded driver folder:  
Go to Control Panel -> Device Manager;  
Select failed device;  
Press “Update driver software”; following screen should appear:



Select “x86” driver for 32bit machine, or x64 for 64bit machine. If not sure, select root folder (folder in which x64 and x86 lays inside).



## IOMOD configuration with PuTTY terminal

Configuration of IOMOD device is done through CLI (Command Line Interface) on virtual COM port. Drivers needed for MS Windows to install VCOM will be provided. To open up CLI simply connect to specific V-COM port with terminal software (advised to use PuTTY terminal software. If other software is being used, user might need to send <return> symbol after each command). When connected user should immediately see main screen as in Fig. 5.

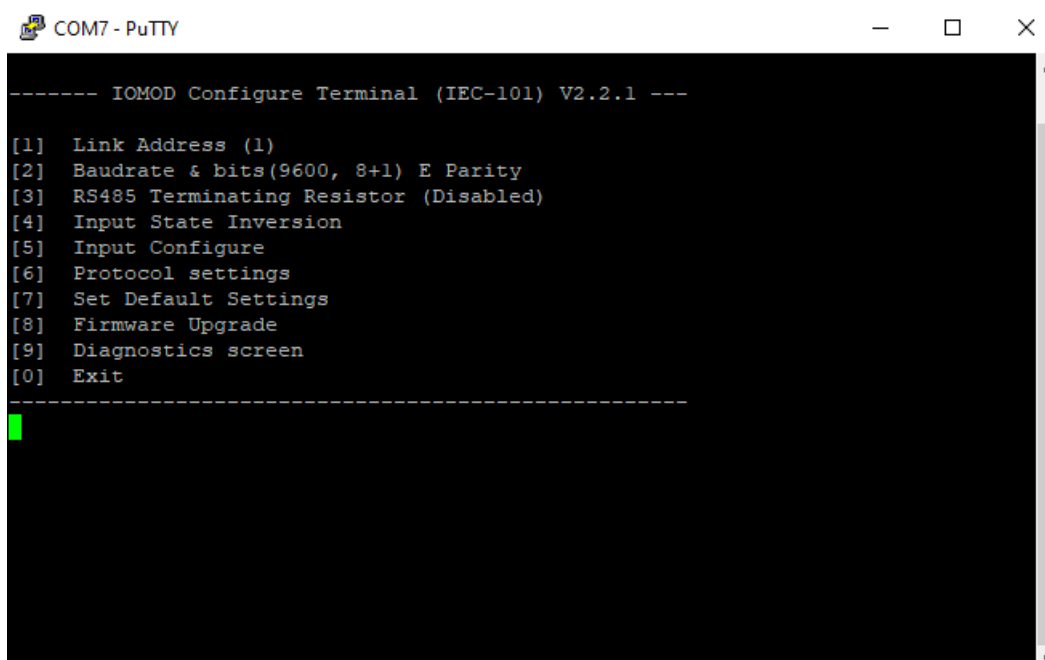
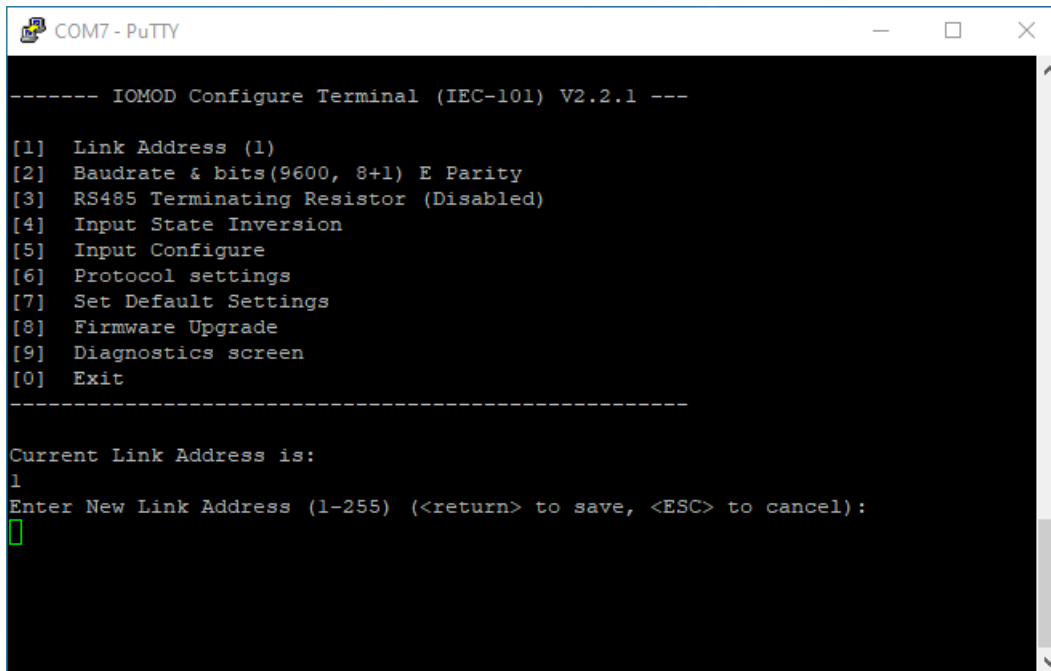


Fig.5

Navigation is performed by sending number to terminal. User then proceeds by following further on-screen instructions. For example, to set baud rate, press [3] to enter Baudrate screen; press [1] to edit; enter new configuration; press [RETURN] to save, or [ESC] to cancel changes. When done, press [0] (exit) before disconnecting device. Default values is set by pressing [7] on main screen, and confirming changes [1].

If accidentally closed the terminal window, user can connect terminal program again, and press any key on keyboard to show up main menu.

Main menu contains various possibilities of device configuration. A user can configure Link Address (Fig. 6.), set communication settings (Fig. 7.), change which input values are inverted (Fig. 8.). Fig. 9. shows diagnostics screen.



```
COM7 - PuTTY

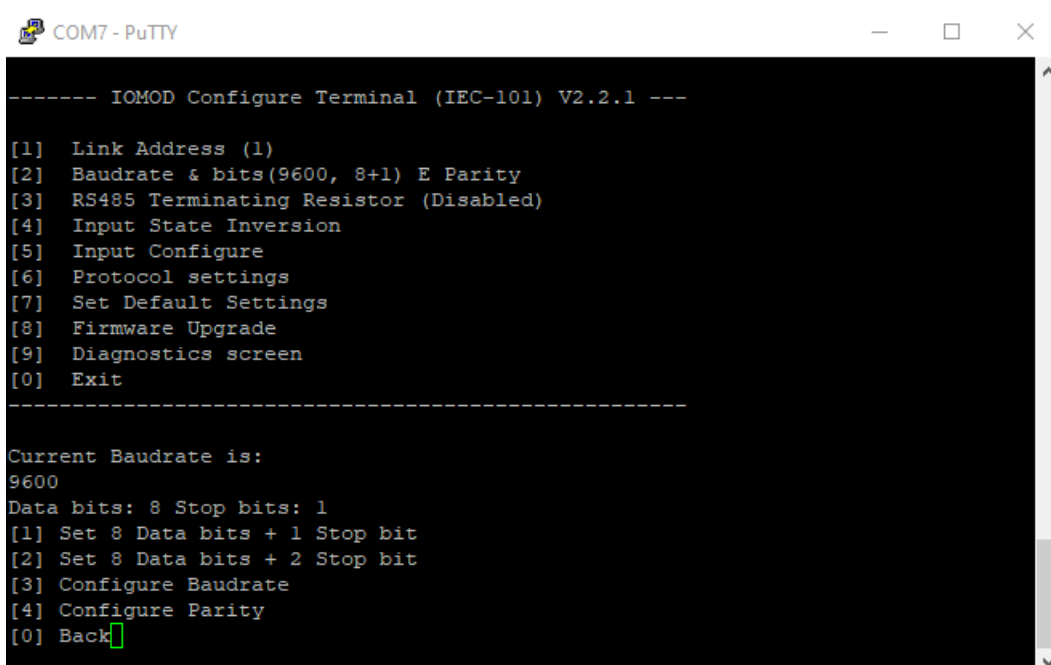
----- IOMOD Configure Terminal (IEC-101) V2.2.1 -----

[1] Link Address (1)
[2] Baudrate & bits(9600, 8+1) E Parity
[3] RS485 Terminating Resistor (Disabled)
[4] Input State Inversion
[5] Input Configure
[6] Protocol settings
[7] Set Default Settings
[8] Firmware Upgrade
[9] Diagnostics screen
[0] Exit

-----

Current Link Address is:
1
Enter New Link Address (1-255) (<return> to save, <ESC> to cancel):
█
```

Fig. 6.



```
COM7 - PuTTY

----- IOMOD Configure Terminal (IEC-101) V2.2.1 -----

[1] Link Address (1)
[2] Baudrate & bits(9600, 8+1) E Parity
[3] RS485 Terminating Resistor (Disabled)
[4] Input State Inversion
[5] Input Configure
[6] Protocol settings
[7] Set Default Settings
[8] Firmware Upgrade
[9] Diagnostics screen
[0] Exit

-----

Current Baudrate is:
9600
Data bits: 8 Stop bits: 1
[1] Set 8 Data bits + 1 Stop bit
[2] Set 8 Data bits + 2 Stop bit
[3] Configure Baudrate
[4] Configure Parity
[0] Back█
```

Fig. 7.

```
COM7 - PuTTY

----- IOMOD Configure Terminal (IEC-101) V2.2.1 -----

[1] Link Address (1)
[2] Baudrate & bits(9600, 8+1) E Parity
[3] RS485 Terminating Resistor (Disabled)
[4] Input State Inversion
[5] Input Configure
[6] Protocol settings
[7] Set Default Settings
[8] Firmware Upgrade
[9] Diagnostics screen
[0] Exit

-----

Input state inversion for individual pins.
Choose option and pin for which to apply it.
NOTE: Input inversion shall be set for individual pins
where grouped inputs are being used
[3] Choose pin
[0] Back

Write input number (1-16):
```

Fig. 8.

```
COM7 - PuTTY

----- Diagnostics Screen V2.2.1 -----

Input #1 (IOA 1) state: 0-
Input #2 (IOA 2) state: 0-
Input #3 (IOA 3) state: 0-
Input #4 (IOA 4) state: 0-
Input #5 (IOA 5) state: 0-
Input #6 (IOA 6) state: 0-
Input #7 (IOA 7) state: 0-
Input #8 (IOA 8) state: 0-
Input #9 (IOA 9) state: 0-
Input #10 (IOA 10) state: 0-
Input #11 (IOA 11) state: 0-
Input #12 (IOA 12) state: 0-
Input #13 (IOA 13) state: 0-
Input #14 (IOA 14) state: 0-
Input #15 (IOA 15) state: 0-
Input #16 (IOA 16) state: 0-

[] Refresh
[9] Enter USB protocol simulator mode
[0] Back
```

Fig. 9.

## Main Menu

	Menu name	Function	Values	Default values
1.	Link Address	Setts Link address	1-255	1
2.	Baudrate, Parity and stop bits	Enters configuring screen for communication settings	8+1 or 8+2 (Data + Stop), None, Odd, Even, Mark, Space (Parity)	9600, 8+1, Parity - Even
3.	RS485 Terminating Resistor	RS485 120 Ohms Terminating Resistor	0 - 1 (off/on)	0

4.	Input state inversion	Input inversion (Inverts input states in protocol logic)	0 - 1 (off/on)	0 (not inverted)
5.	Input configure	Enters screen for configuring (see 5.1 – 5.2 rows below)	-	-
5.1	Input grouping;	Groups or ungroups inputs	16 inputs ungrouped / 8 pairs grouped	All inputs ungrouped by default
5.2	Input filter time;	Input glitch filter – minimum stable time to detect input	1 – 60000 milliseconds	100
6.	Protocol settings	Enters screen for protocol settings (see rows 6.1 - 6.2)	-	-
6.1	Toggle 24/56 bit time	Time mode for info objects	24/56	56
6.2	Change IOA size	IOA size	1-3	1
7.	Set Default Settings	Sets Default Settings	(1 to confirm, 0 to cancel)	-
8.	Firmware Upgrade	Mass Storage Device Firmware Upgrade	(1 to confirm, 0 to cancel)	-
9.	Diagnostics	Input states	-	-
0.	Exit	Exit and disconnect	-	-

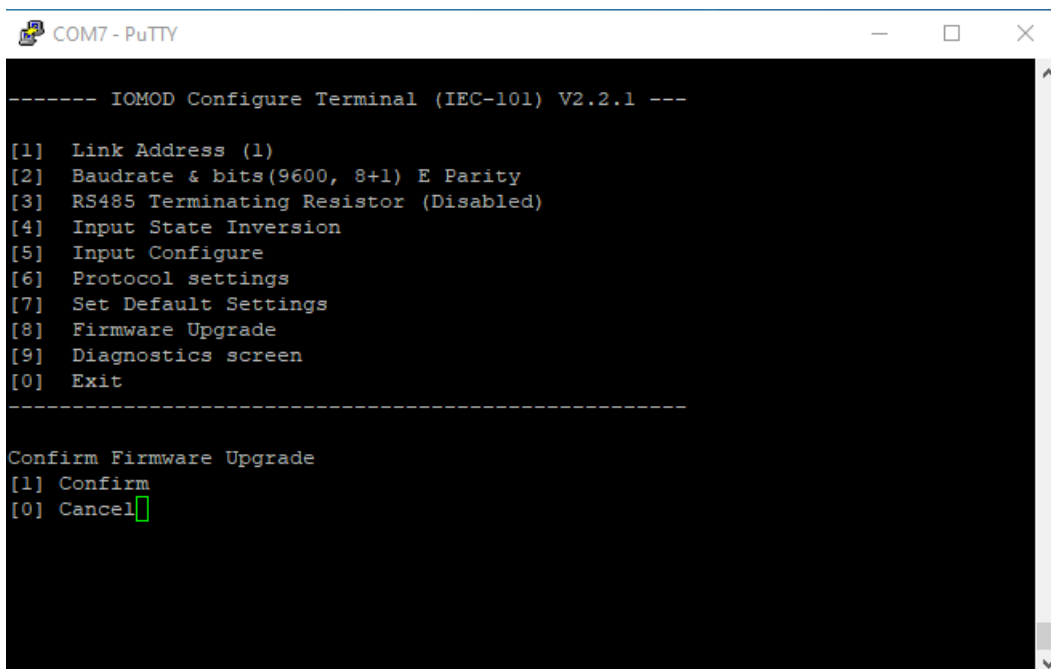
## Protocol simulator

When entered diagnostics screen, user can turn on protocol simulator by pressing [9]. When protocol simulator is turned on, device will communicate through USB port rather than RS-485 line. Communication on RS-485 line is closed and all IEC-101 commands will be accepted only from USB. To exit this mode user must restart device.

## Firmware upgrade over USB

To update device firmware user must enter main configuration menu.  
Enter Firmware update screen by pressing [8];  
Confirm update by pressing [1];  
Device now enters Firmware Upgrade mode.

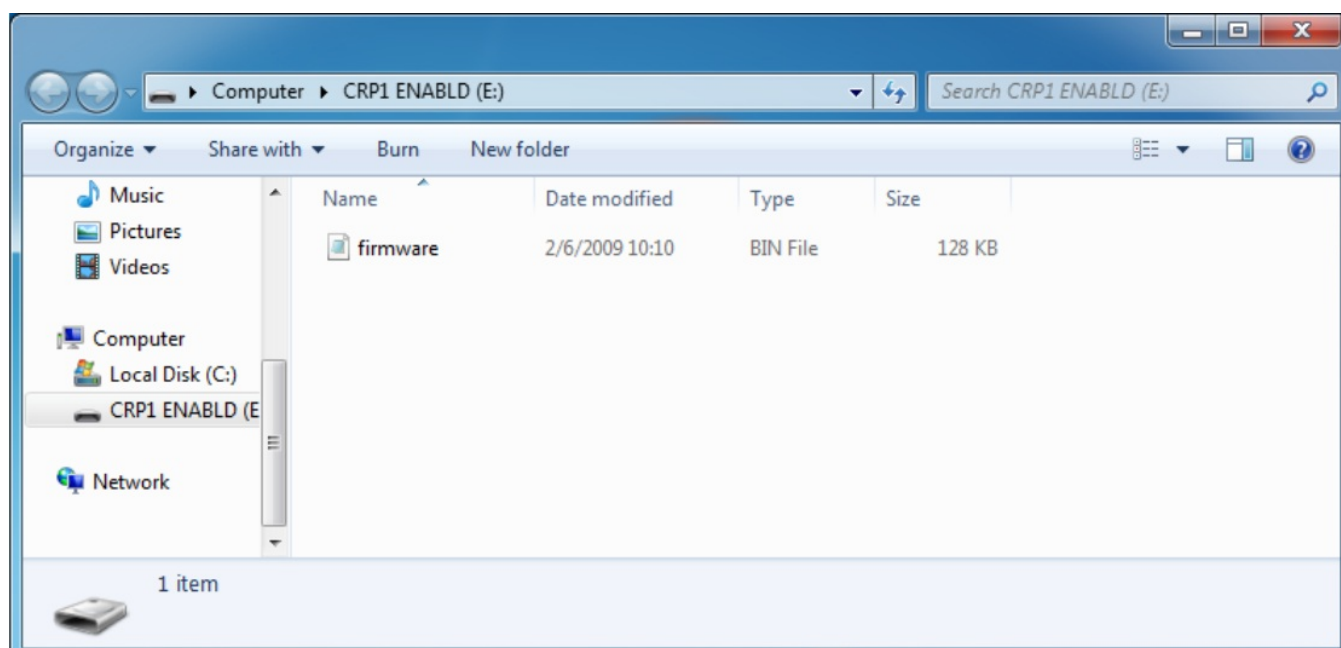




Device reconnects as mass storage device:



User then must delete existing file "firmware.bin", and simply drag and drop new firmware file.



Reconnect device, set default settings and check firmware version in Diagnostics screen.