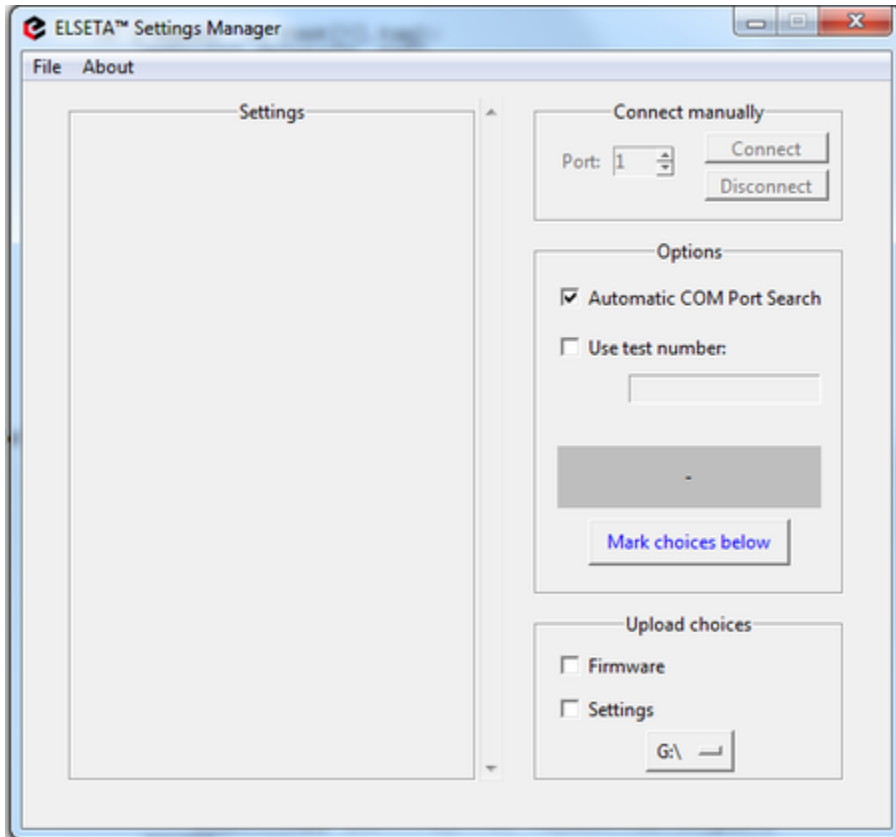


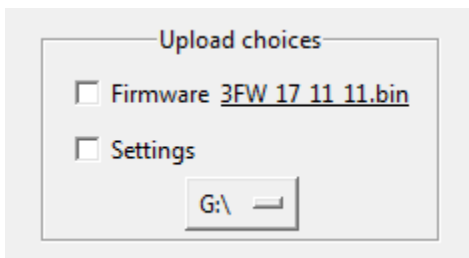
Using Elseta Upload Utility for MV Beacon

To upload firmware to MV Beacon successfully, you should follow instructions mentioned afterwards. If **any** of these instructions doesn't execute properly, please contact a developer for further questions.

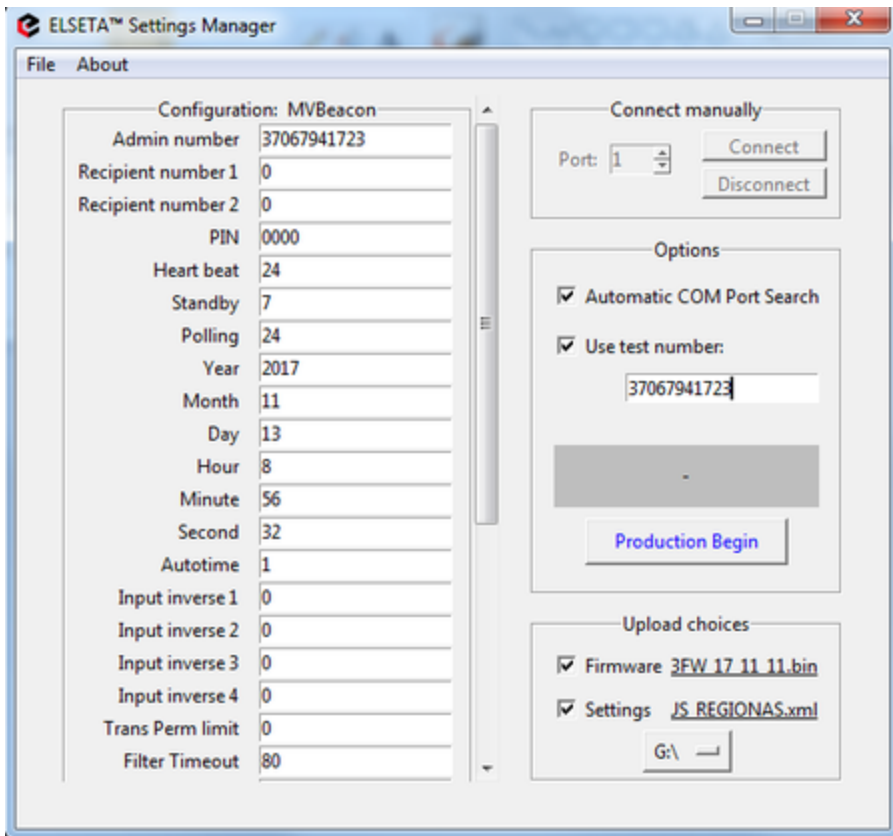
1. Download *Upload Utility*. To download press this link: [MVBeacon_Upload_Utility0_3.zip](#)
2. When extracted, press .exe file found in folder. First screen should look like this:



3. To choose firmware, press *FileChoose Firmware* and choose correct .bin file for upload. Note: you should always use newest available firmware to get the best performance out of device. There is a date shown in firmware version or a version itself. After confirming the use of file you should see a shortened name written in *Upload choices* tab at right bottom:



4. To choose proper configuration file, press *File Open Configuration* and choose a correct .xml file. Most of the configurations are already in folder. If none of them are applicable to your needs, please contact any of the people who were/are developing this product. After confirming the use of file, you should see a shortened name written in *Upload choices* tab at right bottom as well as editable options appearing on the left:



5. To upload any of aforementioned files, you must check needed checkbox (or checkboxes). If no checkbox is selected, uploading can not begin.

6. If test number is being used (for example, for device testing), you should check the checkbox *Use test number* and write a test number. If checkbox is unchecked, default number from uploaded .xml file is used.

7. *Automatic COM port search* option is available. If this checkbox is not checked, you should choose the needed COM port. It is highly advised to use Automatic COM port search

8. Now upload can start. It is divided into separate pieces:

1. Press *Begin Upload*.
2. Wait until message *Waiting for Mass Device - Enter ISP mode* appears.
3. Hold *ISP Mode* button on board, press *Reset* button and then release both buttons. Error message (if any) means that you have chosen wrong disk drive. To determine the right one enter *My Computer* folder. Use the value to change disk drive to a needed one by selecting the right one from dropdown menu in *Upload Choices* tab. Press Upload again. If error doesn't occur, *Copying Firmware* message should appear.
4. After uploading firmware, if configuration upload choice is selected, upload should begin.
5. A screen asking for serial number should pop up. You should now write serial number which is given for your device or use USB HID device, such as barcode reader, to read a serial number automatically.
6. After pressing proceed or reading code with barcode reader *Waiting for VCOM* message should appear. You should press *Reset* button on PCB board and wait for following messages.
7. After uploading settings, you should get a message in green: *Success - Device Disconnected*. This means that upload has ended and you can disconnect the device.